

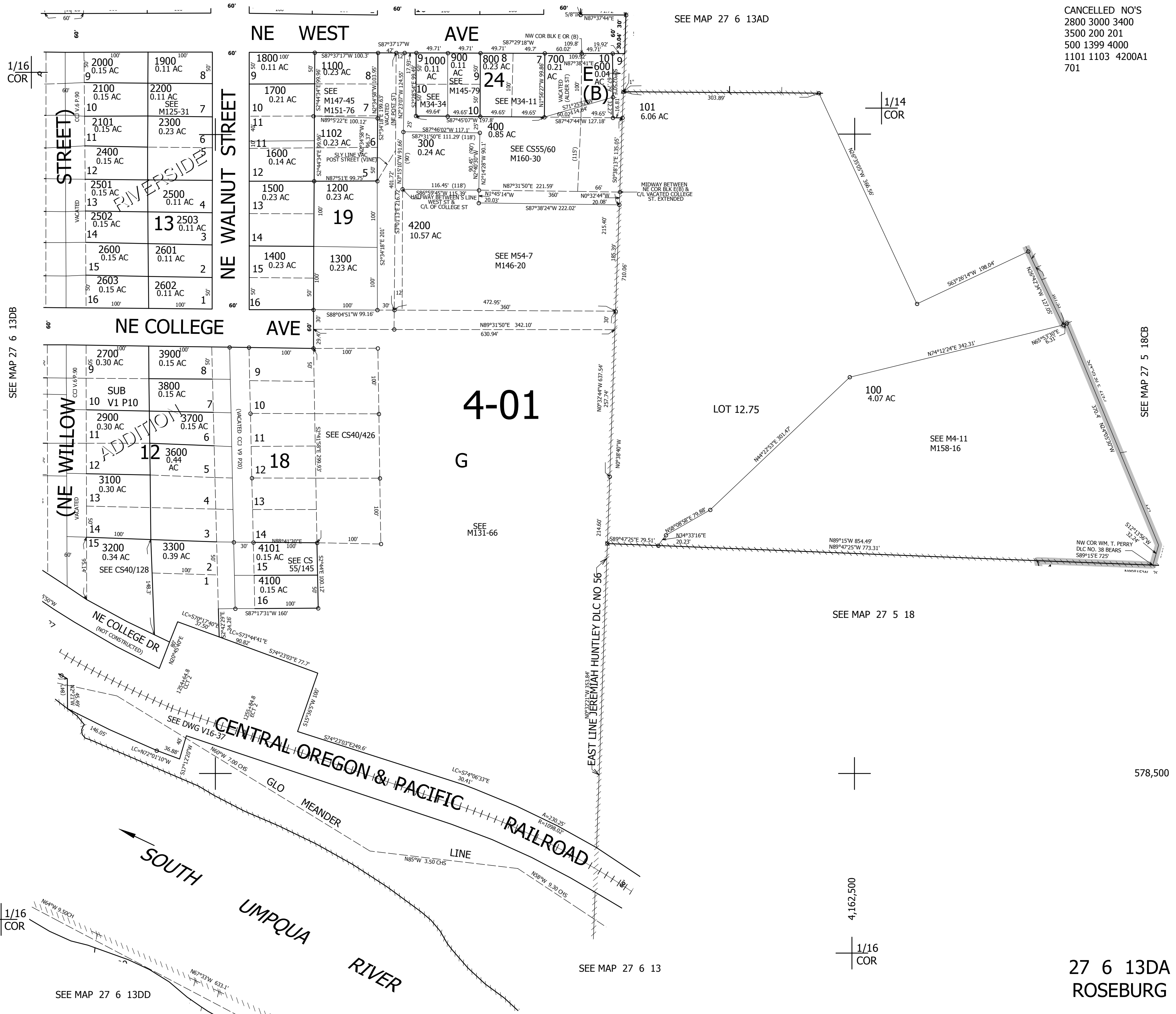
THIS MAP WAS PREPARED FOR ASSESSMENT PURPOSE ONLY.

# NE1/4 SE1/4 SEC.13 T.27S. R.6W. W.M. DOUGLAS COUNTY

REVISED ON 2-19-19

## 27 6 13DA ROSEBURG

1" = 100'



SEE MAP 27 6 13AD

CANCELLED NO'S  
 2800 3000 3400  
 3500 200 201  
 500 1399 4000  
 1101 1103 4200A1  
 701

SEE MAP 27 6 13DB

SEE MAP 27 5 18CB

SEE MAP 27 5 18

578,500

SEE MAP 27 6 13

SEE MAP 27 6 13DD

## 27 6 13DA ROSEBURG