

THIS MAP WAS PREPARED FOR ASSESSMENT PURPOSE ONLY.

Upper Left:
123°21'46"W 43°13'5"N
4158368E 578406N ft

SE1/4 SW1/4 SEC.13 T.27S. R.06W. W.M.
DOUGLAS COUNTY
1" = 100'

Date Exported 2026-02-23

270613CD
Roseburg

CANCELLED NOS:
2600 8000 800
2800 900 2900
1000 4900 1100
2700A1 1200 1500
1600 3000 3100
3200 1302 2600A1
6300 7700A2 7700A1
7700A3 7700A4 2100A1
2100A2 2100A3 1700
1800 1900 2000
2200 1700 1800
1900 2000 2200
1307 2201 7500
7701 9100 7200

PARCEL 2300
1. N0°26'29"E 94.49'
2. N89°19'17"W 31.71'
3. N0°33'17"E 6.58'
4. N89°19'17"W 24'
5. S0°31'17"W 9.63'
6. S89°28'44"E 5.77'
7. S0°36'43"W 89.59'
8. A= 50.24'
R= 2909.79'
LC= S87°11'14"E 50.24'

1/16 COR

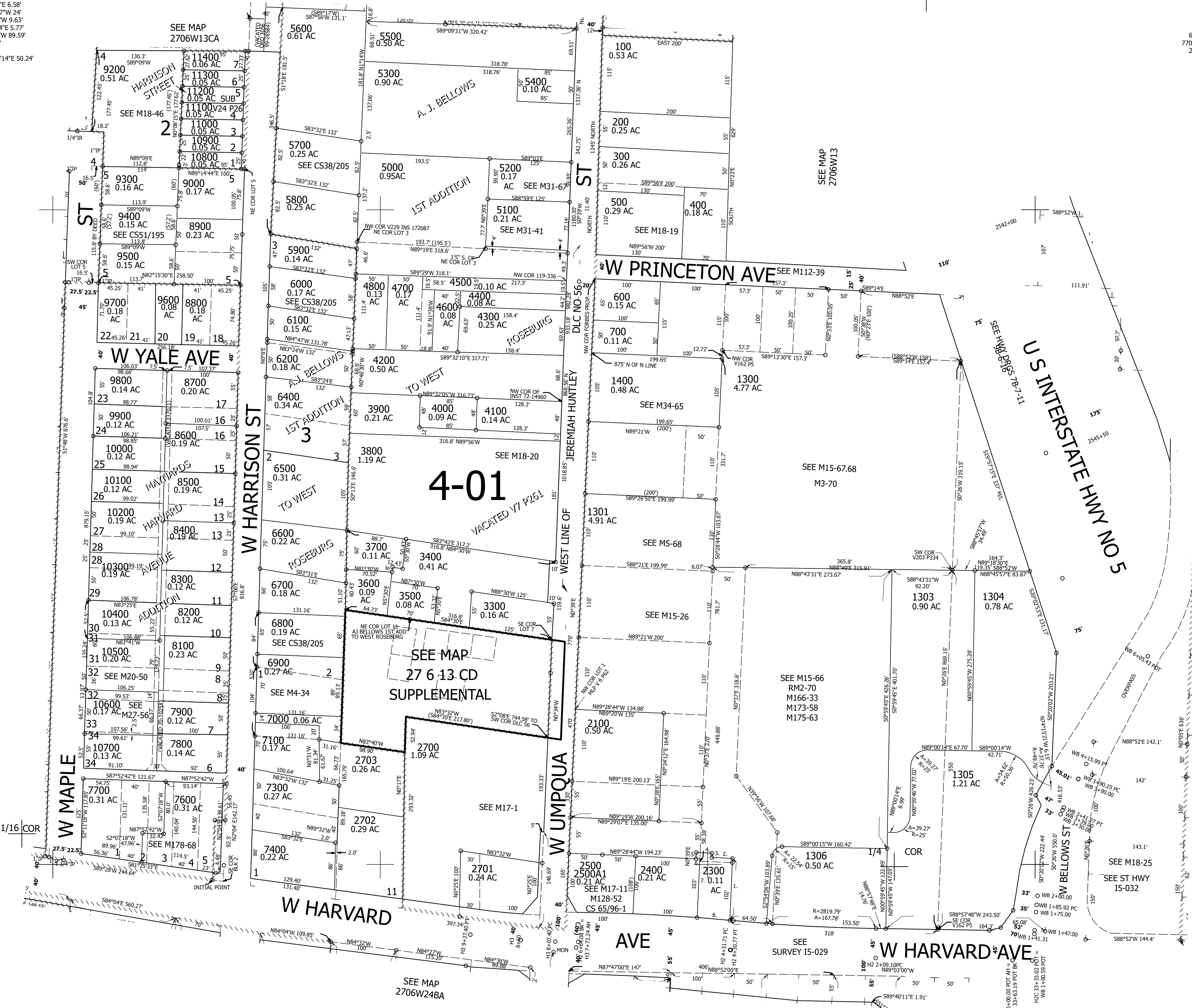
SEE MAP
2706W13CC

SEE MAP
2706W13

SEE MAP
2706M13DC

SEE MAP
2706W24AB

SEE MAP
2706W24BA



Lower Right:
123°21'18"W 43°12'48"N
4160340E 576667N ft

270613CD
Roseburg

