

THIS MAP WAS PREPARED FOR ASSESSMENT PURPOSE ONLY.

SW1/4 SW1/4 SEC.13 T.27S. R.6W. W.M. DOUGLAS COUNTY

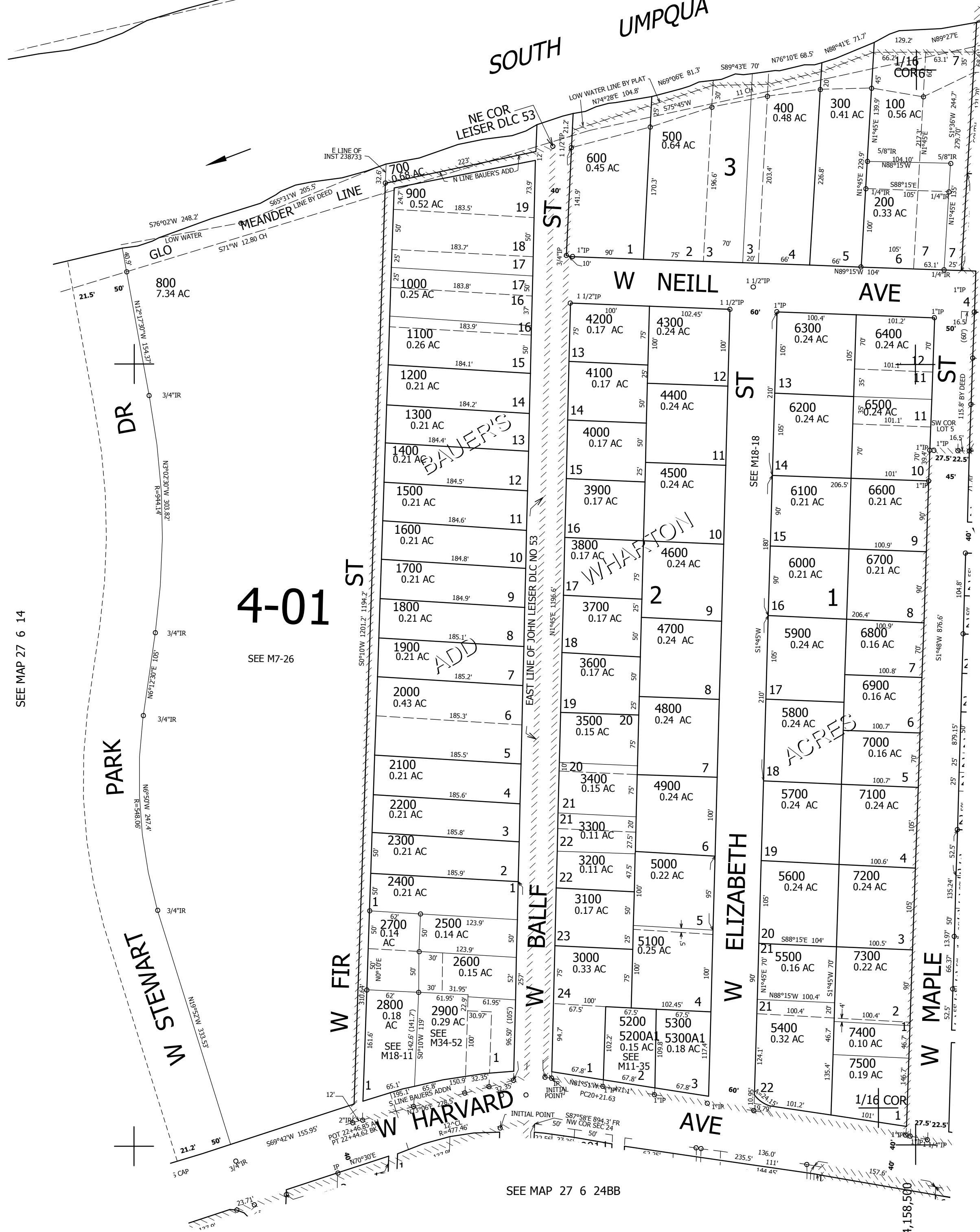
REVISED ON 9-26-16

27 6 13CC ROSEBURG

1" = 100'

1/16 COR

SEE MAP 27 6 13



CANCELLED NO'S 800A1

SEE MAP 27 6 14

4-01 ST

SEE M7-26

SEE MAP 27 6 24BB

SEE MAP 27 6 13CD

14 13
23 24

577,000

27 6 13CC ROSEBURG