

THIS MAP WAS PREPARED FOR ASSESSMENT PURPOSE ONLY.

Upper Left:  
123°21'46"W 43°13'37"N  
4158476E 581675N ft

SE1/4 NW1/4 SEC.13 T.27S. R.06W. W.M.  
DOUGLAS COUNTY  
1" = 100'

Date Exported 2026-03-23

270613BD  
Roseburg

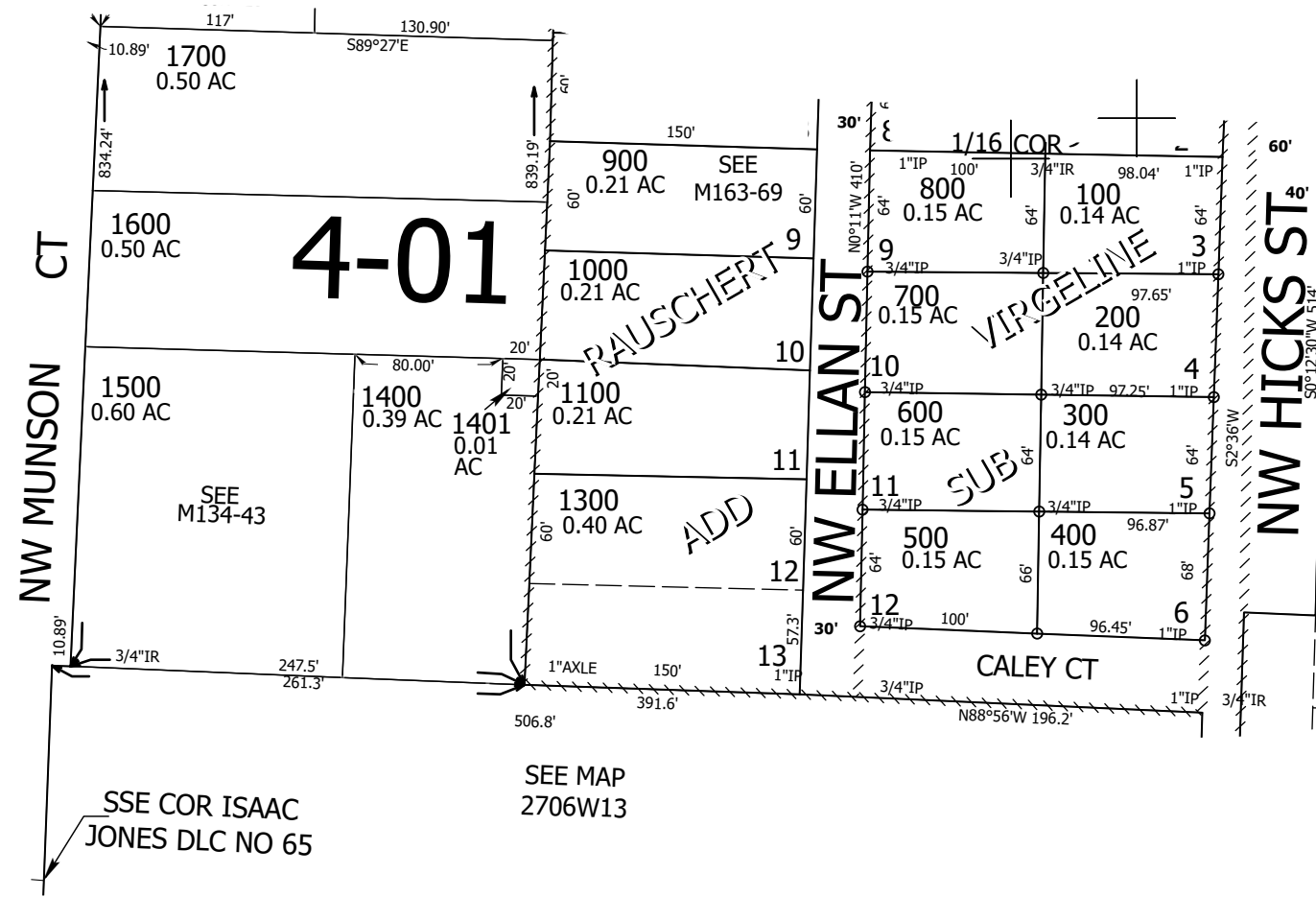
CANCELLED NOS:  
1200

1/16 COR

SEE MAP  
2706W13BA

SEE MAP  
2706W13AB

US INTERSTATE HWY NO 5



SSE COR ISAAC  
JONES DLC NO 65

SEE MAP  
2706W13

SEE MAP  
2706W13AC

270613BD  
Roseburg

Lower Right:  
123°21'18"W 43°13'21"N  
4160454E 579955N ft