

THIS MAP WAS PREPARED FOR ASSESSMENT PURPOSE ONLY.

Upper Left:
123°21'10"W 43°13'32"N
4161083E 581107N ft

SE1/4 NE1/4 SEC.13 T.27S. R.06W. W.M.
DOUGLAS COUNTY
1" = 100'

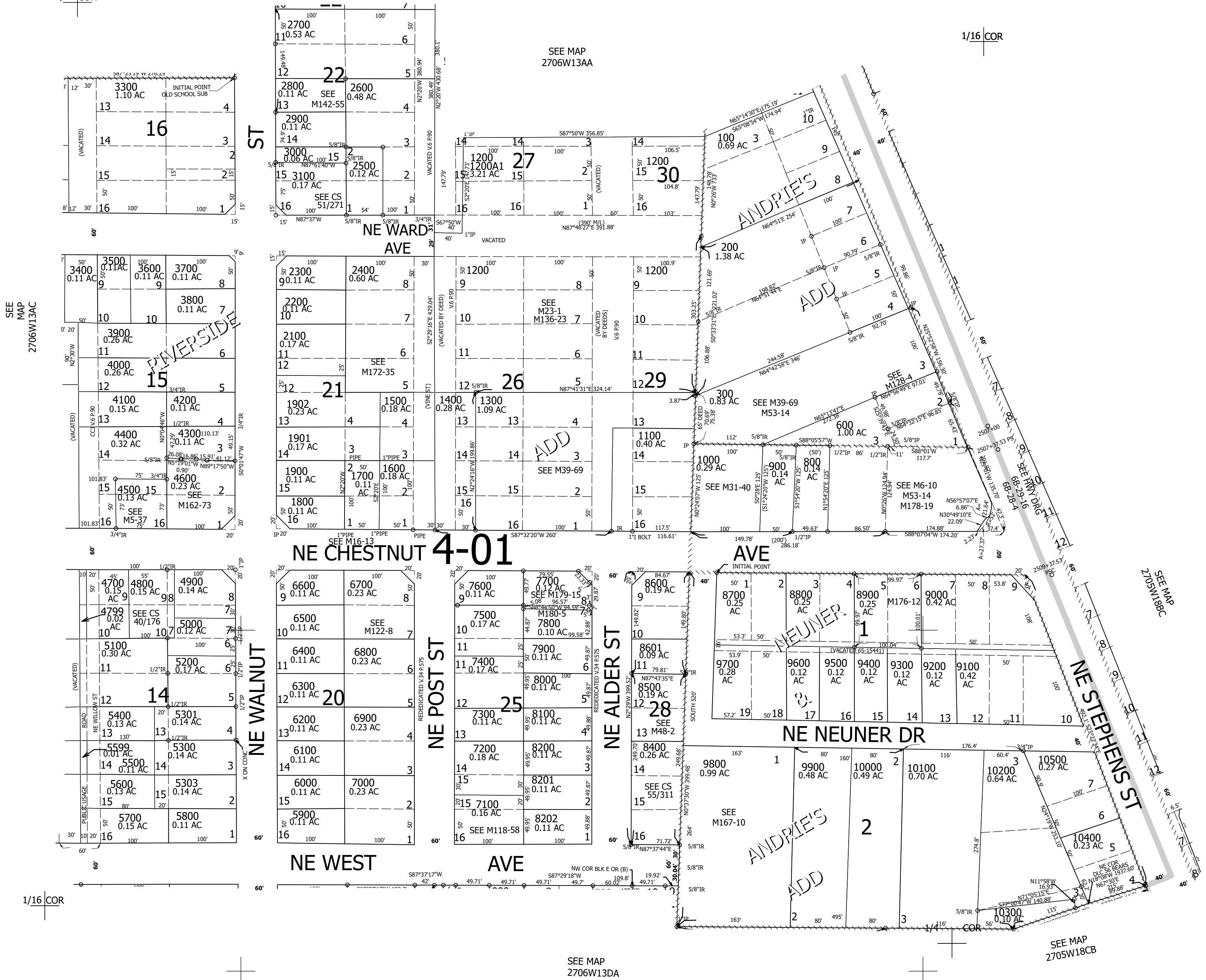
Date Exported 2025-10-28

270613AD
Roseburg

CANCELLED NOS:
8300 3200 5302
1300A1 2000 2001
1300A1 7801 400
500 700 7300A1
7301

1/16 COR

1/16 COR



SEE MAP
2706W13DA

SEE MAP
2705W18CB

270613AD
Roseburg

Lower Right:
123°20'43"W 43°13'16"N
4163055E 579368N ft