

THIS MAP WAS PREPARED FOR ASSESSMENT PURPOSE ONLY.

Upper Left:
123°21'30"W 43°13'46"N
4159639E 582573N ft

NW1/4 NE1/4 SEC.13 T.27S. R.06W. W.M.
SEE MAP DOUGLAS COUNTY
2706W12DC 1" = 100'

Date Exported 2026-04-30

270613AB
Roseburg

CANCELLED NOS:
100 7500 7400
7501 5000 7300
5100 5200 5300
5400 7200M1 4001
4301 3802 8100A1
8100A2 7100 6901
8100A3 8100A4 103A1

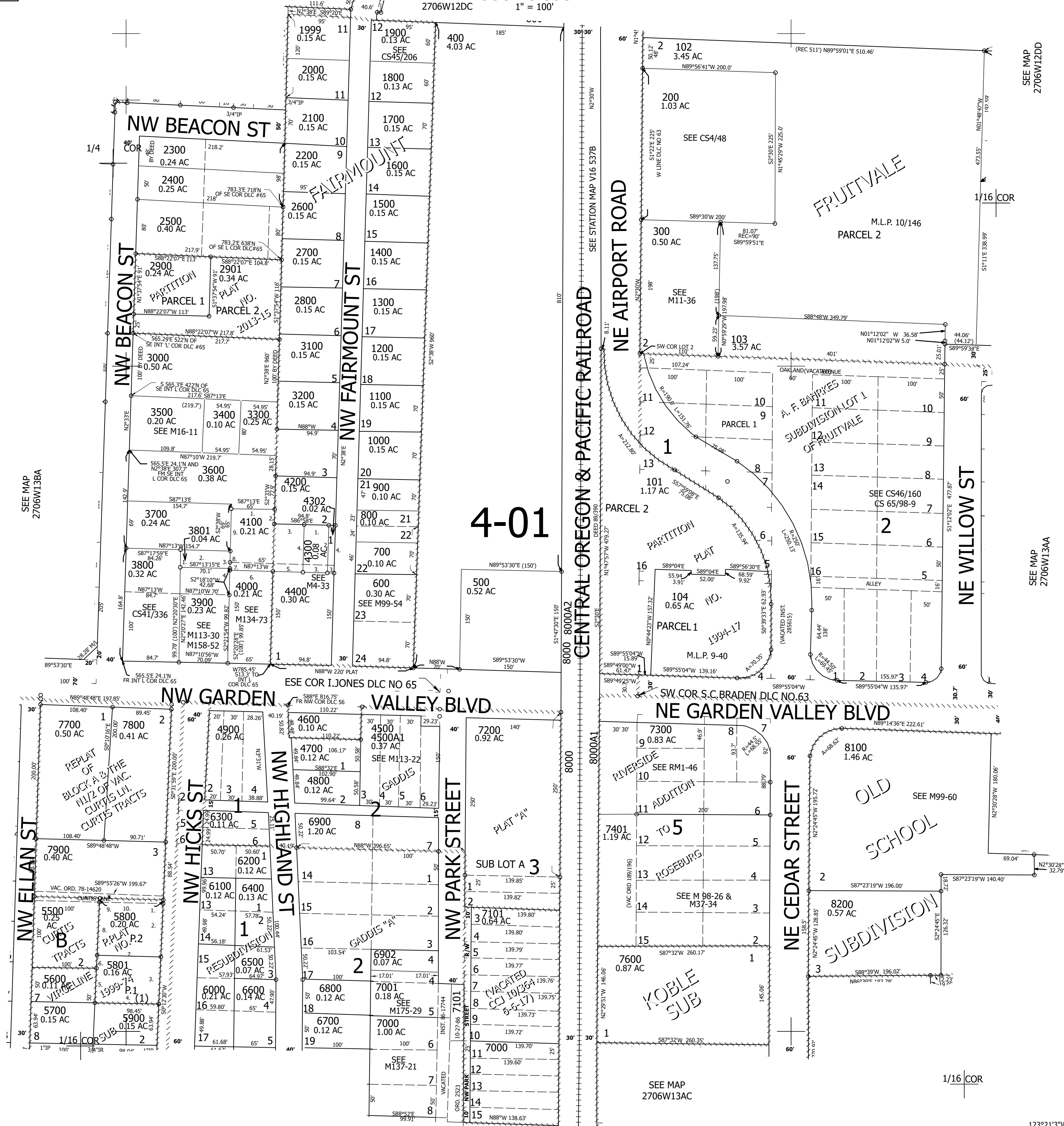
- PP 1999-74
- 1. S0°17'19"W 6'
- 2. S0°17'19"W 79.67'
- 3. S0°17'19"W 70'
- 4. S89°46'33"W 98.46'
- 5. N0°11'24"W 50.09'
- 6. N0°11'24"W 19.91'
- 7. N89°46'40"W 99.05'
- 8. N0°11'24"W 79.82'
- 9. N0°08'11"W 6'
- 10. N89°51'48"E 99.76'

- PARCEL 4302
- 1. N87°19'48"W 10'
- 2. S2°38'W 70'
- 3. S87°19'48"E 10'
- 4. N2°38'E 70'

- PARCEL 4300
- 1. S87°01'14"E 65.24'
- 2. S2°38'W 19.96'
- 3. S87°19'48"E 45'
- 4. S2°38'W 70'

- PARCEL 4100
- 1. S87°01'14"E 65.24'
- 2. S2°38'W 19.96'
- 3. S87°19'48"E 45'
- 4. S2°38'W 70'
- 5. N87°19'48"W 45'
- 6. N86°59'06"W 65.18'
- 7. N2°18'10"E 10'
- 8. N2°16'25"E 14.99'
- 9. N2°42'46"E 64.93'

- PARCEL 3801
- 1. N2°20'27"E 22.17'
- 2. S87°18'59"E 70.08'
- 3. S2°42'46"E 22.29'
- 4. S2°18'10"W 2.74'



SEE MAP
2706W13BA

SEE MAP
2706W12DD

SEE MAP
2706W13AA

SEE MAP
2706W13AC

1/16 COR

270613AB
Roseburg

Lower Right:
123°21'3"W 43°13'30"N
4161611E 580834N ft