

THIS MAP WAS PREPARED FOR ASSESSMENT PURPOSE ONLY.

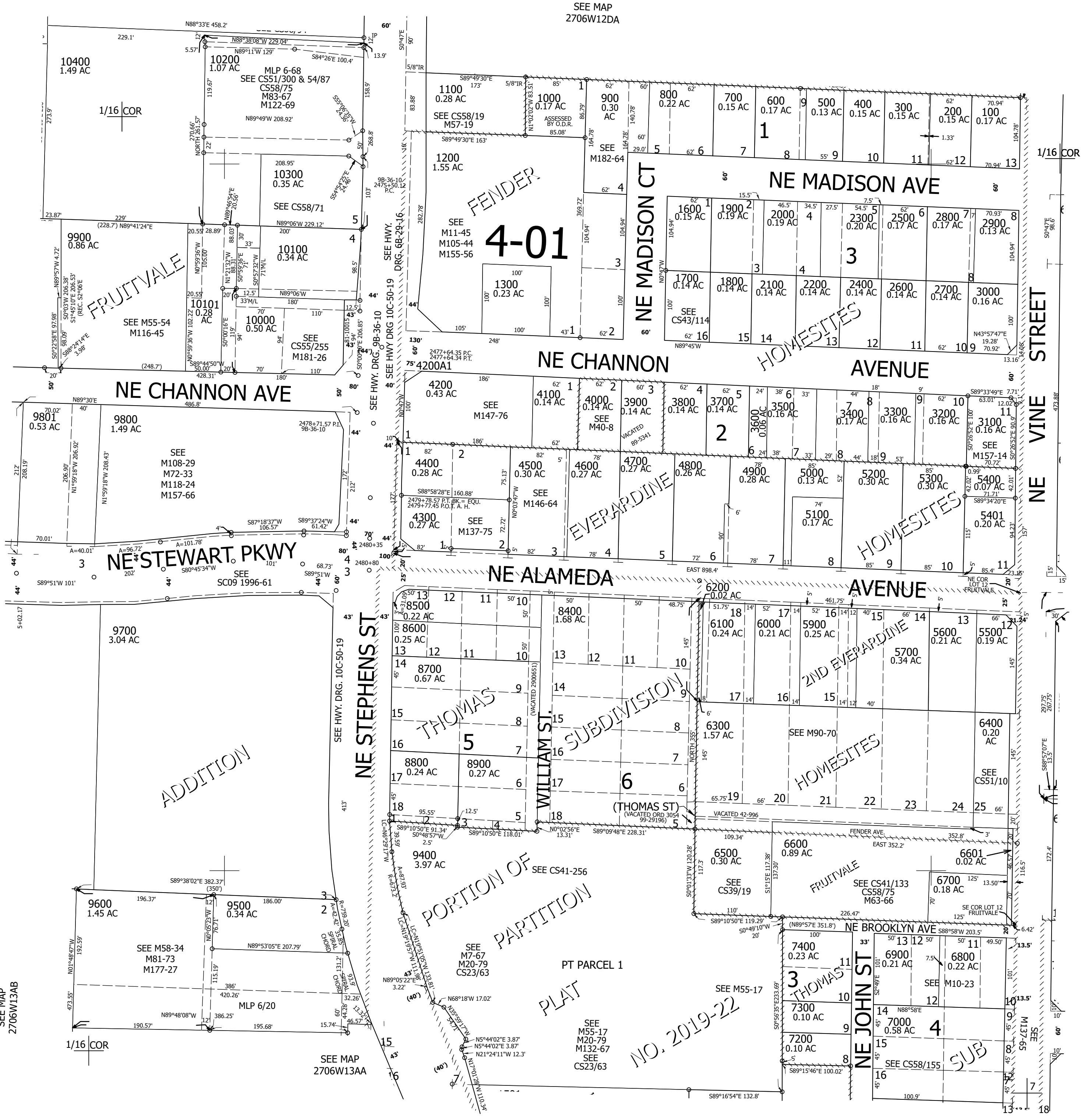
Upper Left:
123°21'13"W 43°13'59"N
4160957E 583822N ft

SE1/4 SE1/4 SEC.12 T.27S. R.06W. W.M.
DOUGLAS COUNTY
1" = 100'

Date Exported 2025-07-08

270612DD
Roseburg

CANCELLED NOS:
801 10102 8000
201 9199 9300
10001 1400 1500
10201 7500 7600
7700 7800 7900
8100 8200 8300
8301 9000 9100
9200 6701 5800
10103 4402 4301
7000A1 7100 9501
9601 9802 9902
9901



SEE MAP
2706W12DC

SEE MAP
2706W13AB

SEE MAP
2706W13AA

SEE MAP
2705W07CC

270612DD
Roseburg

Lower Right:
123°20'46"W 43°13'42"N
4162932E 582043N ft