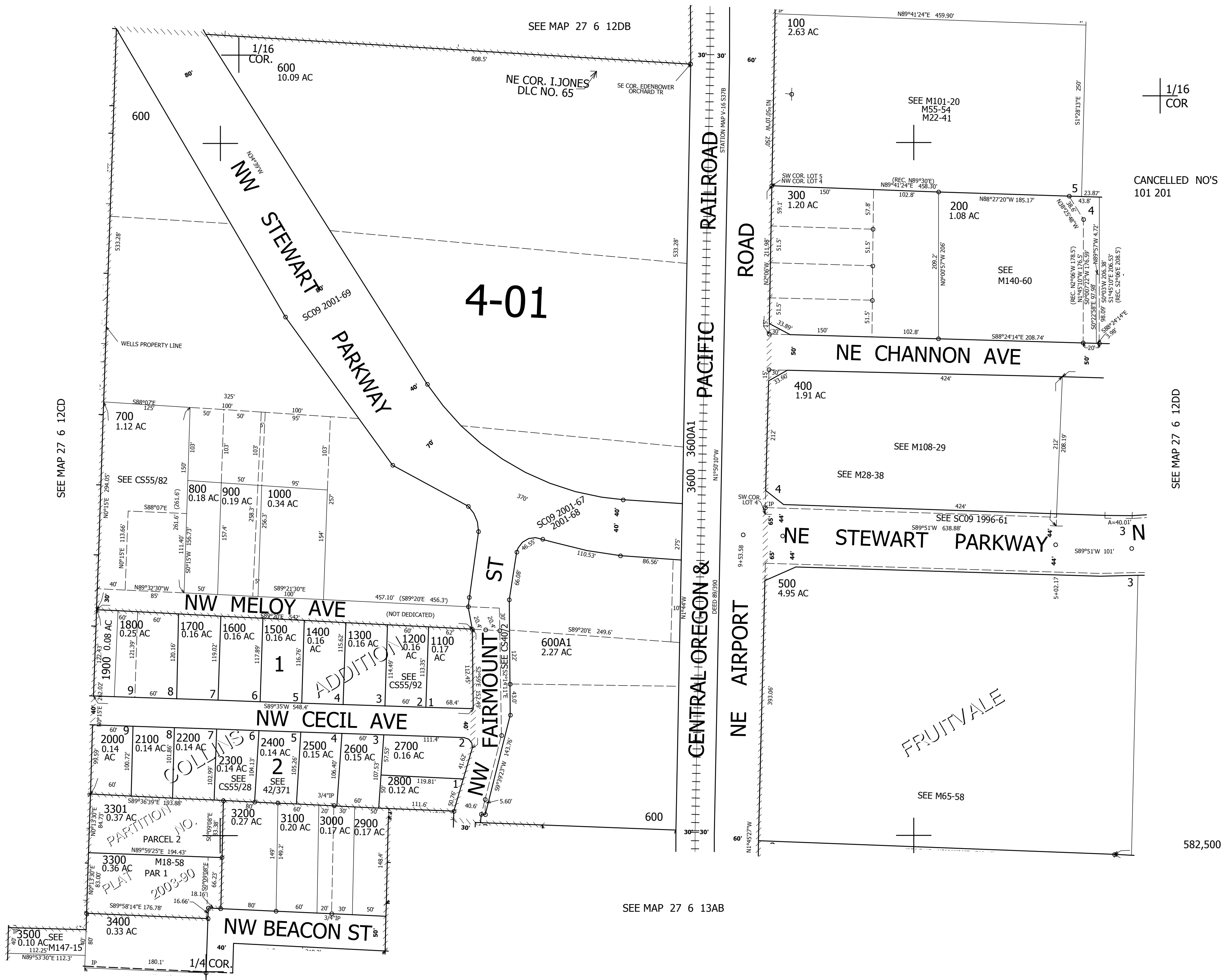


THIS MAP WAS PREPARED FOR ASSESSMENT PURPOSE ONLY.

SW1/4 SE1/4 SEC.12 T.27S. R.6W. W.M. DOUGLAS COUNTY 1" = 100'

REVISED ON 2-20-19

27 6 12DC ROSEBURG



1/16 COR

CANCELLED NO'S 101 201

SEE MAP 27 6 12DD

582,500

1/16 COR

27 6 12DC ROSEBURG

4,161,000