

THIS MAP WAS PREPARED FOR ASSESSMENT PURPOSE ONLY.

Upper Left:
123°21'50"W 43°13'59"N
4158236E 583900N ft

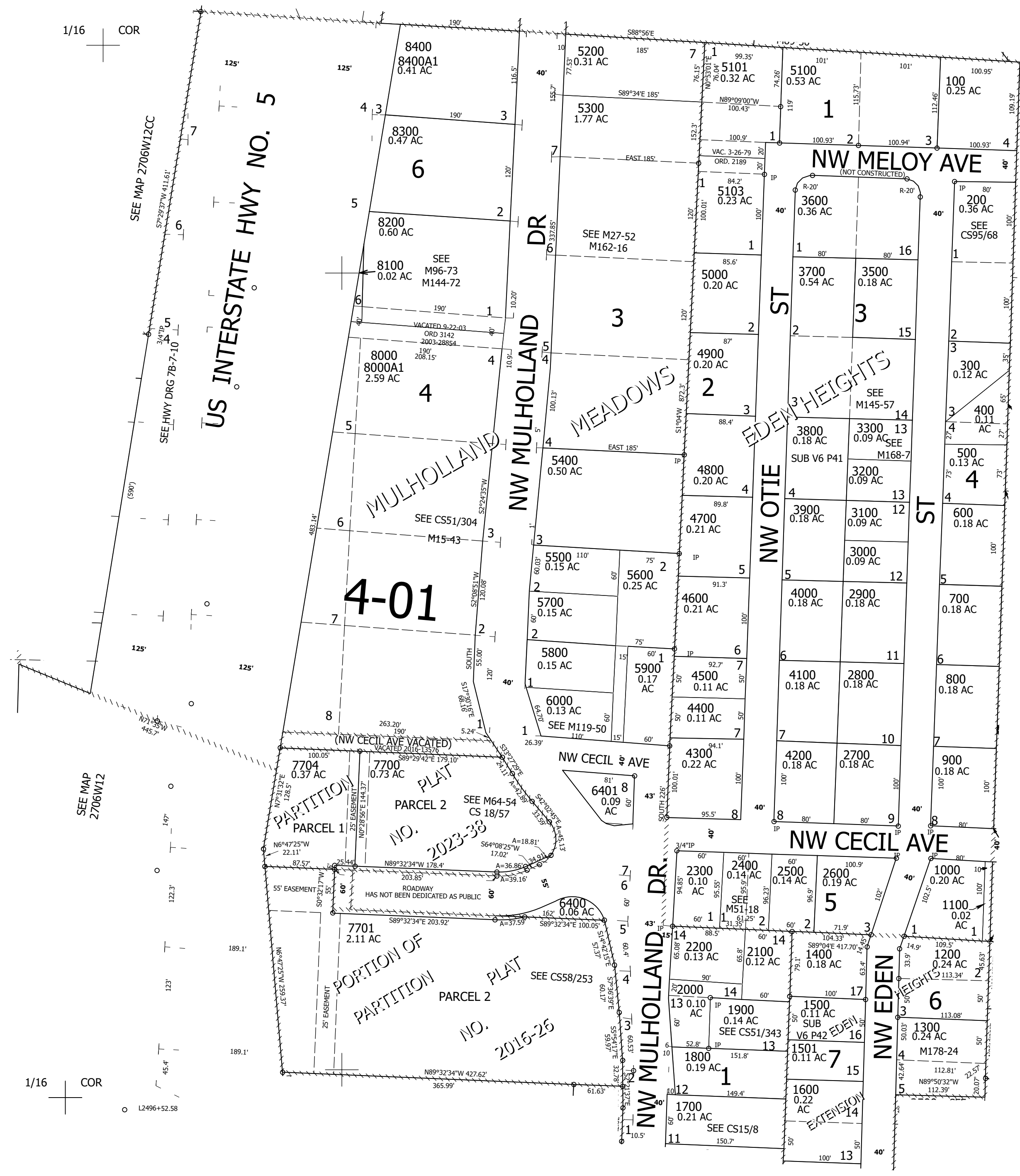
SE1/4 SW1/4 SEC.12 T.27S. R.06W. W.M.
DOUGLAS COUNTY
1" = 100'

Date Exported 2024-06-17

270612CD
Roseburg

CANCELLED NOS:
6300 8500 8500A1
6402 3400 5102
6301 6600 6700
6800 7000 7100
7200 7300 7400
7500 7600 7800
7900 7702 7703
6901 6500 8300A1
6900

SEE MAP
2706W12C



1/16 COR

1/16 COR

1/16 COR

1/4 COR

SEE MAP
2706W13

SEE MAP 2706W13BA

SEE MAP
2706W12D

270612CD
Roseburg

Lower Right:
123°21'23"W 43°13'42"N
4160198E 582110N ft