

THIS MAP WAS PREPARED FOR ASSESSMENT PURPOSE ONLY.

SW1/4 SW1/4 SEC.12 T.27S. R.6W. W.M.
DOUGLAS COUNTY

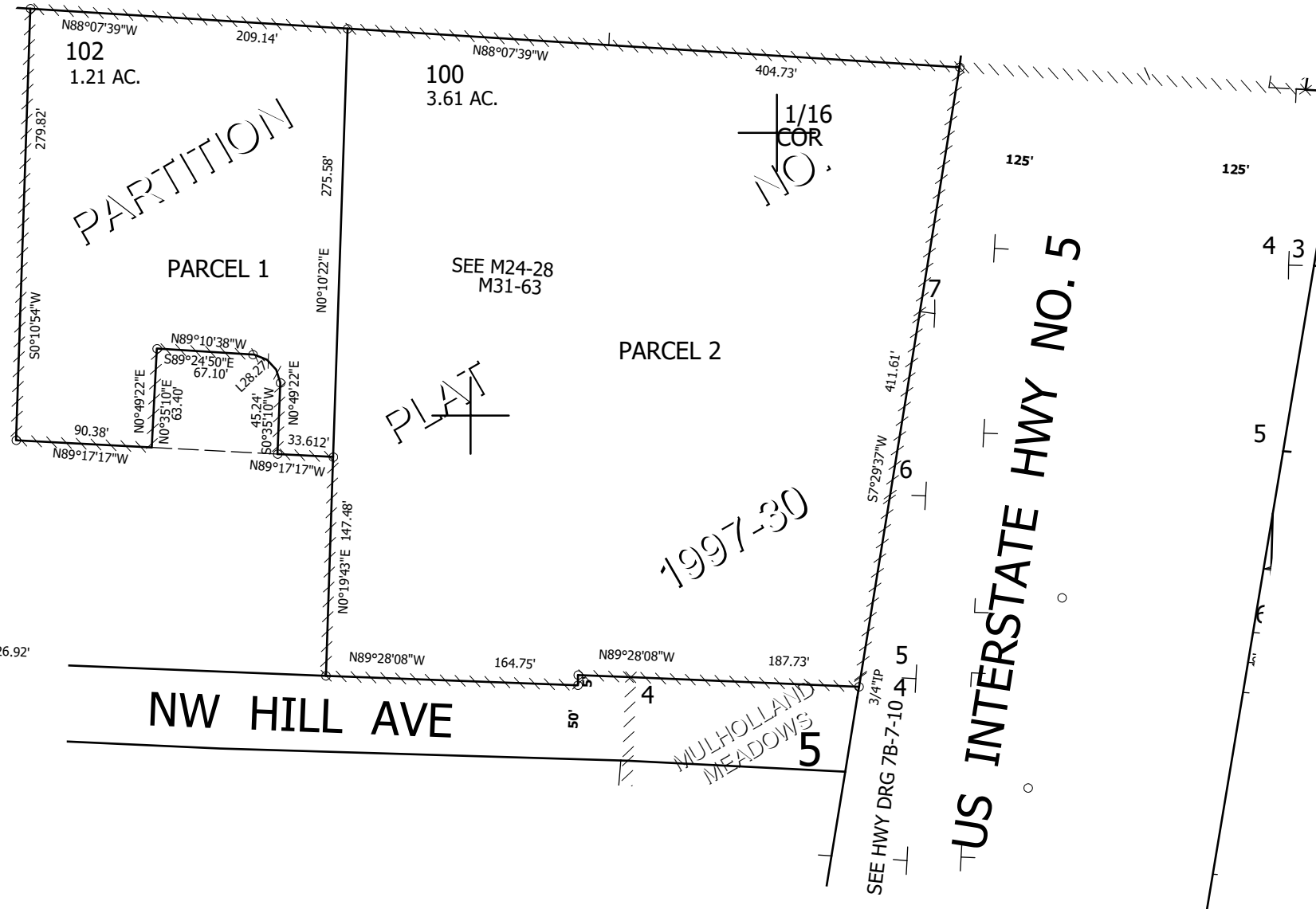
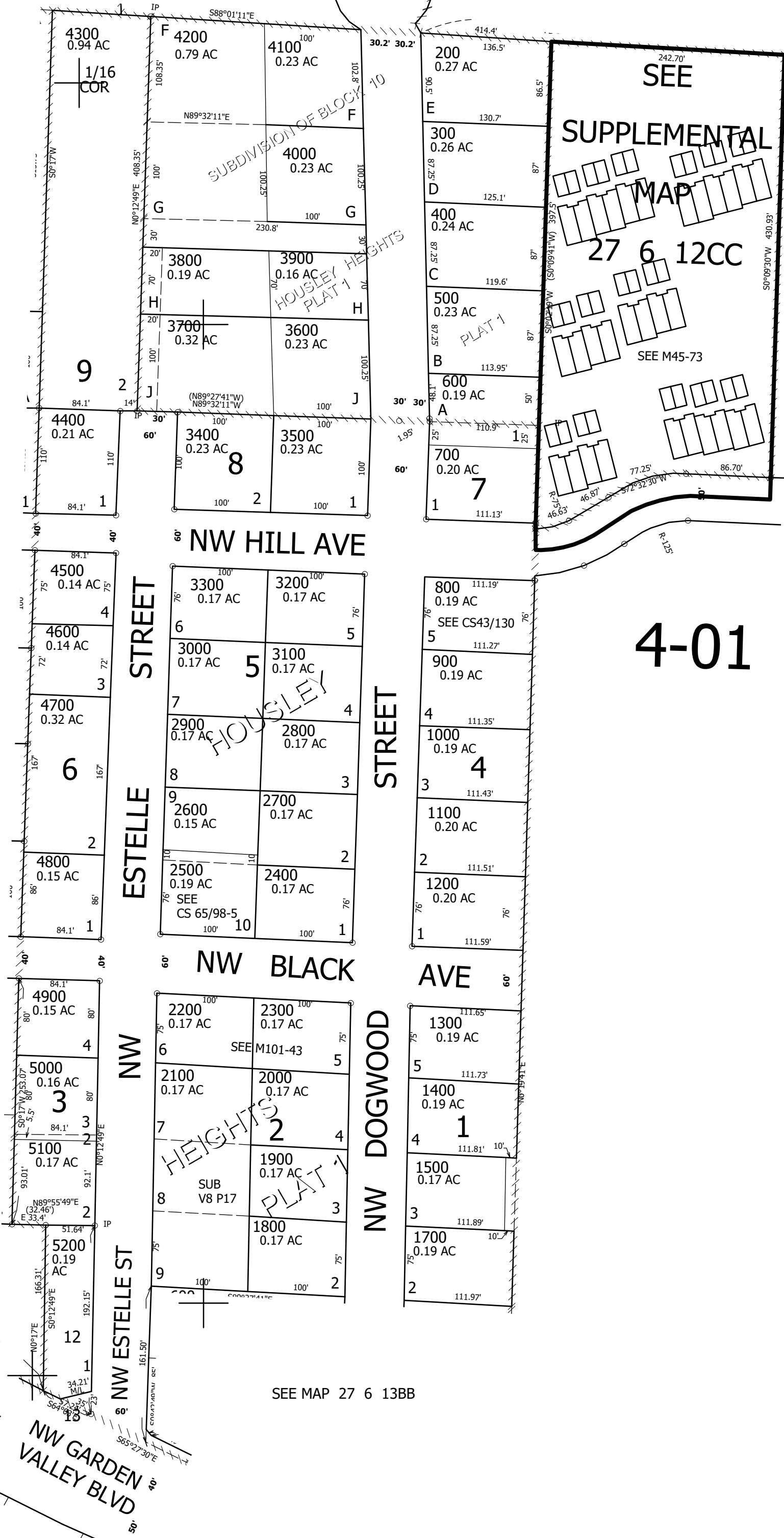
1" = 100'

REVISED ON
2-20-19

27 6 12CC
& INDEX
ROSEBURG

SEE MAP 27 6 12

CANCELLED NO'S
101 1600



SEE MAP 27 6 11DD

SEE MAP 27 6 12

SEE MAP 27 6 12CC

4-01

SEE MAP 27 6 13BB

582,500

4,158,500

27 6 12CC
& INDEX
ROSEBURG

