

THIS MAP WAS PREPARED FOR ASSESSMENT PURPOSE ONLY.

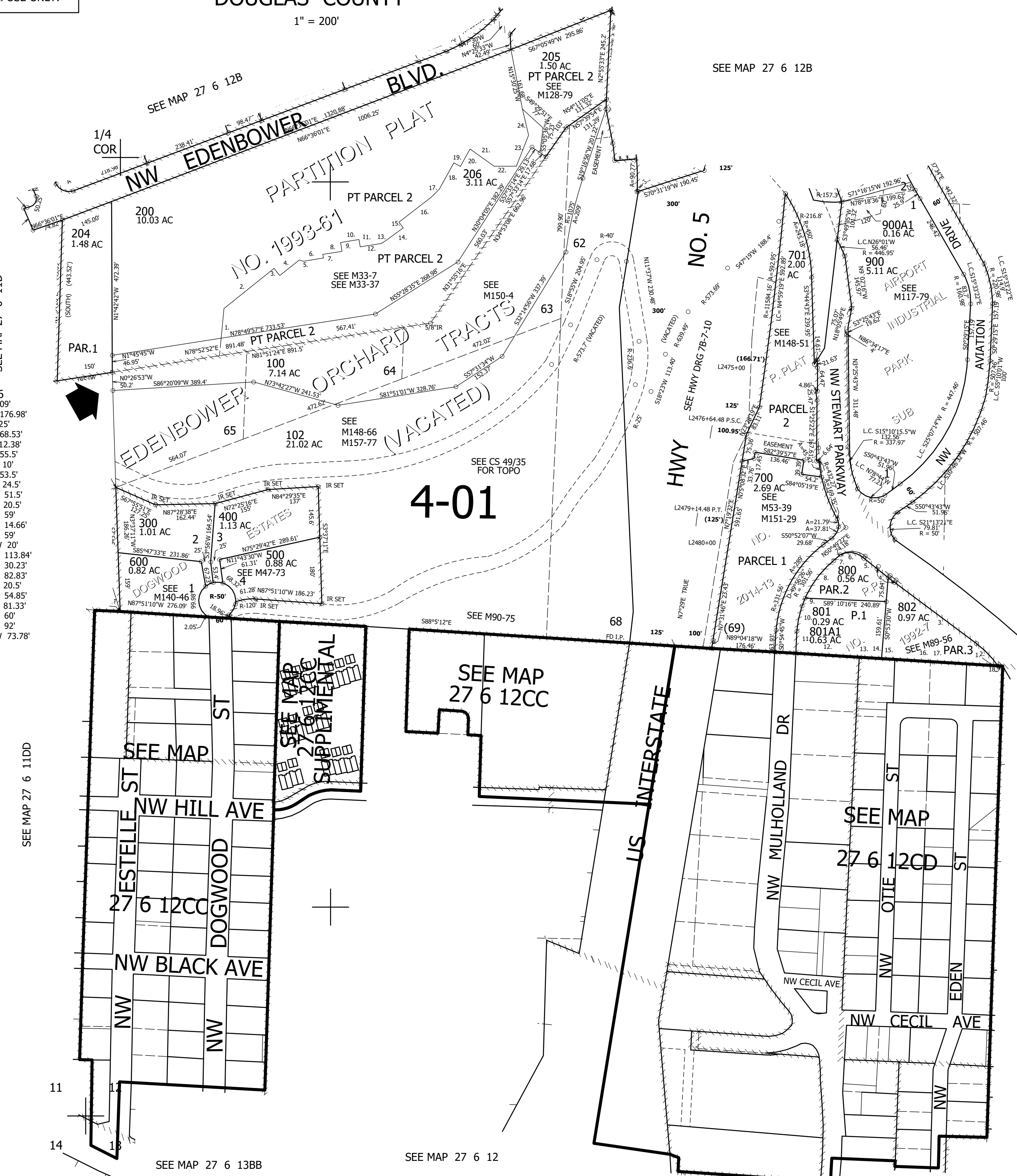
SW1/4 SEC.12 T.27S. R.6W. W.M. DOUGLAS COUNTY

1" = 200'

REVISED ON 2-20-19

27 6 12C & INDEX ROSEBURG

- PARCEL 206
- N3°20'06"E 109'
  - N49°19'46"E 176.98'
  - S40°25'32"E 25'
  - N49°34'28"E 68.53'
  - S77°25'10"E 12.38'
  - N78°45'17"E 55.5'
  - N11°14'43"W 10'
  - N78°45'17"E 53.5'
  - N11°14'43"W 24.5'
  - N78°45'17"E 51.5'
  - S11°14'43"E 20.5'
  - N78°45'17"E 59'
  - N55°13'41"E 14.66'
  - N50°24'22"E 59'
  - N39°35'39"W 20'
  - N50°24'22"E 113.84'
  - N42°17'52"E 30.23'
  - N27°00'38"E 82.83'
  - S62°59'22"E 20.5'
  - N27°01'46"E 54.85'
  - S56°30'25"E 81.33'
  - N85°29'35"E 60'
  - N19°29'35"E 92'
  - N15°30'25"W 73.78'



CEN SEC

- CANCELLED NO'S
- 201 700A1 202
  - 203 803 207
  - 208 1000 1000A1
  - 103 101 104
  - 105

- PP 1992-7
- S88°01'03"E 22.71'
  - LC=S47°43'50"E 90.68'
  - N55°26'25"W 314.79'
  - N55°44'03"W 58.85'
  - LC=S51°52'28"E 47.74'
  - LC=N86°14'04"W 61.96'
  - S50°48'26"W 31.02'
  - LC=N36°05'30"E 138.01'
  - LC=S18°42'35"W 25.22'
  - S7°58'43"W 70.95'
  - S1°23'56"W 63.49'
  - S89°08'38"E 174.64'
  - S88°05'16"E 33.39'
  - S88°00'22"E 50.01'
  - S88°00'22"E 16.01'
  - S87°53'44"E 101.06'
  - S88°01'03"E 201.75'
  - S88°01'03"E 5.37'

583,000

4,160,000

1/4 COR 27 6 12C & INDEX ROSEBURG