

THIS MAP WAS PREPARED FOR ASSESSMENT PURPOSE ONLY.

Upper Left:
123°22'14"W 43°14'39"N
4156619E 588031N ft

NW1/4 SEC.12 T.27S. R.06W. W.M.
DOUGLAS COUNTY
1" = 200'

Date Exported 2024-01-04

270612B
& INDEX
Roseburg

- PARCEL 2100 & 2102
- N25°W 25.1'
 - N51°01'32"E 6.64'
 - N47°15'40"E 72.55'
 - N39°13'57"E 19.18'
 - N77°48'37"E 103.25'
 - S83°34'35"E 84.1'
 - N51°12'54"E 94.03'
 - N19°16'45"E 30.44'
 - N49°11'35"E 37.04'
 - N0°03'39"W 118.15'

- PP 1996-7
- N82°27'28"E 51.58'
 - N77°35'49"E 100.55'
 - N77°35'49"E 2.05'
 - S8°20'23"E 51.92'
 - S0°20'31"E 47.9'
 - S8°34'51"E 61.53'
 - S22°07'11"W 17.63'

- PP 1995-52
- N3°14'04"E 57.19'
 - N30°00'47"E 4'
 - S9°29'13"E 30.31'
 - S48°08'39"E 60'
 - S86°48'24"E 30.31'
 - LC=S34°40'53"E 14.84'
A=14.84'
 - S56°56'38"W 4'
 - S88°11'W 36.5'

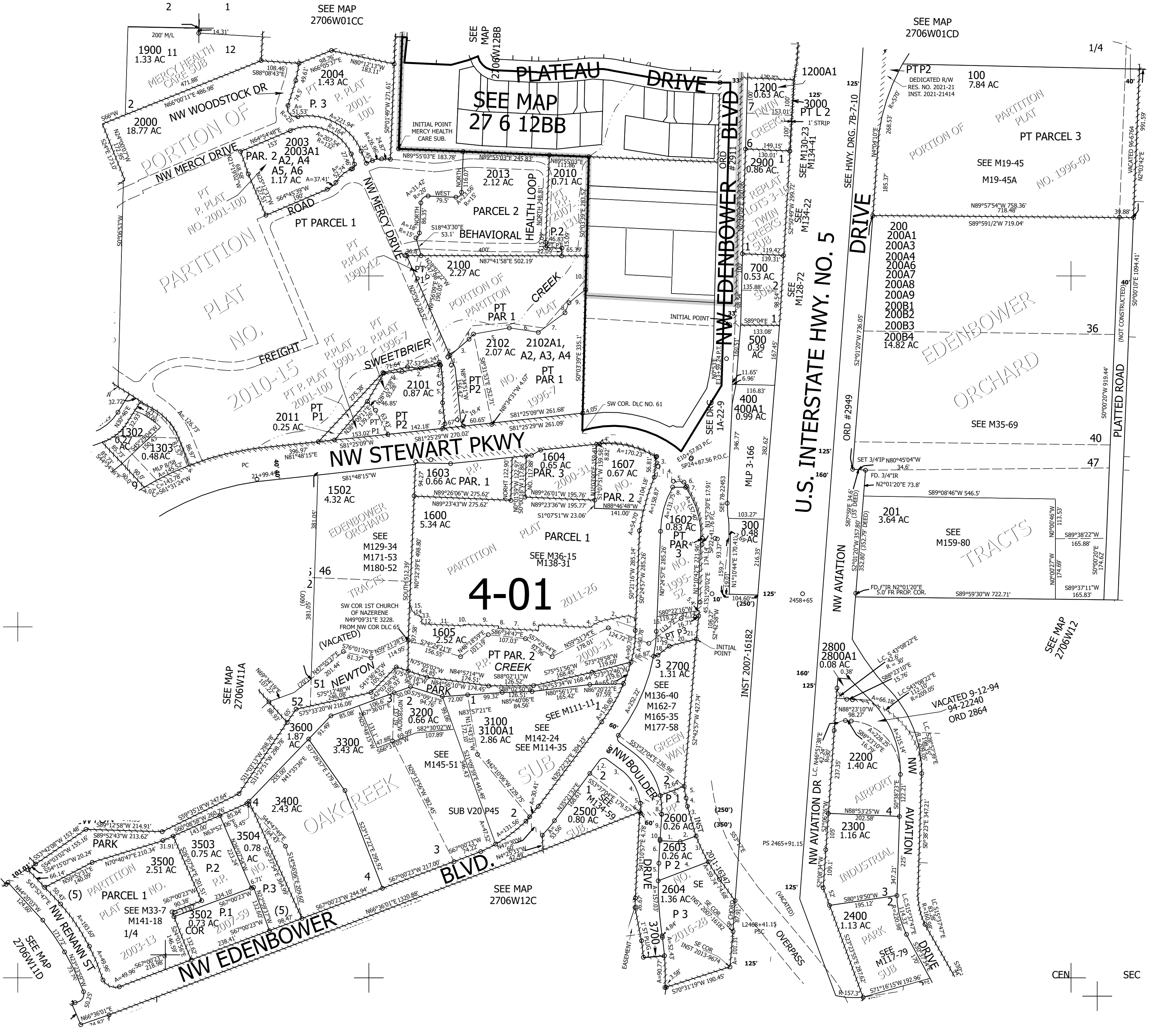
- PARCEL 2500
- N35°21'32"E 45.92'
 - A=23.55' R=15'
 - LC=S82°15'14"W 21.21'
 - S54°58'18"E 46.61'
 - A=113.95' R=145'
 - LC=N30°13'54"W 111.04'
 - S67°23'53"W 0.68'
 - S1°37'30"W 24.95'

- PARCEL 1605
- A=31.22'
 - S77°26'28"W 59.29'
 - A=46.66'
 - A=6.96'
 - N89°25'06"W 142.74'
 - S0°34'54"W 14.97'
 - N89°25'06"W 114.17'
 - S0°34'54"E 7.00'
 - N89°25'06"W 98.35'
 - S0°34'54"W 3.51'
 - N89°25'06"W 121.01'
 - N0°34'54"E 18.5'
 - A=3.73'
 - A=60.48'
 - N89°26'14"W 0.50'
 - S1°56'43"W 42.37'
 - LC=S55°47'47"W 71.19'
R=530' A=71.25'
 - N74°26'39"E 12.16'
 - N48°46'02"E 41.96'
 - N72°28'38"E 79.03'
 - N4°14'50"E 81.66'

- PARCEL 1600
- A=31.22'
 - S77°23'47"W 59.29'
 - A=46.66'
 - A=6.96'
 - N89°27'47"W 142.74'
 - S0°32'13"W 14.97'
 - N89°27'47"W 114.17'
 - S0°32'13"E 7.00'
 - N89°27'47"W 98.35'
 - S0°32'13"W 3.51'
 - N89°27'47"W 121.01'
 - N0°32'13"E 18.50'
 - A=3.74'
 - A=60.49'
 - N89°28'55"W 0.32'

- PARCEL 2600
- S89°05'45"E 57.64'
 - N68°27'40"E 47.82'
 - LC=S17°50'56"E 88.48'
R=530' A=88.59'
 - LC=S11°46'17"E 23.85'
R=530' A=23.85'
 - S10°28'56"E 33.97'
 - N67°30'34"E 72.64'
 - LC=N6°01'42"W 53.43'
R=205' A=53.59'
 - N1°27'37"E 1'
 - N2°07'26"E 71.41'
 - S1°20'16"W 3.86'

- PARCEL 2603
- S89°05'45"E 57.64'
 - N68°27'40"E 47.82'
 - LC=S27°02'16"E 81.33'
R=530' A=81.41'
 - N67°27'15"E 152.5'
 - LC=N0°17'46"E 50.13'
R=970' A=50.15'
 - S1°20'16"W 64.15'



- CANCELLED NOS:
- 1301 1501A1 1300A1
 - 1300A2 1300 1304 1305
 - 1400 2001 1801 1802 601
 - 701 1501 2401 501
 - 2000A1 2000A3 1500
 - 1700 2200A1 2002 200M1
 - 201M1 1201 2601 1100
 - 800 900 1000 1101 100A1
 - 1800 1601 2005 2100A1
 - 2000A2 2006 2007 2008
 - COR 2009 2103 2104 2105 1606
 - 3501 3401 3201 3202
 - 3301 202 2000A4 2000A7
 - 2000A5 2000A6 2012 100A2
 - 600A1 2602 2010A1 3300A1
 - 2003A3 3500A1 2013A1
 - 700A1 2700A1 2000A8
 - 101 200A2 200A5
 - 600

270612B
& INDEX
Roseburg

Lower Right:
123°21'19"W 43°14'6"N
4160543E 584553N ft