

THIS MAP WAS PREPARED FOR ASSESSMENT PURPOSE ONLY.

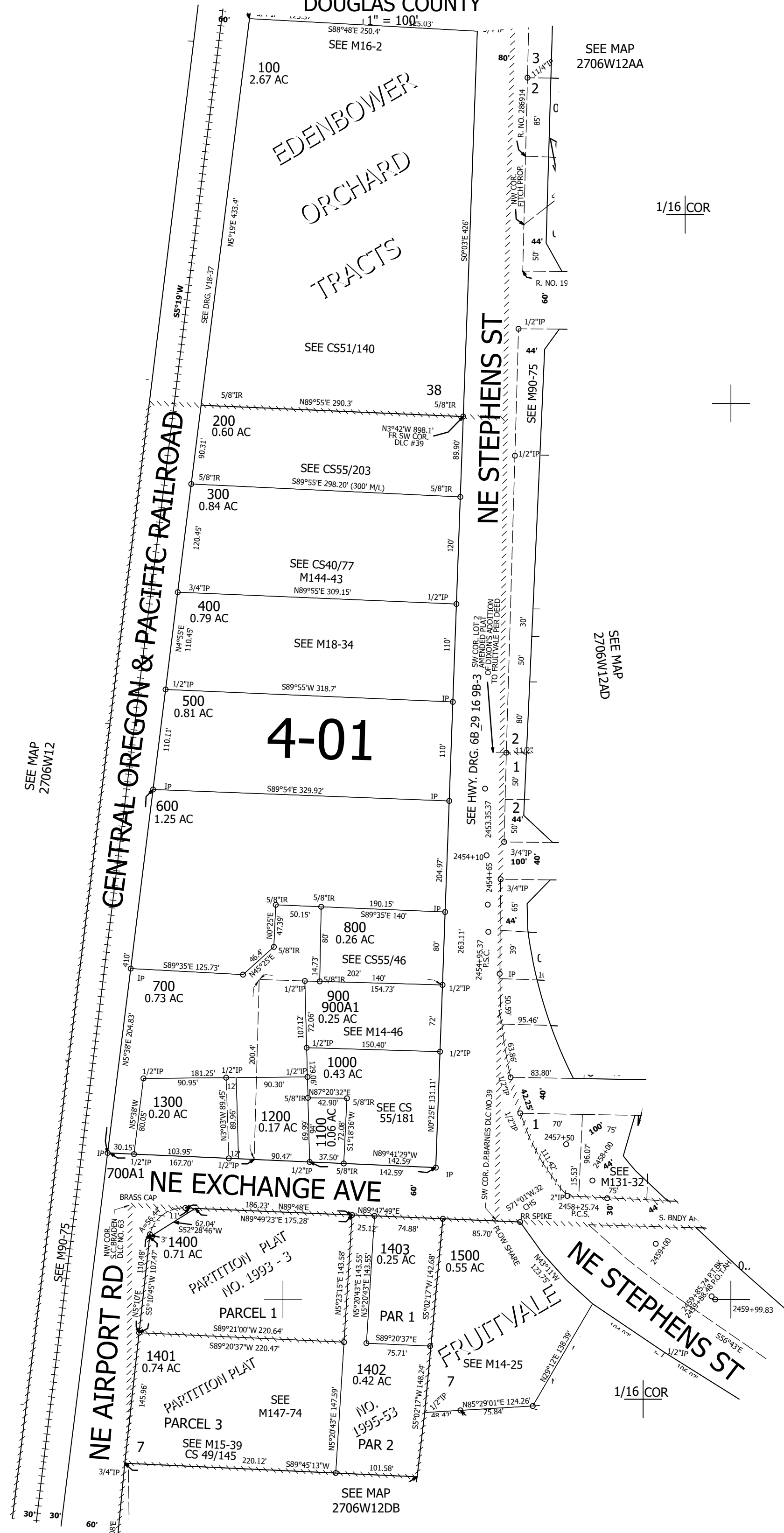
Upper Left:
123°21'25"W 43°14'25"N
4160147E 586460N ft

SW1/4 NE1/4 SEC.12 T.27S. R.06W. W.M.
DOUGLAS COUNTY

Date Exported 2026-03-03

270612AC
Roseburg

CANCELLED NOS:



SEE MAP
2706W12

SEE MAP
2706W12AA

1/16 COR

SEE MAP
2706W12AD

SEE MAP
2706W12DB

1/16 COR

270612AC
Roseburg

Lower Right:
123°20'58"W 43°14'8"N
4162119E 584721N ft