

THIS MAP WAS PREPARED FOR ASSESSMENT PURPOSE ONLY.

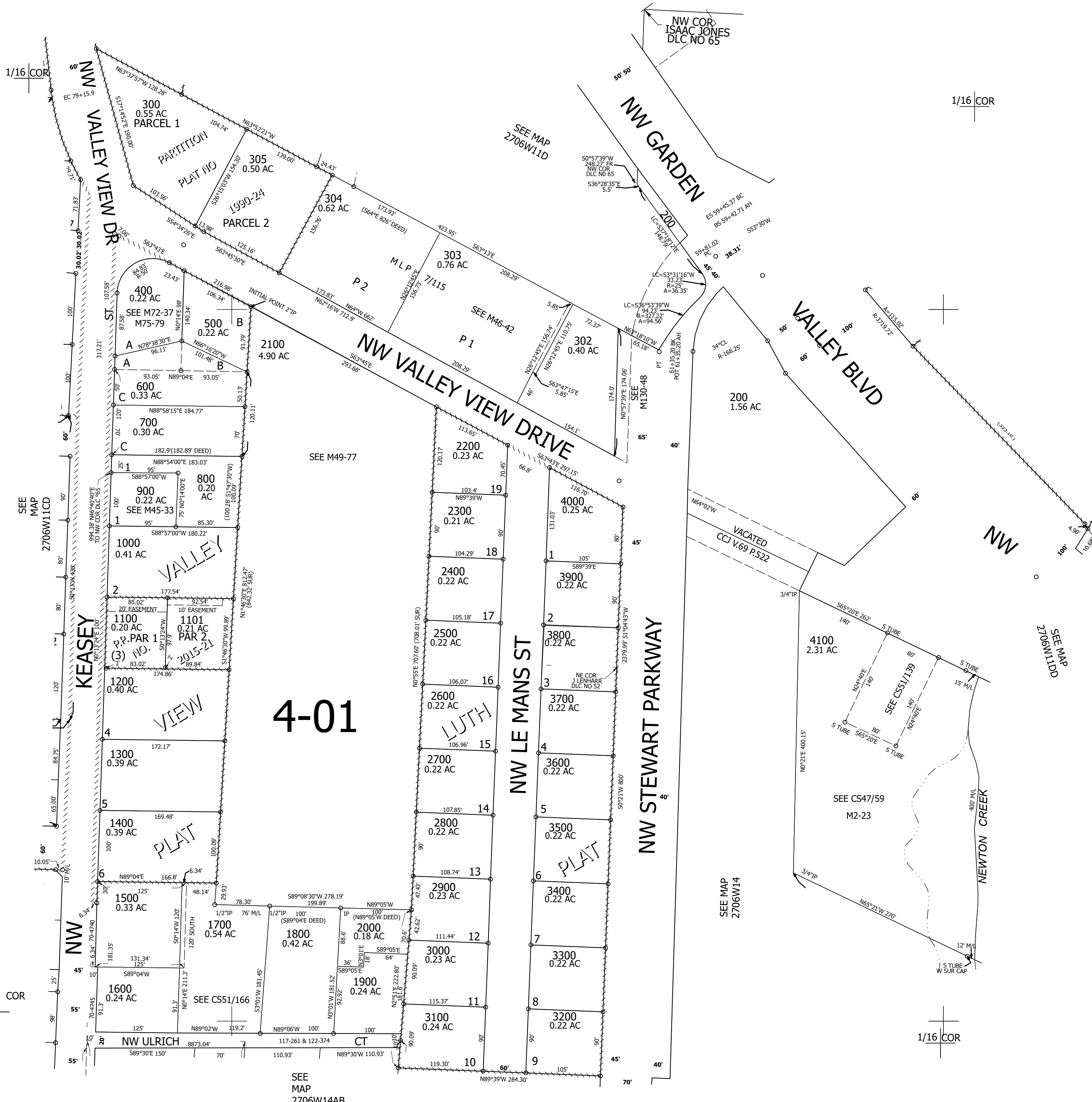
Upper Left:  
123°22'41"W 43°13'59"N  
4154484E 584039N ft

SW1/4 SE1/4 SEC.11 T.27S. R.06W. W.M.  
DOUGLAS COUNTY  
1" = 100'

Date Exported 2025-04-30

270611DC  
Roseburg

CANCELLED NOS:  
301 201 100



4-01

1/4 COR

1/16 COR

270611DC  
Roseburg

Lower Right:  
123°22'13"W 43°13'43"N  
4156459E 582300N ft