

THIS MAP WAS PREPARED FOR ASSESSMENT PURPOSE ONLY.

Upper Left:
123°23'16"W 43°14'12"N
4151910E 585421N ft

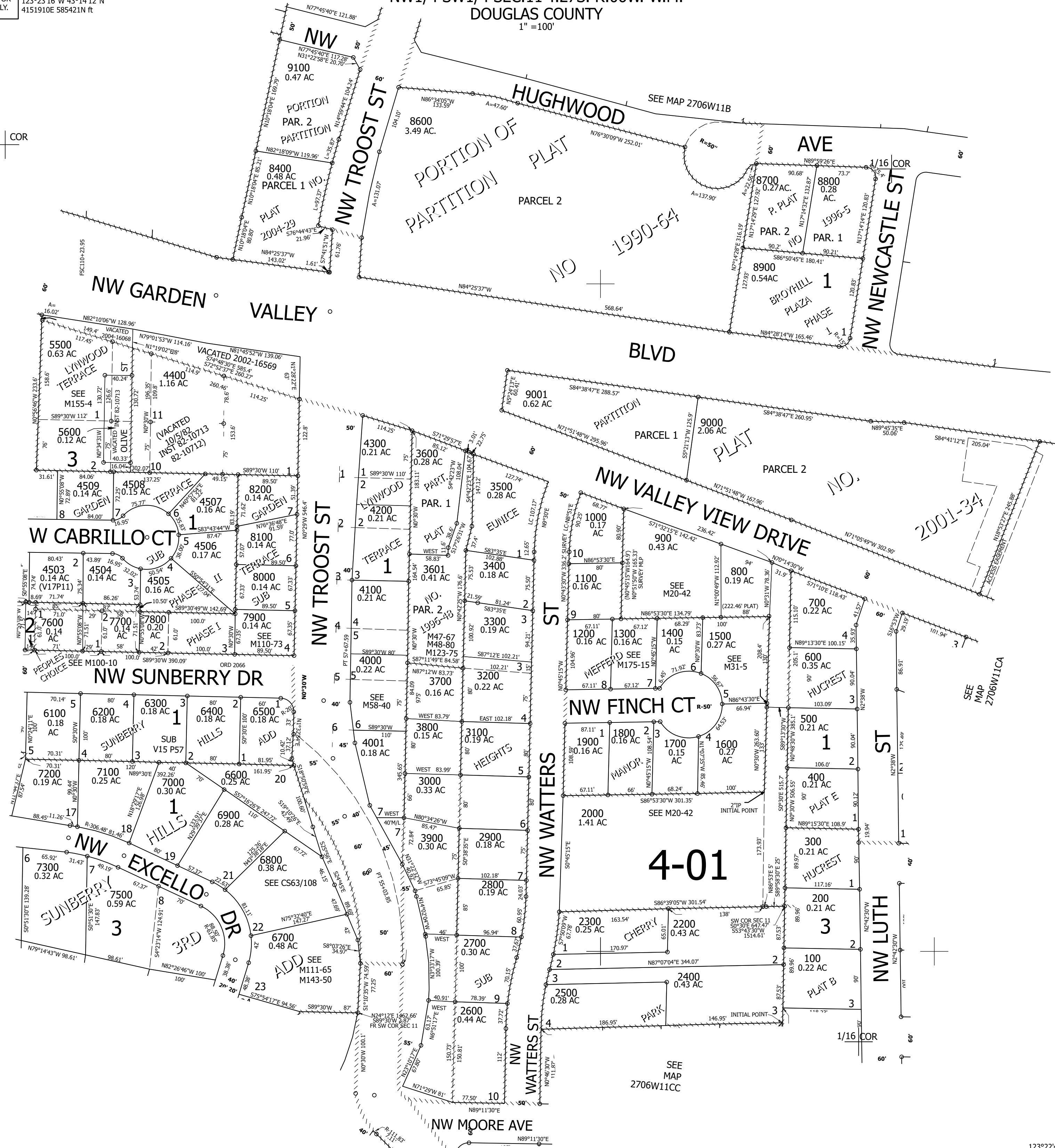
NW1/4 SW1/4 SEC.11 T.27S. R.06W. W.M.
DOUGLAS COUNTY
1" = 100'

Date Exported 2024-12-11

270611CB
Roseburg

CANCELLED NOS:
4600 THRU 5400
5700 THRU 6000
4501 200A1 4500
2100 7701 3501
4502 4510 7601
8500 5501 5601
8300 7400

1/4 COR



SEE MAP
2706W10DA

SEE MAP
2706W11CA

SEE MAP
2706W11CC

1/16 COR

1/16 COR

270611CB
Roseburg

Lower Right:
123°22'49"W 43°13'55"N
4153888E 583701N ft