

THIS MAP WAS PREPARED FOR ASSESSMENT PURPOSE ONLY.

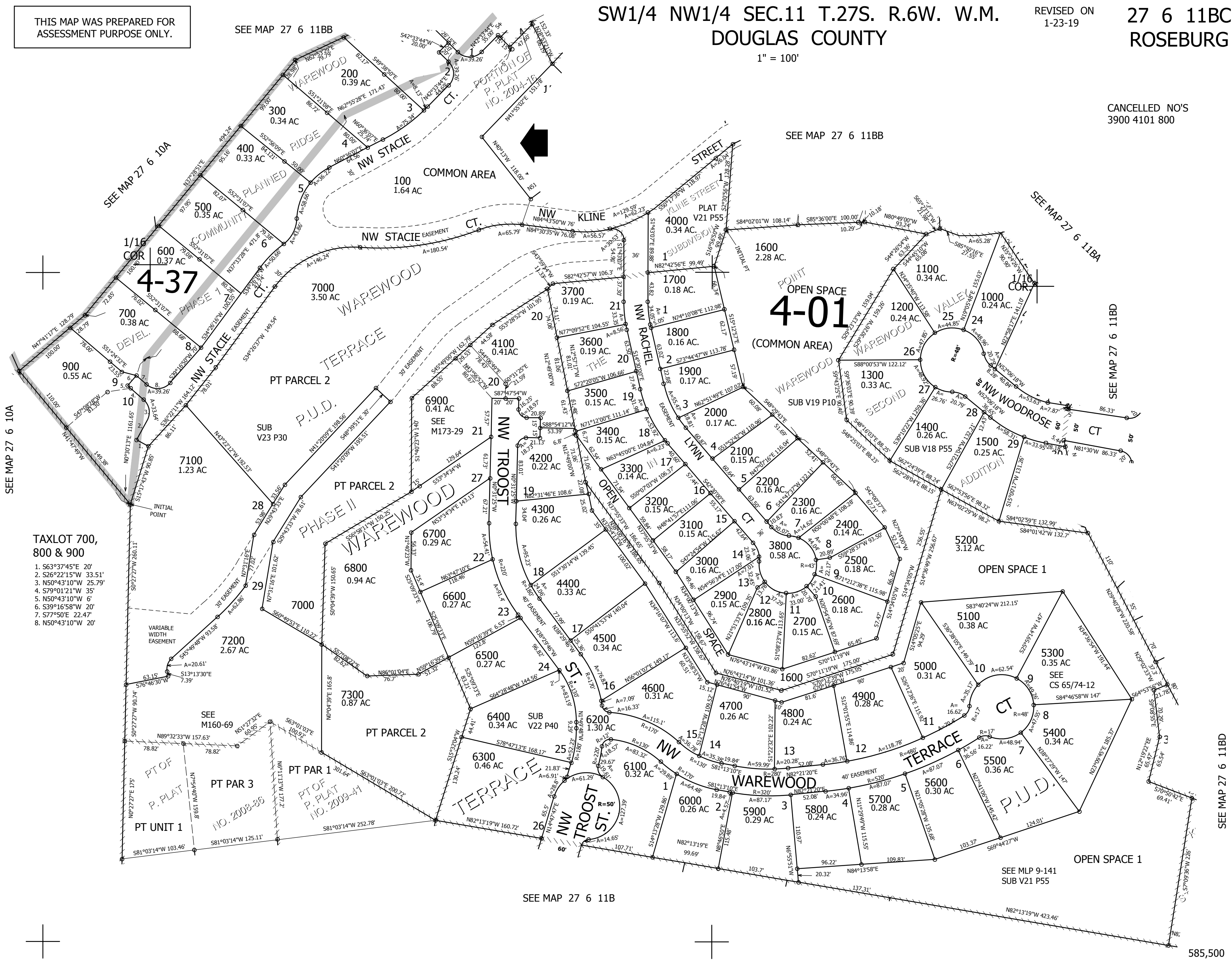
SW1/4 NW1/4 SEC.11 T.27S. R.6W. W.M. DOUGLAS COUNTY

REVISED ON 1-23-19

27 6 11BC ROSEBURG

1" = 100'

CANCELLED NO'S 3900 4101 800



SEE MAP 27 6 10A

SEE MAP 27 6 11BB

SEE MAP 27 6 11BA

SEE MAP 27 6 11BD

SEE MAP 27 6 11BD

SEE MAP 27 6 11B

- TAXLOT 700, 800 & 900
1. S63°37'45"E 20'
 2. S26°22'15"W 33.51'
 3. N50°43'15"W 25.79'
 4. S79°01'21"W 35'
 5. N50°43'10"W 6'
 6. S39°16'58"W 20'
 7. S77°50'E 22.47'
 8. N50°43'10"W 20'

1/4 COR

4,153,000

1/16 COR

27 6 11BC ROSEBURG

585,500