

THIS MAP WAS PREPARED FOR ASSESSMENT PURPOSE ONLY.

Upper Left:
123°23'48"W 43°13'56"N
4149479E 583898N ft

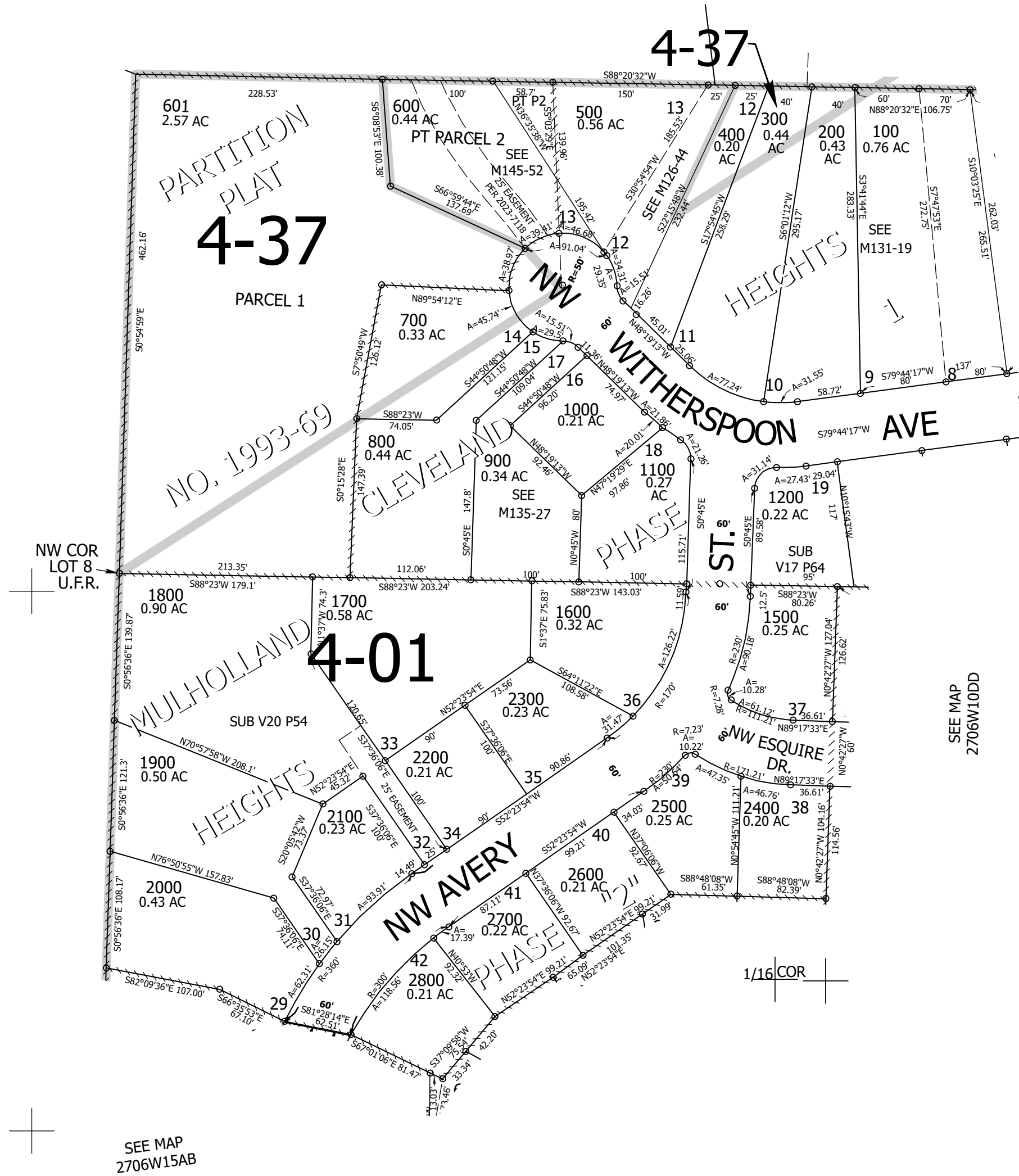
SW1/4 SE1/4 SEC.10 T.27S. R.06W. W.M.
DOUGLAS COUNTY
1" = 100'

Date Exported 2023-07-18

270610DC
Roseburg

CANCELLED NOS:
1301 1302 1303
1304 1305 1300
1400 1199 401
402 501 602

SEE MAP
2706W10



SEE MAP
2706W10DD

SEE MAP
2706W15AB

270610DC
Roseburg

Lower Right:
123°23'21"W 43°13'39"N
4151441E 582159N ft