

THIS MAP WAS PREPARED FOR ASSESSMENT PURPOSE ONLY.

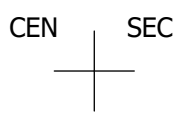
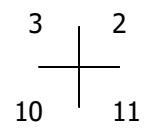
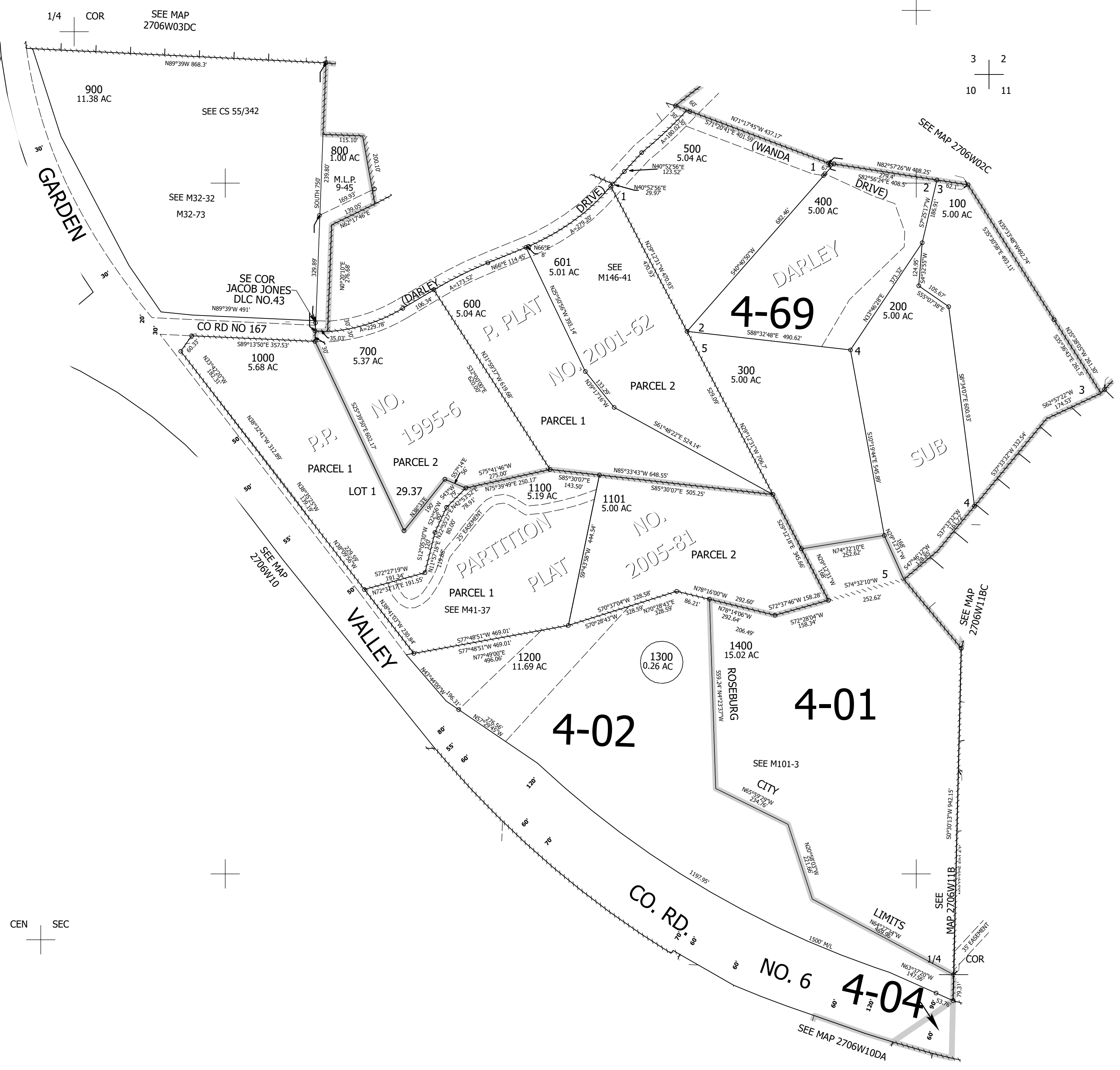
Upper Left:
123°23'57"W 43°14'38"N
4148998E 588226N ft

NE1/4 SEC.10 T.27S. R.06W. W.M.
DOUGLAS COUNTY
1" = 200'

Date Exported 2025-11-19

270610A
& INDEX
Roseburg

CANCELLED NOS:
301



270610A
& INDEX
Roseburg

Lower Right:
123°23'2"W 43°14'4"N
4152924E 584626N ft