

THIS MAP WAS PREPARED FOR ASSESSMENT PURPOSE ONLY.

SE1/4 SEC.9 T.27S. R.6W. W.M. DOUGLAS COUNTY

REVISED ON 6-16-21

27 6 9D

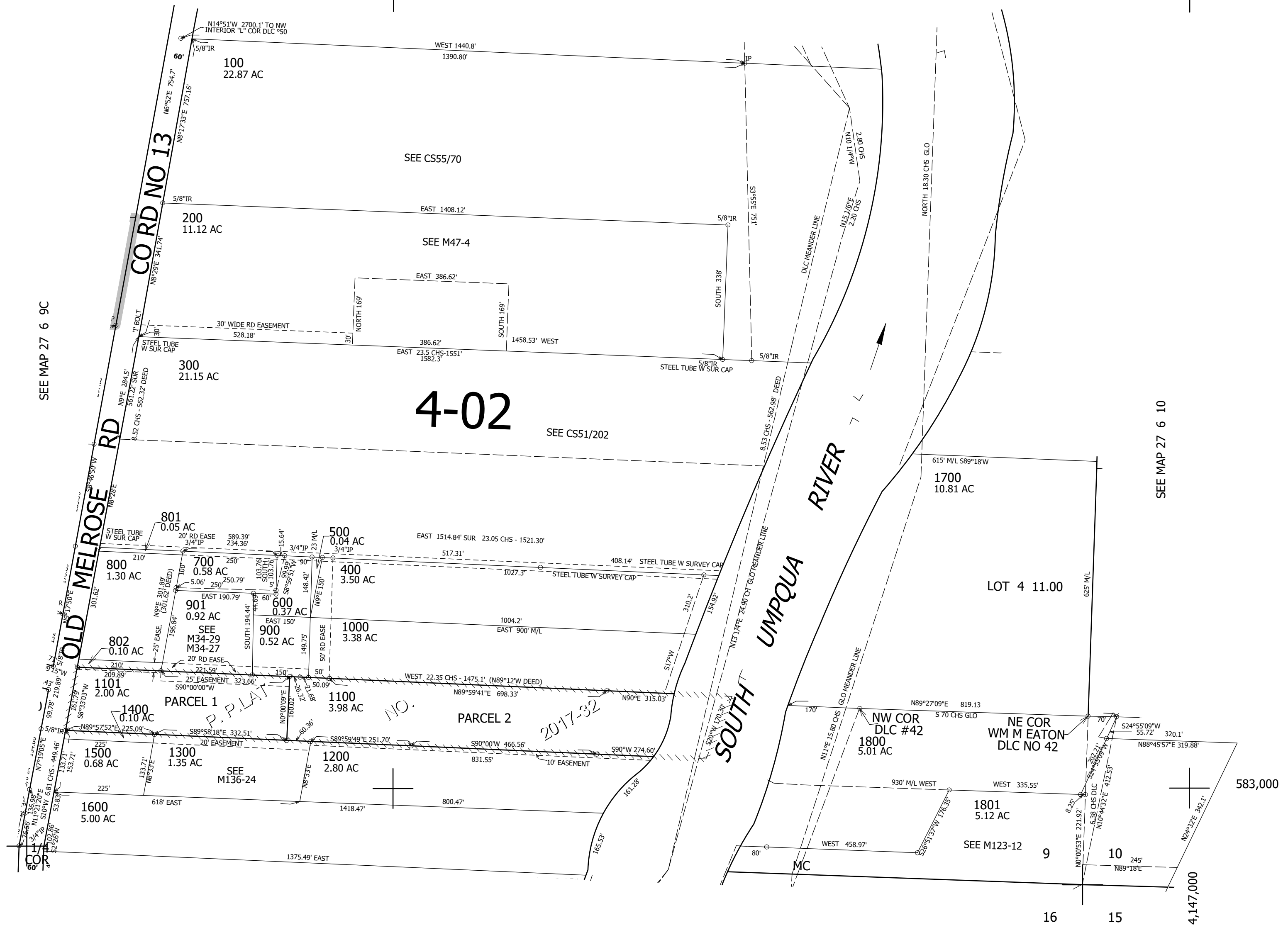
1" = 200'

CEN SEC

1/4 COR

CANCELLED NO'S

SEE MAP 27 6 9



SEE MAP 27 6 16A

27 6 9D