

THIS MAP WAS PREPARED FOR ASSESSMENT PURPOSE ONLY.

Upper Left:
123°27'40"W 43°14'40"N
4132474E 588964N ft

NE1/4 SEC.07 T.27S. R.06W. W.M.
DOUGLAS COUNTY
1" = 200'

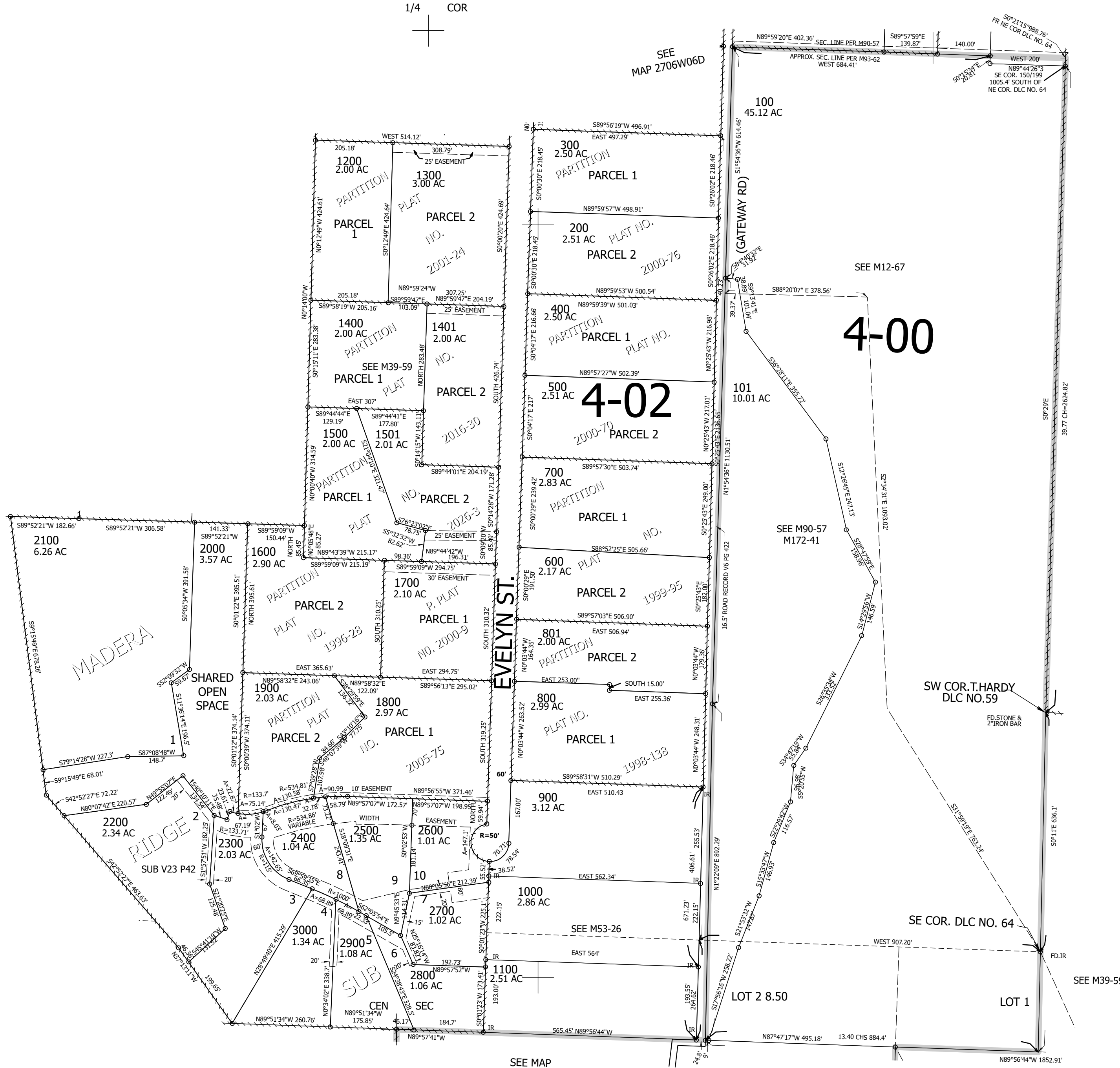
Date Exported 2026-01-14

270607A

CANCELLED NOS:
601 501 301
201 1201 1402
102 103

1/4 COR

b
7



SEE MAP 2706W06D

SEE M12-67

SEE M90-57
M172-41

SEE MAP 2706W07

1/4 COR



270607A

Lower Right:
123°26'45"W 43°14'6"N
4136401E 585364N ft