

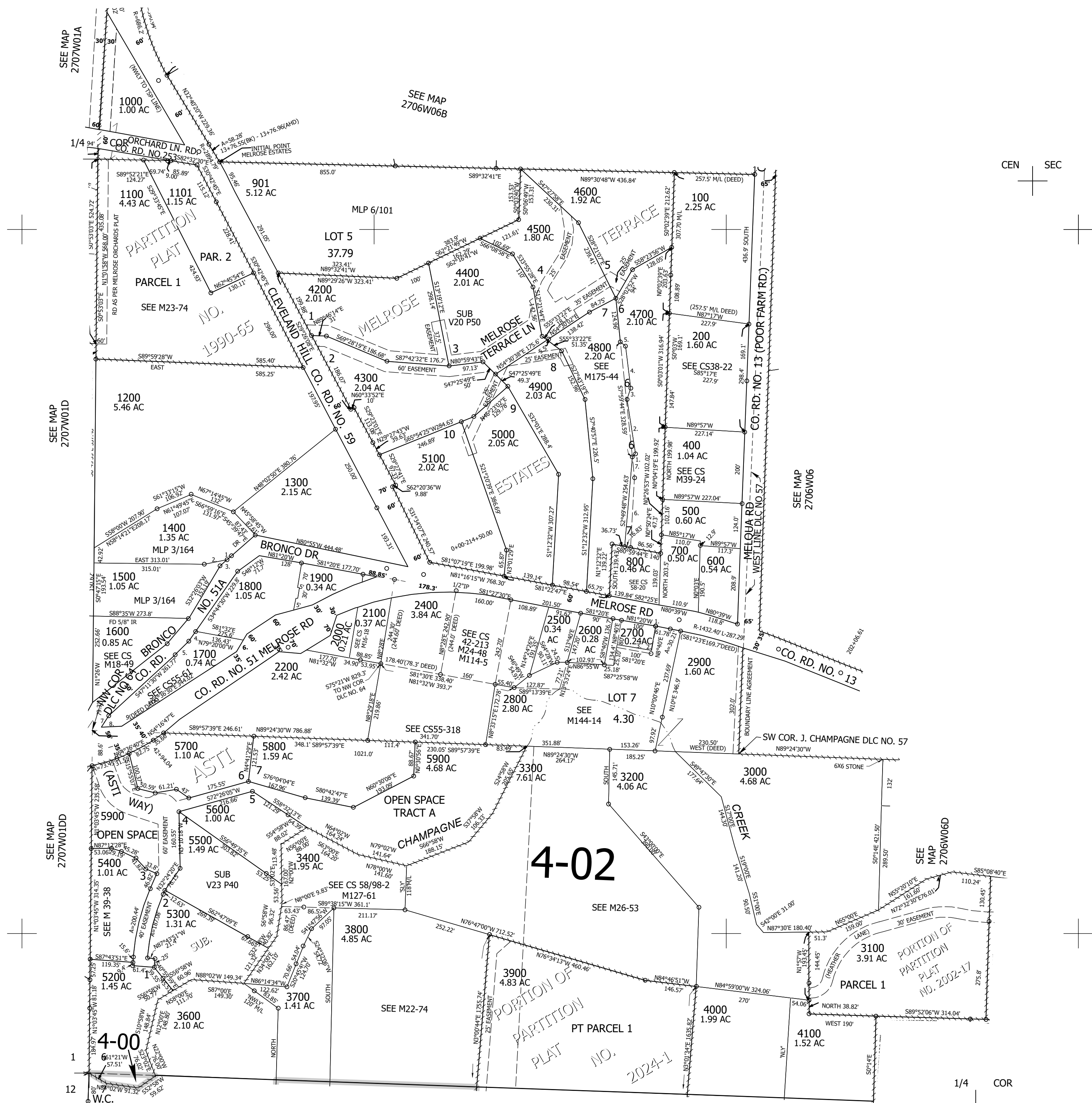
PARCEL 2800
P.O.B. S53°57'52"E 2106.15'
FROM W 1/4 COR SEC 6
1. N81°20'W 0.54'
2. S10°21'52"W 69.77'
3. N80°43'50"W 97.4'

PARCEL 4700 & 4800
1. N42°15'20"E 12.92'
2. N10°56'36"W 156.20'
3. N16°44'16"E 33.57'
4. N9°18'03"W 120.59'
5. N53°23'31"W 18.51'
6. N01°13'38"E 197.96'
7. N7°59'44"W 59.62'

PARCEL 1700
1. S41°23'41"W 19.01'
2. N78°05'23"E 64.79'
3. S41°23'41"W 28.33'

PARCEL 1400
4. S25°36'30"W 40.62'
5. S41°05'W 58.21'
6. N25°36'00"E 41.55'
7. S32°55'W 42.35'
8. N78°48'E 61.69'
9. N58°58'E 50.1'

CANCELLED NOS:
300 3701 900
902 1100M1 1101M1
2801 2502 2701
3500 4701 4801
2300 2501



SEE MAP 2707W01A

SEE MAP 2706W06B

SEE MAP 2707W01D

SEE MAP 2706W06

SEE MAP 2707W01DD

SEE MAP 2706W06D

SEE MAP 2706W07

CEN SEC

1/4 COR