

THIS MAP WAS PREPARED FOR ASSESSMENT PURPOSE ONLY.

Upper Left:  
123°28'9"W 43°15'33"N  
4130550E 594391N ft

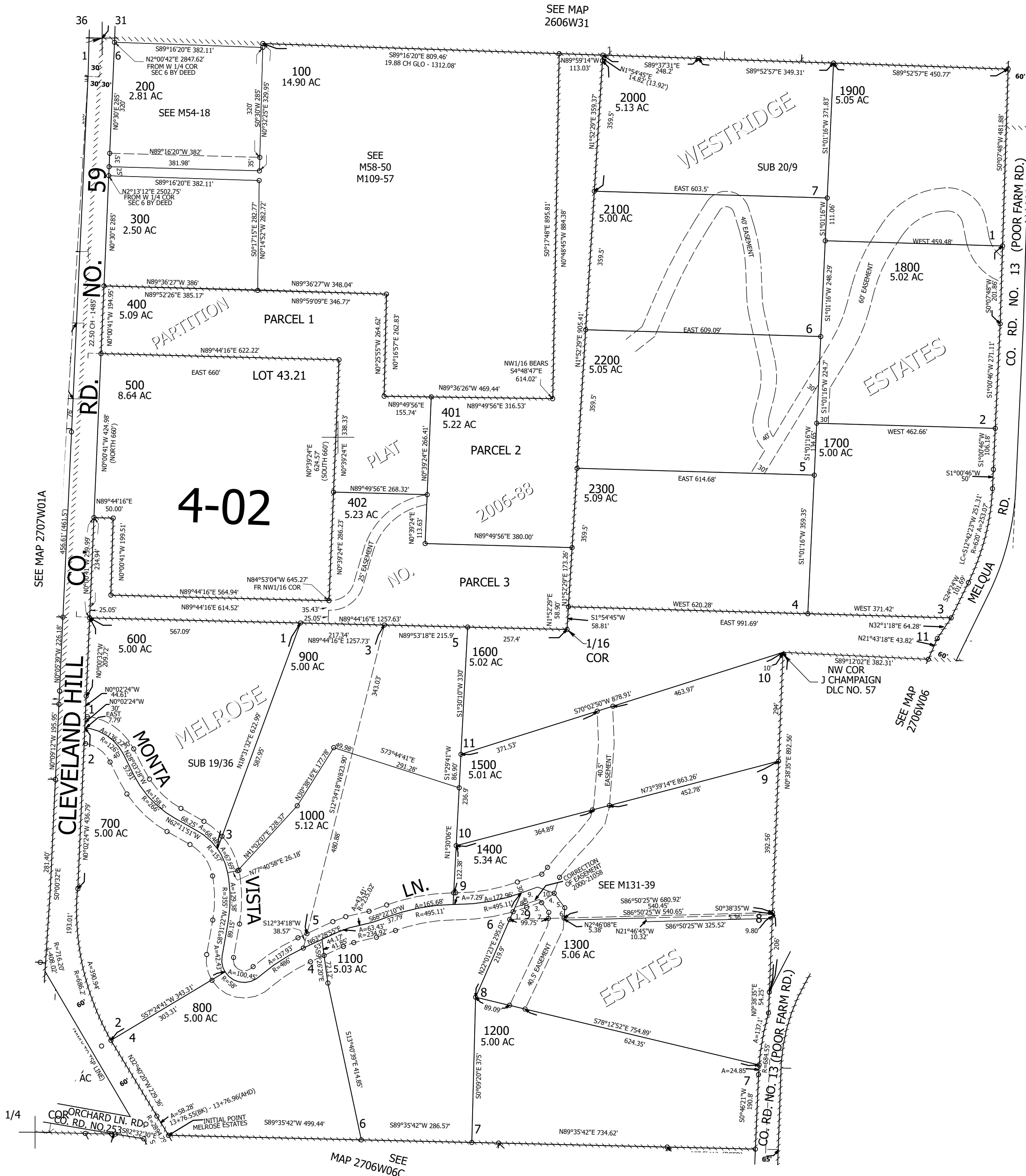
NW1/4 SEC.06 T.27S. R.06W. W.M.  
DOUGLAS COUNTY  
1" = 200'

Date Exported 2025-11-19

270606B

- PARCEL 1300
- N22°01'23"E 21.6'
  - LC=N70°20'34"E 36.97'
  - N68°21'19"E 40.11'
  - N54°22'16"E 40.53'
  - S37°42'44"E 46.42'
  - S2°46'08"W 26.43'
  - S86°50'25"W 140.47'
  - N22°00'27"E 53.52'
  - N68°21'14"E 44.56'
  - S70°57'56"E 45.87'

CANCELLED NOS:  
1301 1401 1302  
1402 101 501  
901 1001



1/4 COR

CEN SEC

270606B

Lower Right:  
123°27'14"W 43°14'59"N  
4134477E 590791N ft