

THIS MAP WAS PREPARED FOR ASSESSMENT PURPOSE ONLY.

SW1/4 SEC.5 T.27S. R.6W. W.M. DOUGLAS COUNTY

REVISED ON 11-15-01

27 6 5C

1" = 200'

CANCELLED NO'S 801

SEE MAP 27 6 6

SEE MAP 27 6 5

CEN SEC

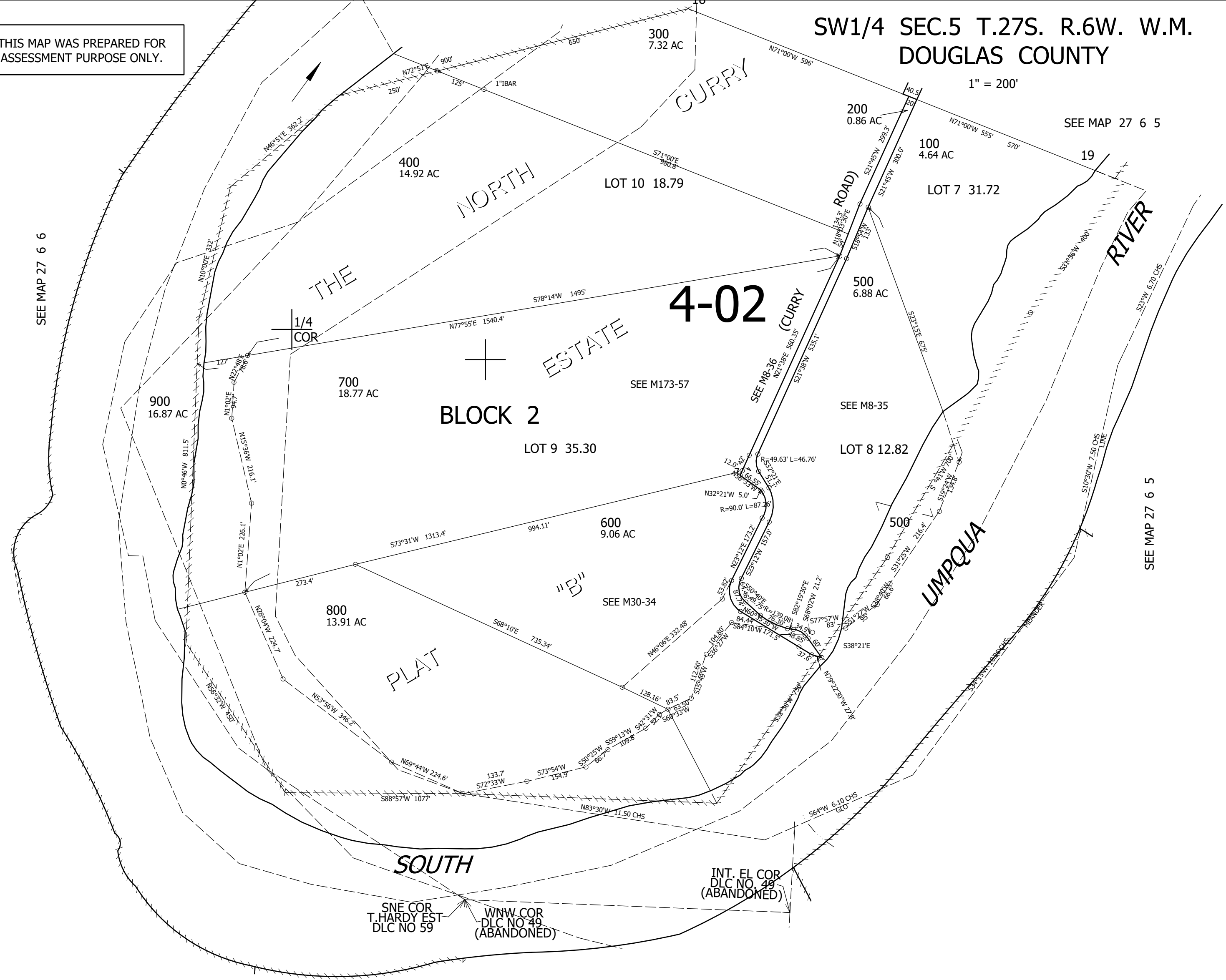
SEE MAP 27 6 5

589,000

6 5
7 8

4,137,000

1/4 COR 27 6 5C



SEE MAP 27 6 5