

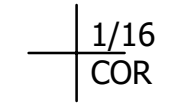
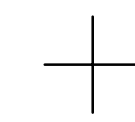
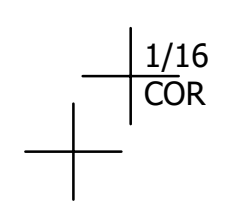
THIS MAP WAS PREPARED FOR ASSESSMENT PURPOSE ONLY.

SE1/4 SW1/4 SEC.4 T.27S. R.6W. W.M. DOUGLAS COUNTY

REVISED ON 6-9-21

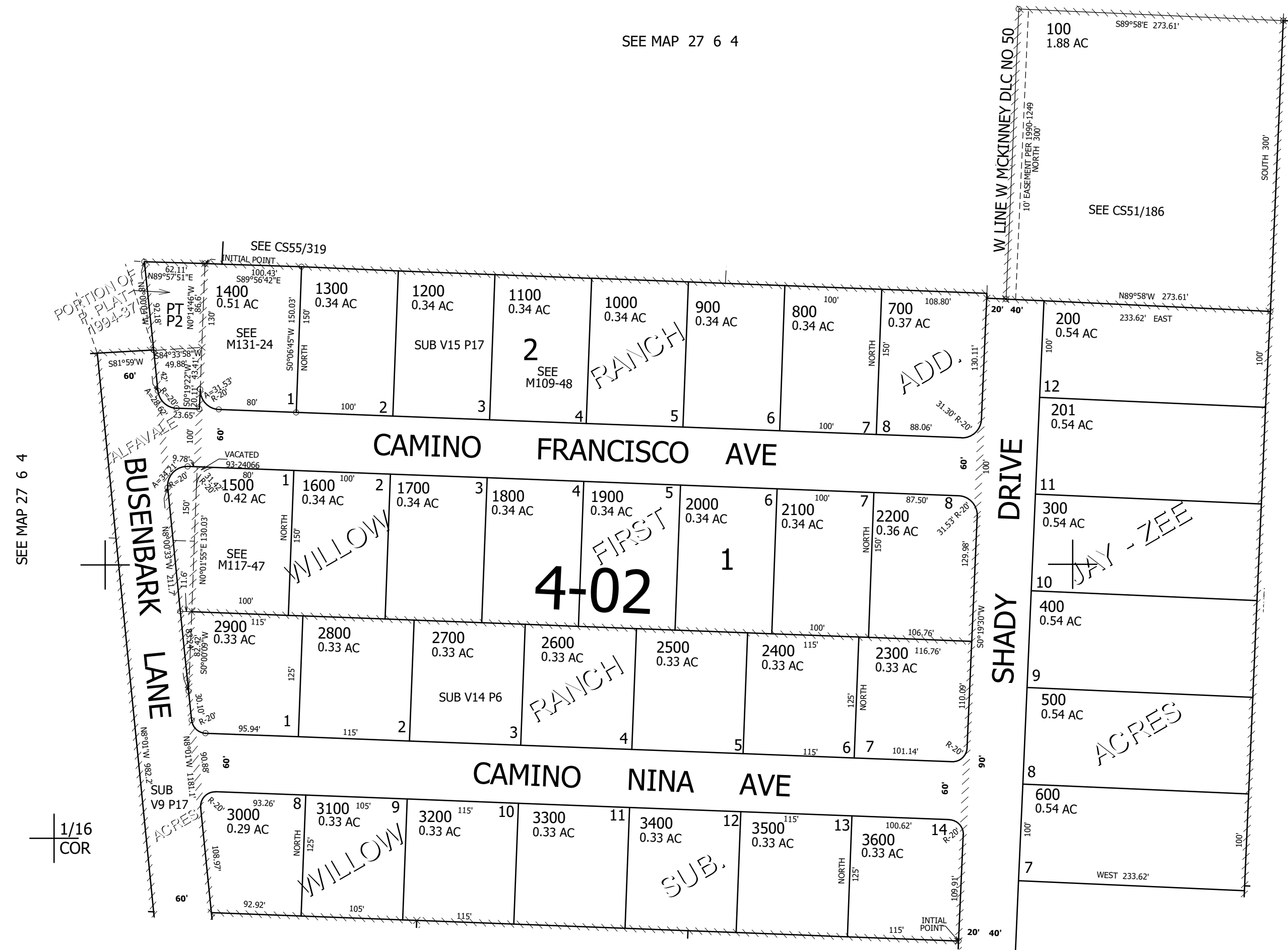
27 6 4CD

1" = 100'



CANCELLED NO'S 1501 3700

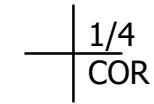
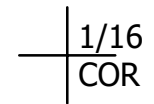
SEE MAP 27 6 4



SEE MAP 27 6 4

SEE MAP 27 6 4

588,500



SEE MAP 27 6 9B

4,144,000

27 6 4CD