

THIS MAP WAS PREPARED FOR ASSESSMENT PURPOSE ONLY.

SW1/4 SE1/4 SEC.3 T.27S. R.6W. W.M. DOUGLAS COUNTY

REVISED ON 7-14-97

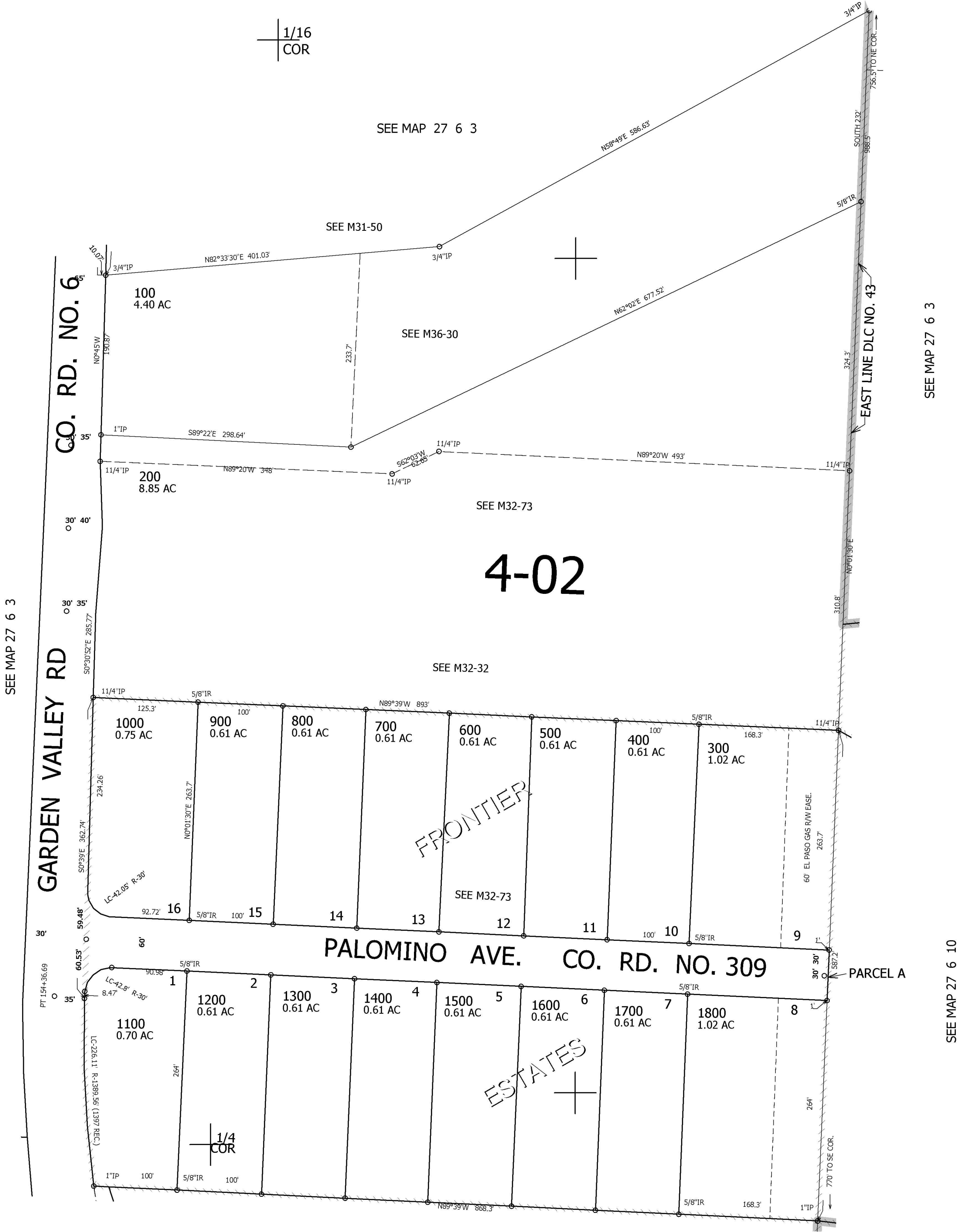
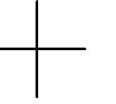
27 6 3DC

1" = 100'

1/16 COR

1/16 COR

CANCELLED NO'S 1900



SEE MAP 27 6 3

SEE MAP 27 6 10

588,000

1/16 COR

4,151,000

27 6 3DC

SEE MAP 27 6 10A