

THIS MAP WAS PREPARED FOR ASSESSMENT PURPOSE ONLY.

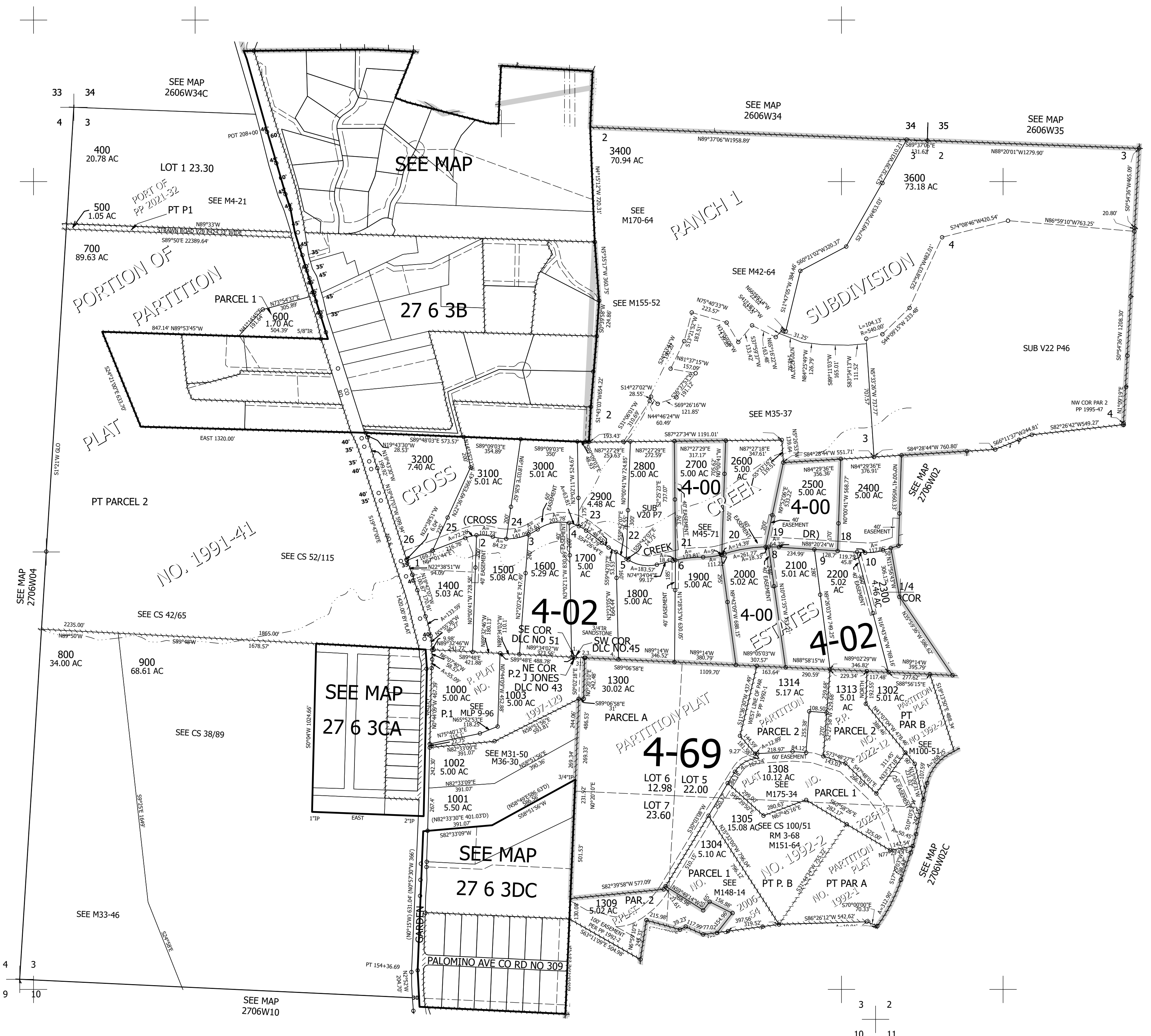
Upper Left:
123°24'34"W 43°15'38"N
4146452E 594321N ft

SEC.03 T.27S. R.06W. W.M.
DOUGLAS COUNTY
1" = 400'

Date Exported 2026-04-07

270603
& INDEX

CANCELLED NOS:
101 1301 601
1307 1303 1100
1100M1 700M1 1200
100 1310 1311
1306 3802 3803
3900 3903 3300
3500 3501 1312
200 201



3 2
10 11

270603
& INDEX

Lower Right:
123°22'45"W 43°14'32"N
4154301E 587366N ft