

THIS MAP WAS PREPARED FOR ASSESSMENT PURPOSE ONLY.

Upper Left:  
123°22'48"W 43°15'9"N  
4154178E 591160N ft

SE1/4 SEC.02 T.27S. R.06W. W.M.  
DOUGLAS COUNTY  
1" = 200'

Date Exported 2026-02-11

PARCEL 900  
1. S35°02'03"W 12.3'  
2. S40°59'39"E 27.1'  
3. S23°46'45"E 43.09'

PARCEL 1900  
1. N66°04'23"W 14.98'  
2. S34°37'59"W 12.28'  
3. S40°59'07"E 27.15'  
4. S23°49'23"E 43.13'

PARCEL 800  
1. N34°24'33"W 51.37'  
2. N56°27'41"W 44.09'  
3. N82°46'32"W 37.4'  
4. S72°34'08"W 35.85'

SEE MAP  
2706W02A

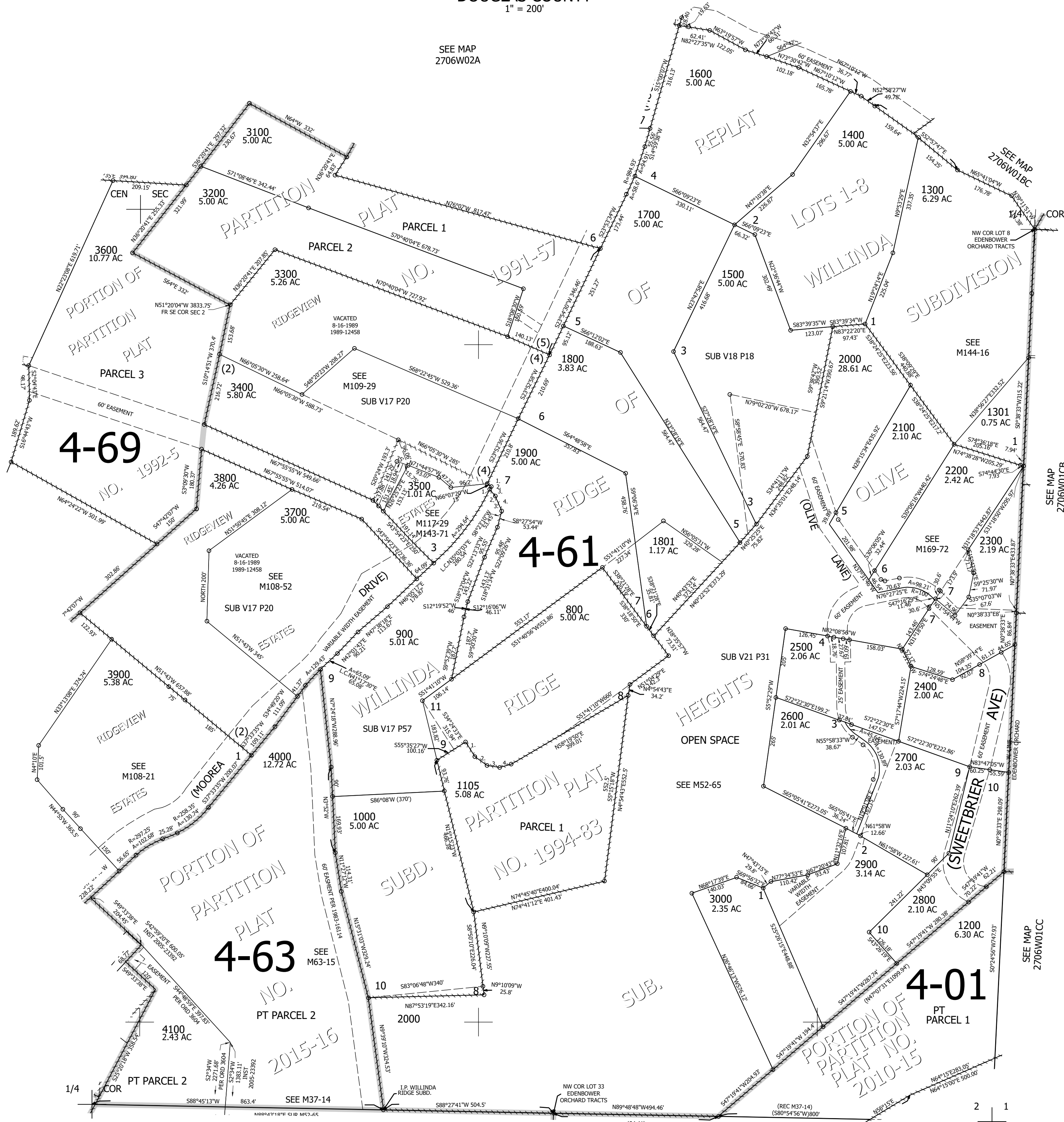
SEE MAP  
2706W01BC

SEE MAP  
2706W01CB

SEE MAP  
2706W01CC

SEE MAP  
2706W11A

CANCELLED NOS:  
100 200 300  
400 500 600  
700 1001 1104  
801 901 902  
1901 1501 1100  
1101 1102 1106  
2301 1103 701  
1103 1701



SEE MAP  
2706W02C

2 1  
11 12

270602D  
Roseburg

Lower Right:  
123°21'53"W 43°14'35"N  
4158104E 587560N ft