

THIS MAP WAS PREPARED FOR ASSESSMENT PURPOSE ONLY.

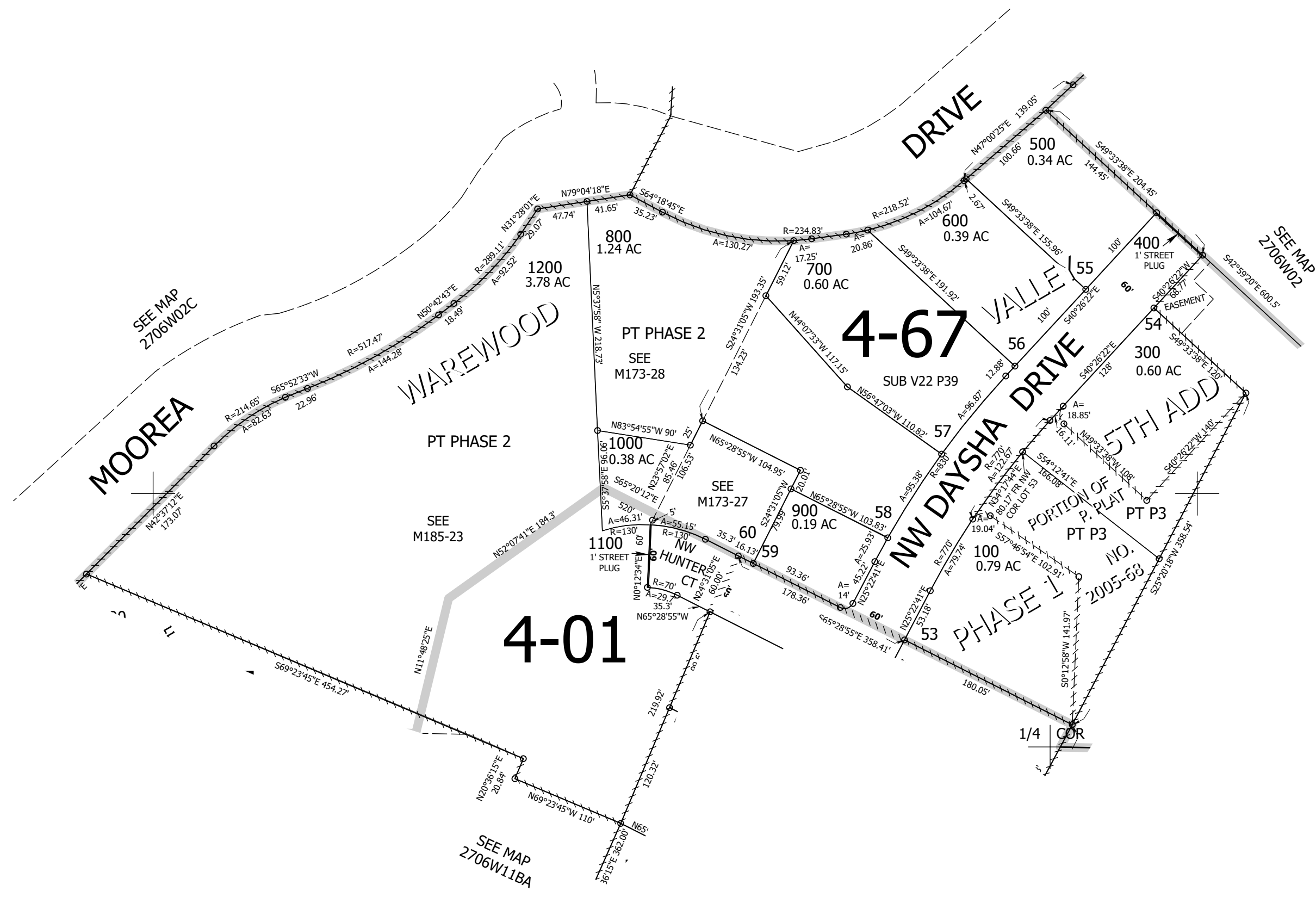
Upper Left:
123°22'56"W 43°14'47"N
4153503E 588909N ft

SE1/4 SW1/4 SEC.02 T.27S. R.06W. W.M.
DOUGLAS COUNTY
1" = 100'

Date Exported 2025-02-13

270602CD
Roseburg

CANCELLED NOS:
200 201 1201
1202



/16 COR

1/4 COR

270602CD
Roseburg

Lower Right:
123°22'29"W 43°14'30"N
4155481E 587189N ft