

THIS MAP WAS PREPARED FOR ASSESSMENT PURPOSE ONLY.

Upper Left:
123°23'28"W 43°15'1"N
4151232E 590422N ft

SW1/4 SEC.02 T.27S. R.06W. W.M. DOUGLAS COUNTY

1" = 200'

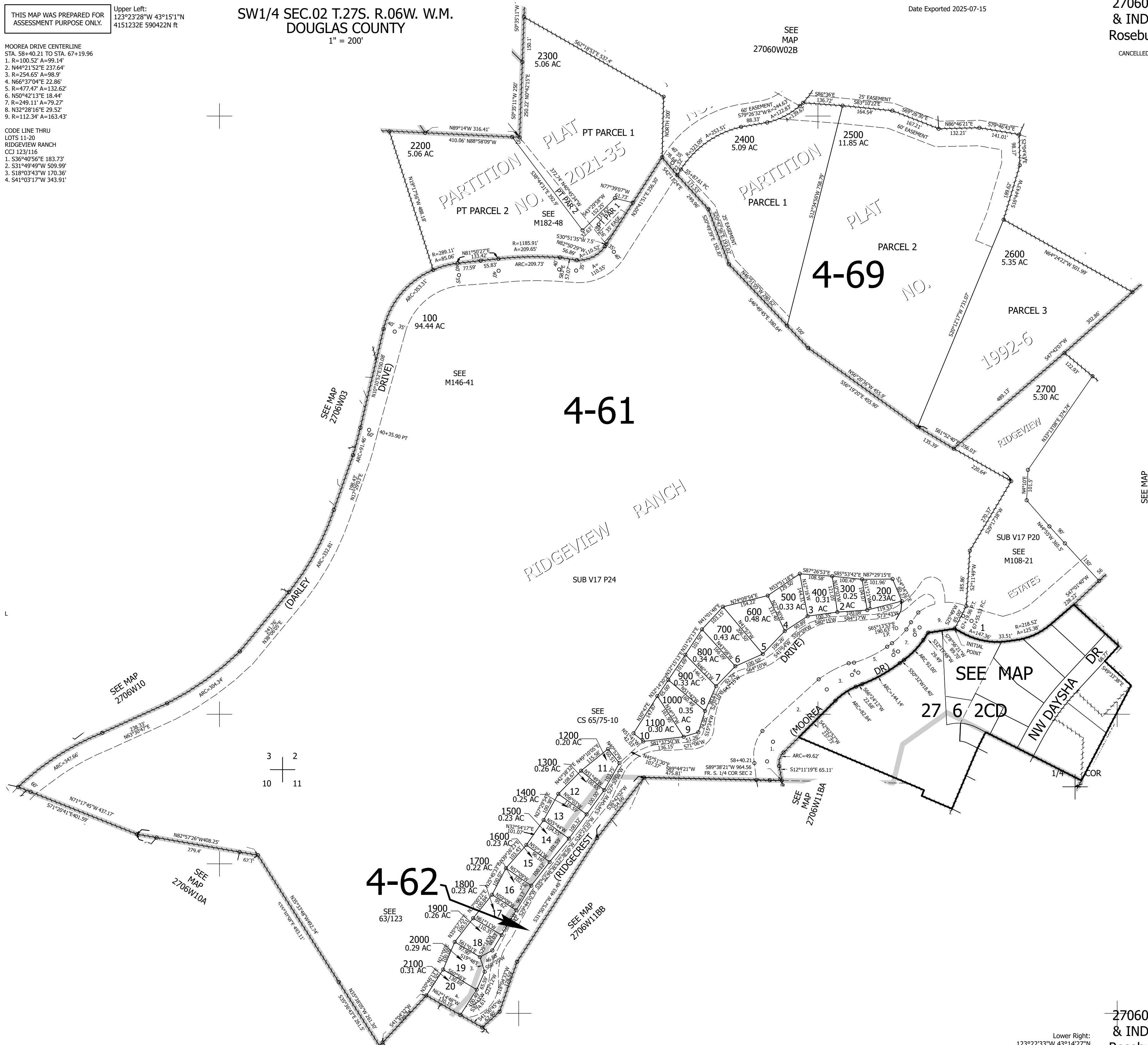
Date Exported 2025-07-15

270602C
& INDEX
Roseburg

CANCELLED NOS:

- MOOREA DRIVE CENTERLINE
STA. 58+40.21 TO STA. 67+19.96
1. R=100.52' A=99.14'
 2. N44°21'52"E 237.64'
 3. R=254.65' A=98.9'
 4. N66°37'04"E 22.86'
 5. R=477.47' A=132.62'
 6. N50°42'13"E 18.44'
 7. R=249.11' A=79.27'
 8. N32°28'16"E 29.52'
 9. R=112.34' A=163.43'

- CODE LINE THRU
LOTS 11-20
RIDGEVIEW RANCH
CCJ 123/116
1. S36°40'56"E 183.73'
 2. S31°49'49"W 509.99'
 3. S18°03'43"W 170.36'
 4. S41°03'17"W 343.91'



SEE
MAP
27060W02B

PARTITION PLAT
NO. 2021-35
PT PARCEL 1
PT PARCEL 2

PARTITION PLAT
PARCEL 1
PARCEL 2

4-69

4-61

RIDGEVIEW RANCH
SUB V17 P24

1992-6

SEE MAP

27 6 2CD

NW DAYSHA DR

4-62

SEE MAP
2706W10

SEE MAP
2706W10A

SEE MAP
2706W11B

SEE MAP
2706W11BA

SEE MAP
2706W02D

3 2
10 11

Lower Right:
123°22'33"W 43°14'27"N
4155158E 586822N ft

270602C
& INDEX
Roseburg