

THIS MAP WAS PREPARED FOR ASSESSMENT PURPOSE ONLY.

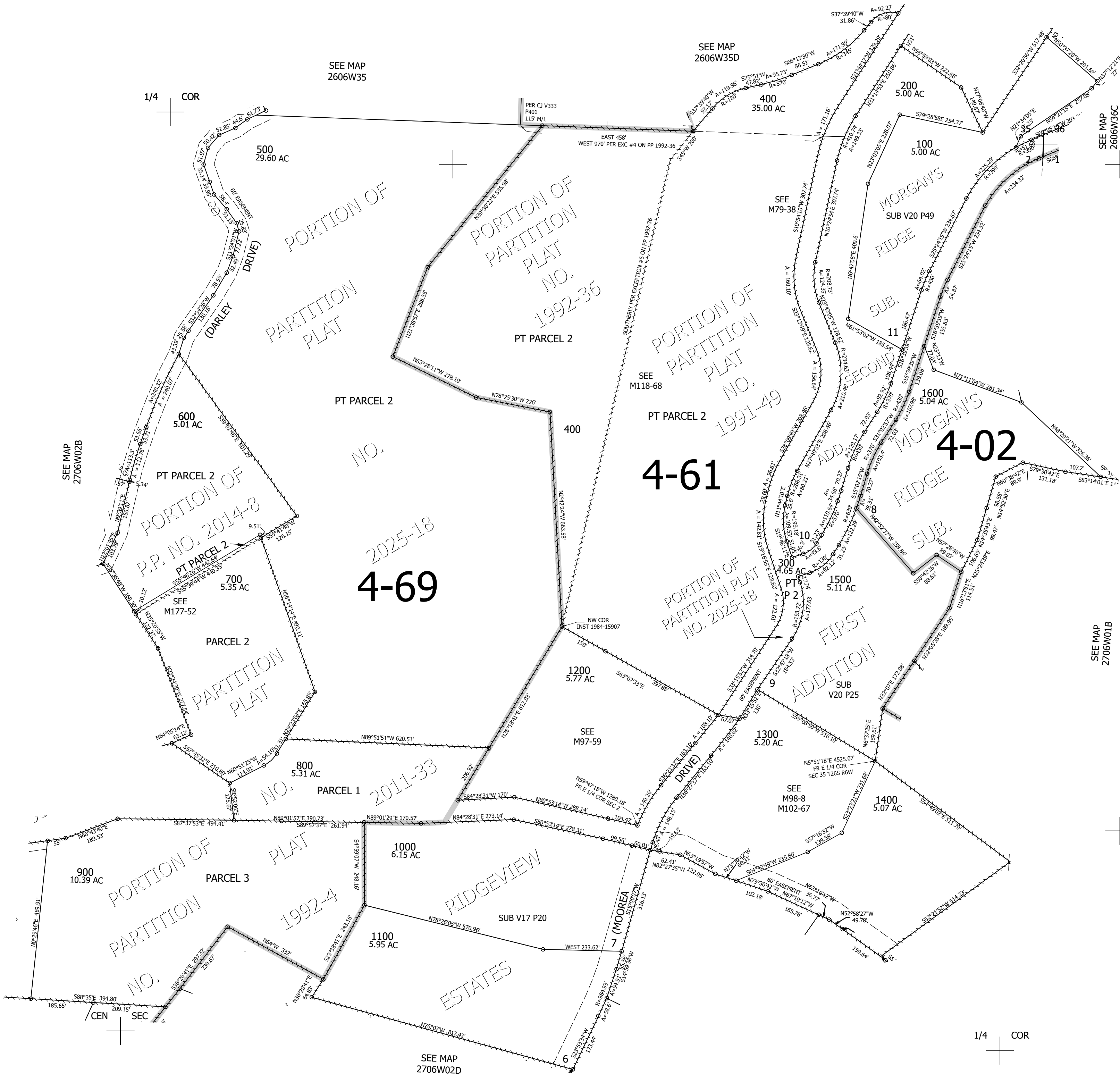
Upper Left:
123°22'47"W 43°15'33"N
4154371E 593610N ft

NE1/4 SEC. 2 T.27S. R.6W. W.M.
DOUGLAS COUNTY
1" = 200'

Date Exported 2025-07-03

270602A

CANCELLED NOS:



1/4 COR

1/4 COR

CEN SEC

Lower Right:
123°21'52"W 43°15'N
4158295E 590133N ft

270602A