

THIS MAP WAS PREPARED FOR ASSESSMENT PURPOSE ONLY.

Upper Left:
123°23'36"W 43°15'32"N
4150721E 593634N ft

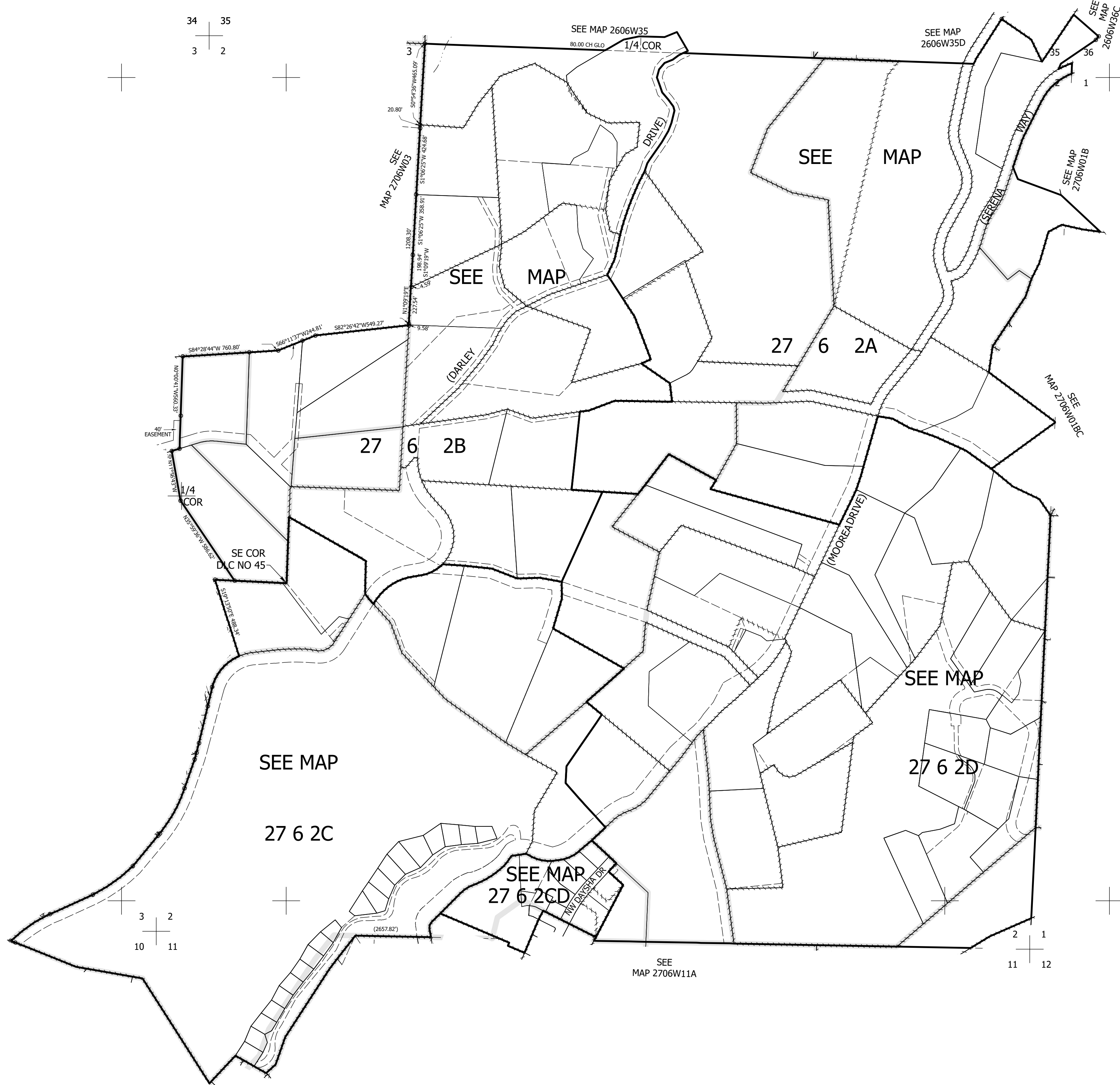
T.27S. R.06W. W.M. DOUGLAS COUNTY

1" = 400'

Date Exported 2025-07-03

270602 & INDEX Roseburg

CANCELLED NOS:
100-3004



270602 & INDEX Roseburg

Lower Right:
123°21'47"W 43°14'26"N
4158571E 586679N ft