

THIS MAP WAS PREPARED FOR ASSESSMENT PURPOSE ONLY.

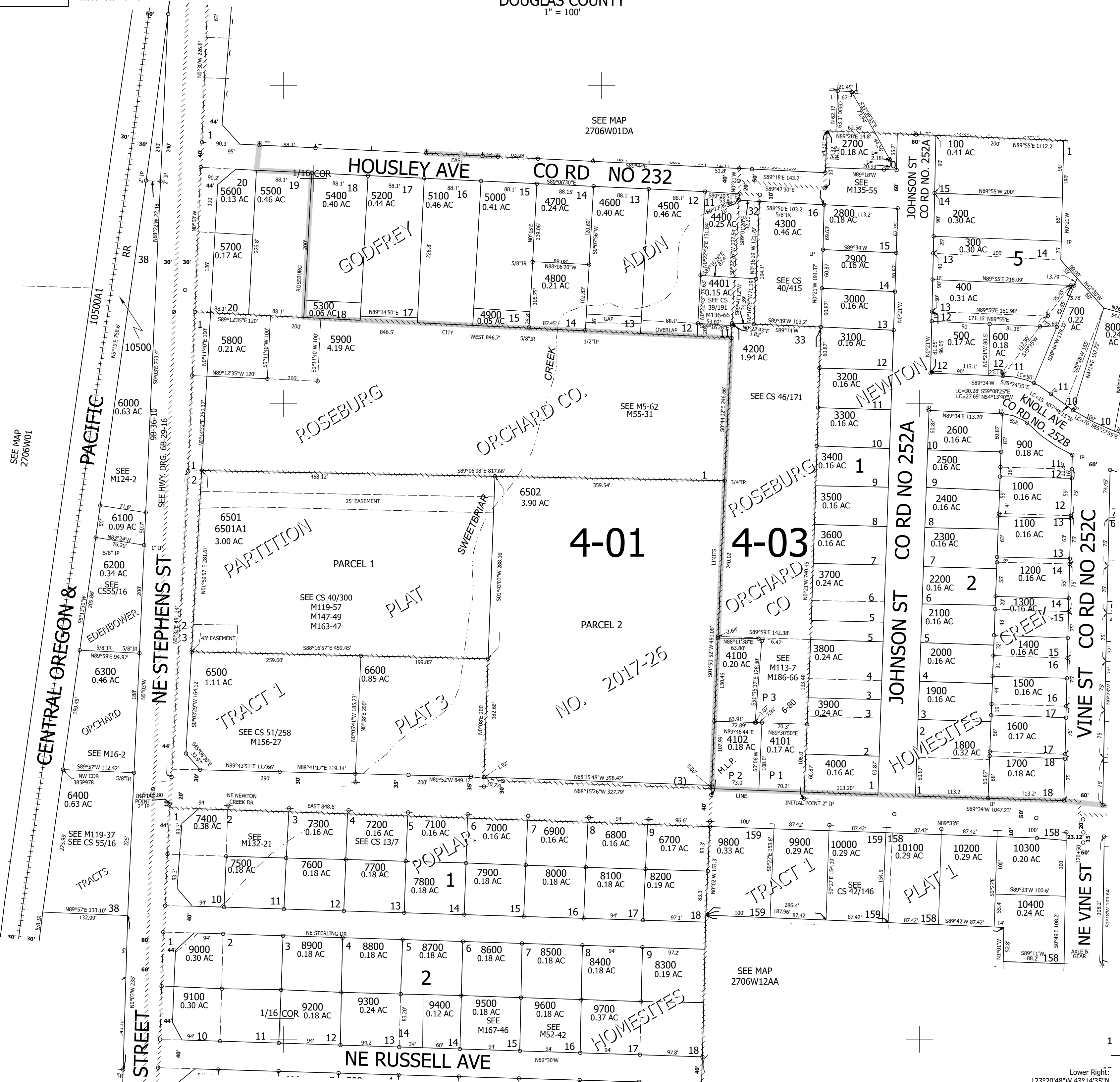
Upper Left:  
123°21'16"W 43°14'52"N  
4160963E 589148N ft

SE1/4 SE1/4 SEC.01 T.27S. R.06W. W.M.  
DOUGLAS COUNTY  
1" = 100'

Date Exported 2026-03-09

270601DD

CANCELLED NOS:



SEE MAP 2706W01

SEE MAP 2706W01DA

1/16 COR

SEE MAP 2705W06CC

270601DD  
Roseburg

Lower Right:  
123°20'48"W 43°14'35"N  
4162935E 587409N ft