

THIS MAP WAS PREPARED FOR ASSESSMENT PURPOSE ONLY.

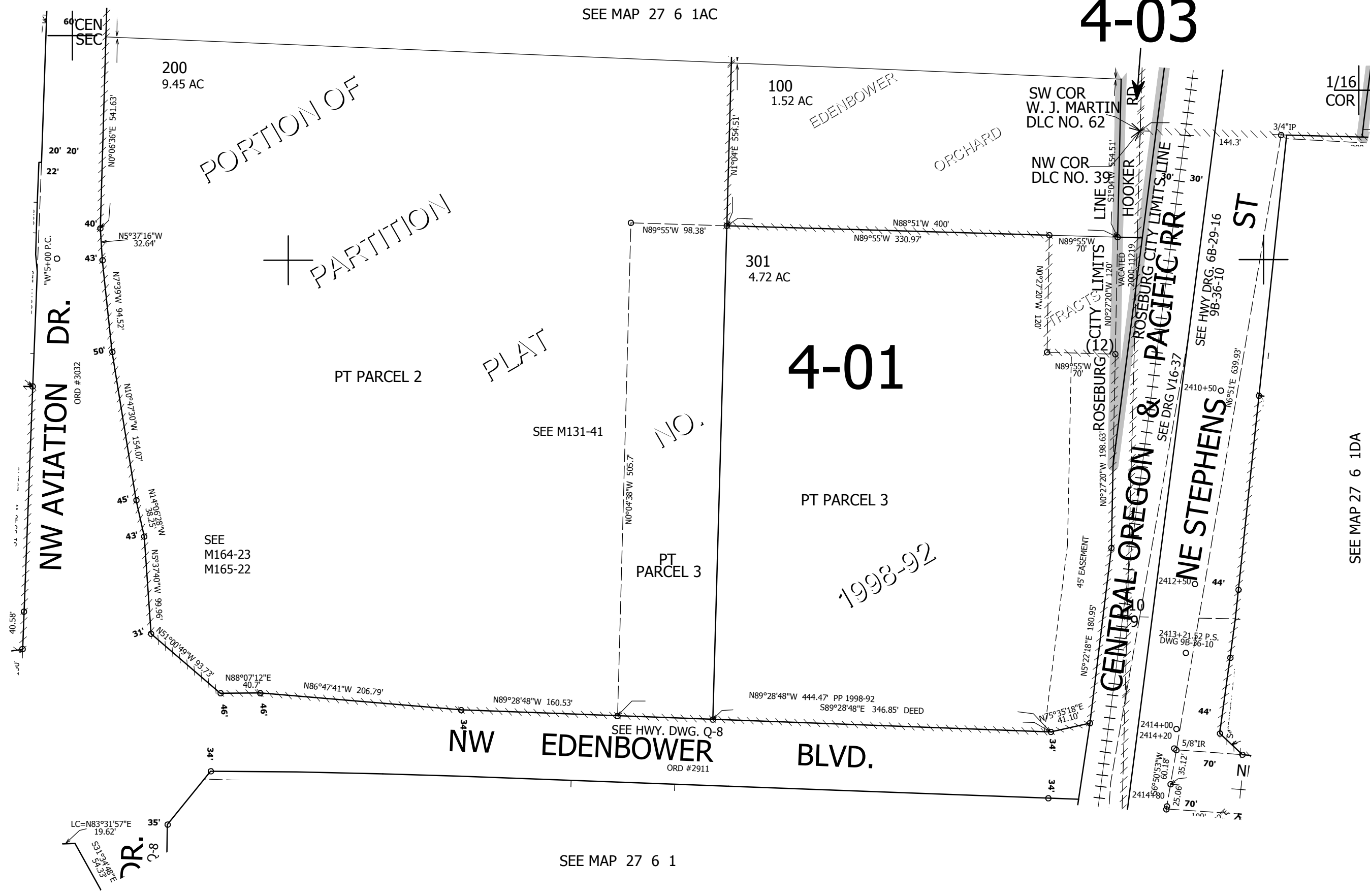
NW1/4 SE1/4 SEC.1 T.27S. R.6W. W.M. DOUGLAS COUNTY

1" = 100'

REVISED ON 2-20-19

27 6 1DB ROSEBURG

SEE MAP 27 6 1CA



SEE MAP 27 6 1AC

4-03

SEE MAP 27 6 1AD

CANCELLED NO'S 300 400

SEE MAP 27 6 1DA

SEE MAP 27 6 1

1/16 COR

1/16 COR

589,000

4,161,500

27 6 1DB ROSEBURG