

THIS MAP WAS PREPARED FOR ASSESSMENT PURPOSE ONLY.

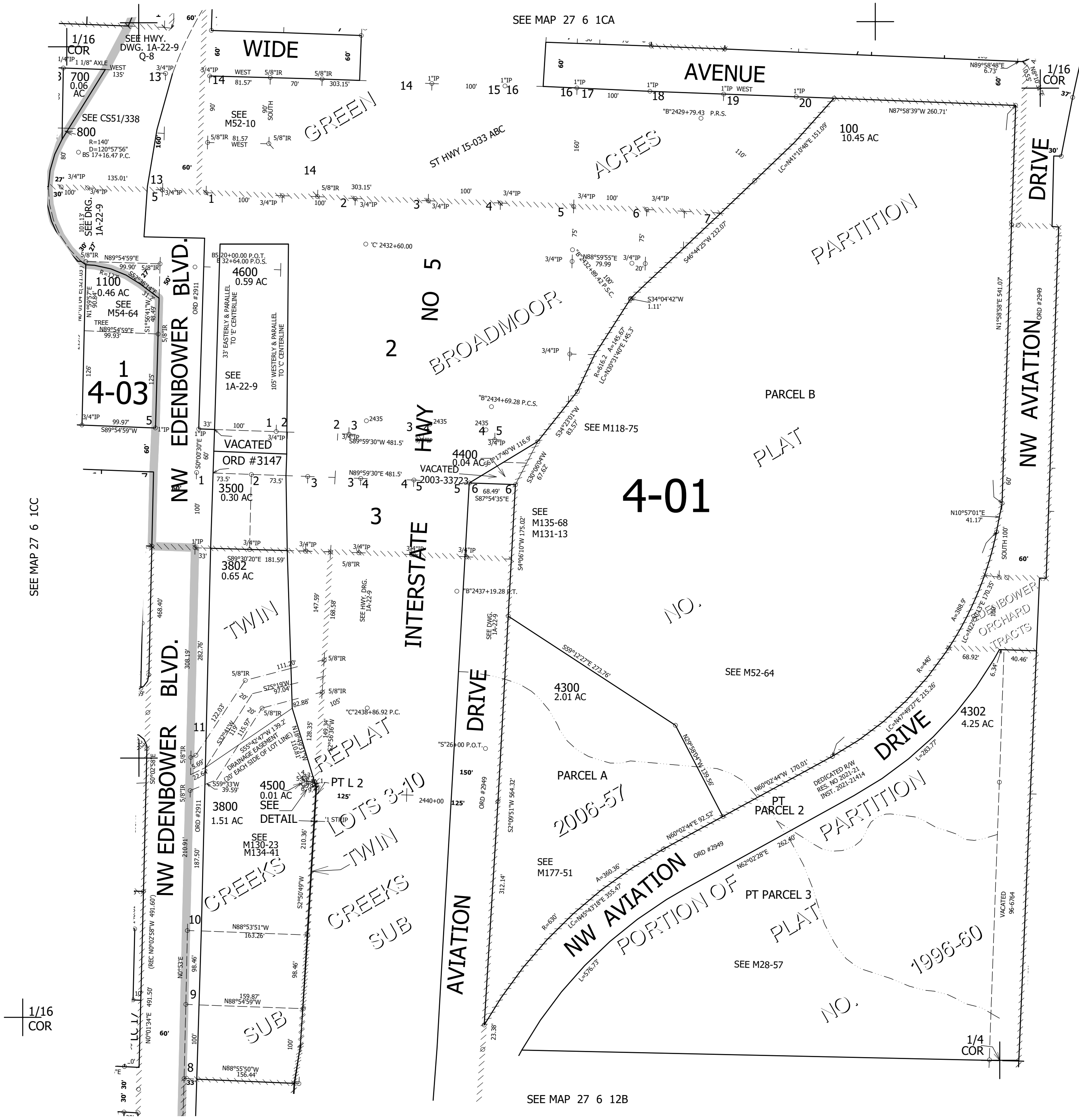
SE1/4 SW1/4 SEC.1 T.27S. R.6W. W.M. DOUGLAS COUNTY

REVISED ON 11-30-21

27 6 1CD ROSEBURG

1" = 100'

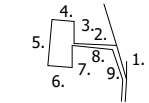
SEE MAP 27 6 1CA



- CANCELLED NO'S
- 1400 101 3702
- 200 300 1000
- 600 500 2001
- 900 1700 4200
- 1300 3601 1200
- 3602 400 3701
- 2600 3801 3901
- 3600 3700 3900
- 3703 3301 3401
- 3302 4401 1500
- 1600 1800 1900
- 2000 2100 2200
- 2300 2400 2500
- 2601 2700 2800
- 2900 3000 3100
- 3200 3300 3400
- 4000 4100 4303
- 3402 3800A1 4301

- PARCEL 4500
- 1. N18°49'31"W 9'
- 2. N87°09'11"W 10.97'
- 3. N2°50'49"E 5.5'
- 4. N87°09'11"W 6'
- 5. S2°50'49"W 12'
- 6. S87°09'11"E 6'
- 7. N2°50'49"E 5.5'
- 8. S87°09'11"E 10.29'
- 9. S18°49'31"E 8.13'

DETAIL 1" = 50'



SEE MAP 27 6 1

588,000

27 6 1CD ROSEBURG

4,160,000

SEE MAP 27 6 1CC

SEE MAP 27 6 12B