

THIS MAP WAS PREPARED FOR ASSESSMENT PURPOSE ONLY.

SW1/4 SW1/4 SEC.1 T.27S. R.6W. W.M. DOUGLAS COUNTY

REVISED ON 7-27-16

27 6 1CC ROSEBURG

1" = 100' SEE MAP 27 6 1CB

1/16 COR

CANCELLED NO'S 200A1 1801 2000 7602 2001 2002 7601 7605 7606 302 303

NOTE: LC - LIMITED COMMON LC 1 - 89000U1 U2 LC 2 - 88000U1 U2 LC 3 - 87000U1 U2 LC 4 - 85000U1 U2 LC 5 - 86000U1 U2 LC 6 - 4800U1 U2 LC 7 - 4300U1 U2 U3 U4 LC 8 - 3700U1 U2 U3 U4 LC 9 - 3200U1 U2 U3 U4 LC 10 - 2700U1 U2 U3 U4 LC 11 - 2200U1 U2 U3 U4 LC 17 - 7500U1 U2 LC 18 - 6900U1 U2 U3 U4 LC 19 - 6400U1 U2 U3 U4 LC 20 - 5900U1 U2 U3 U4 LC 21 - 5100U1 U2

GARDEN HILLS NO. 1

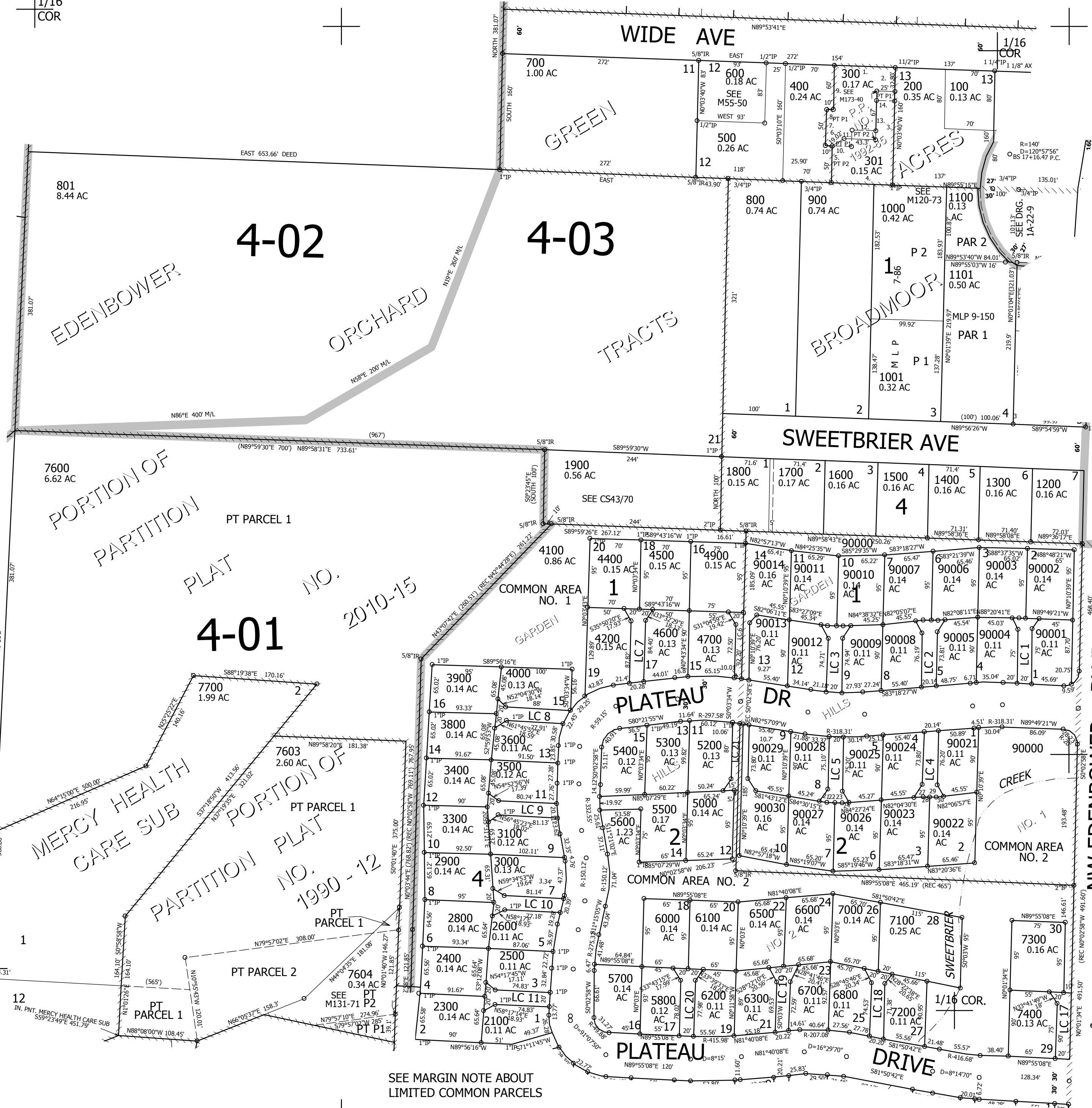
- 1. S36°43'18"W 16.54' 2. S31°28'57"E 18.93' 3. S83°27'09"E 10' 4. S89°49'21"E 10' 5. S89°49'21"E 10' 6. N84°38'32"E 10' 7. S32°07'12"W 18.94' 8. S35°53'42"E 16.81' 9. N82°05'07"E 10' 10. S89°49'21"E 10' 11. S89°49'21"E 10' 12. N82°08'11"E 10' 13. S31°17'38"W 19.16' 14. S34°12'15"E 17.67' 15. N88°20'41"E 10' 16. S89°49'21"E 10' 17. S89°49'21"E 10' 18. N33°52'04"E 18.03' 19. S30°55'29"E 19.16' 20. N35°29'28"E 17.23' 21. S84°30'15"E 10' 22. S89°49'21"E 10' 23. S89°49'21"E 10' 24. N84°27'24"E 10' 25. N35°13'22"W 17.18' 26. N31°16'47"E 19.16' 27. N82°04'30"E 10' 28. S89°49'21"E 10' 29. S89°49'21"E 10' 30. N82°06'57"E 10' 31. N35°52'30"W 16.63'

588,000

PP 1992-85

- 1. N89°54'08"E 84.15' 2. S0°03'40"E 45.8' 3. S0°03'40"E 113.85' 4. S89°47'04"W 83.82' 5. N0°09'50"W 49.84' 6. S89°43'11"W 9.99' 7. N0°11'02"W 49.99' 8. S89°55'06"E 10.02' 9. N0°13'45"W 60.04' 10. N89°47'04"E 26.17' 11. N0°03'40"W 22.65' 12. N69°47'04"E 32.79' 13. N0°03'40"W 41.35' 14. N89°47'04"E 25'

27 6 1CC ROSEBURG



SEE MARGIN NOTE ABOUT LIMITED COMMON PARCELS

SEE MAP 27 6 12BB

4,159,000