

THIS MAP WAS PREPARED FOR ASSESSMENT PURPOSE ONLY.

NW1/4 SW1/4 SEC.1 T.27S. R.6W. W.M. DOUGLAS COUNTY

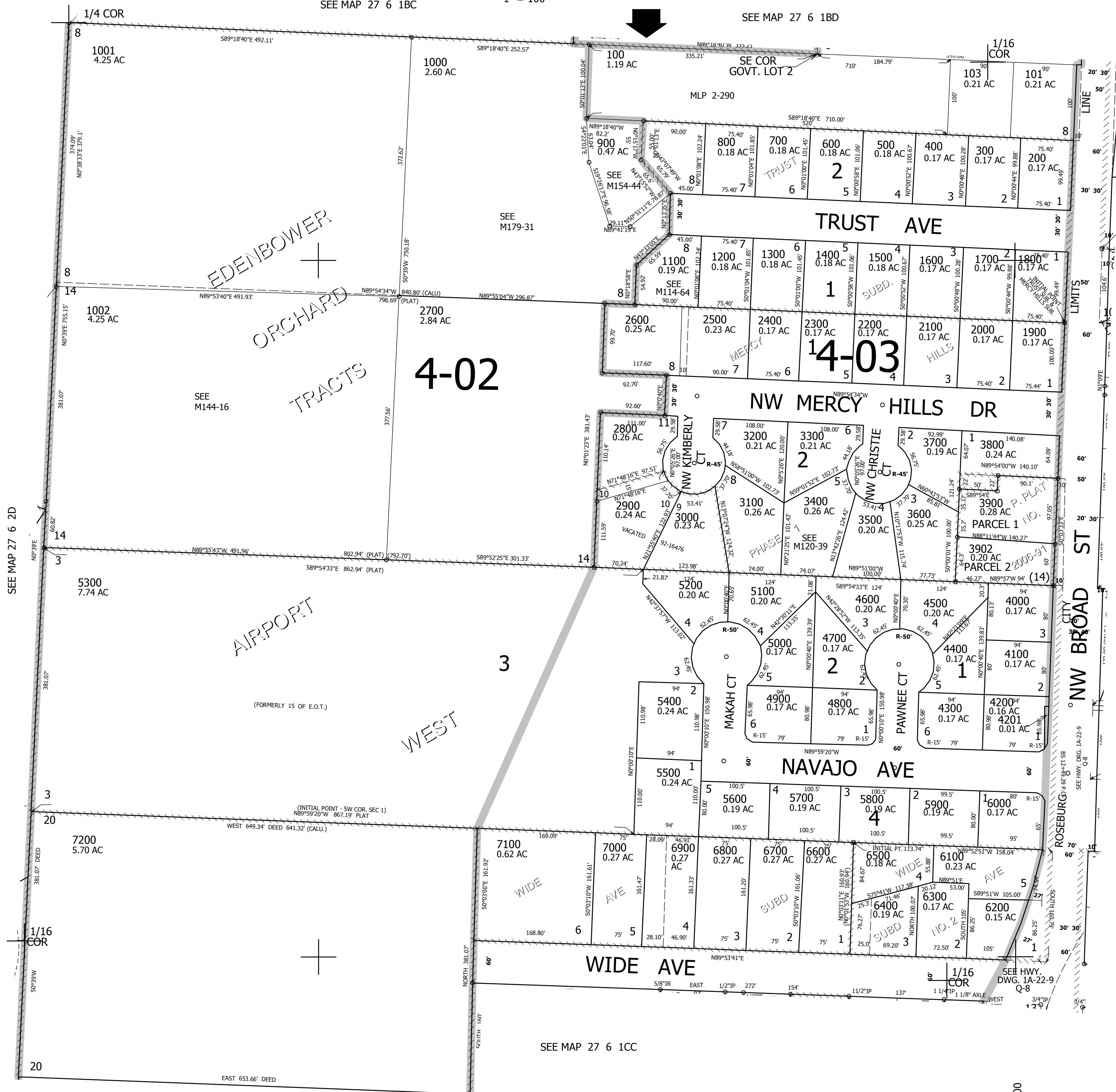
REVISED ON 9-12-16

27 6 1CB

SEE MAP 27 6 1BC

1" = 100'

SEE MAP 27 6 1BD



CANCELLED NO'S
2601 2901 3901
6101 102 2701
1003

SEE MAP 27 6 1CA

589,000

SEE MAP 27 6 1CC

4,159,000

27 6 1CB