

THIS MAP WAS PREPARED FOR ASSESSMENT PURPOSE ONLY.

Upper Left:
123°21'47"W 43°15'4"N
4158708E 590479N ft

NE1/4 SW1/4 SEC.01 T.27S. R.06W. W.M.
DOUGLAS COUNTY
1"=100'

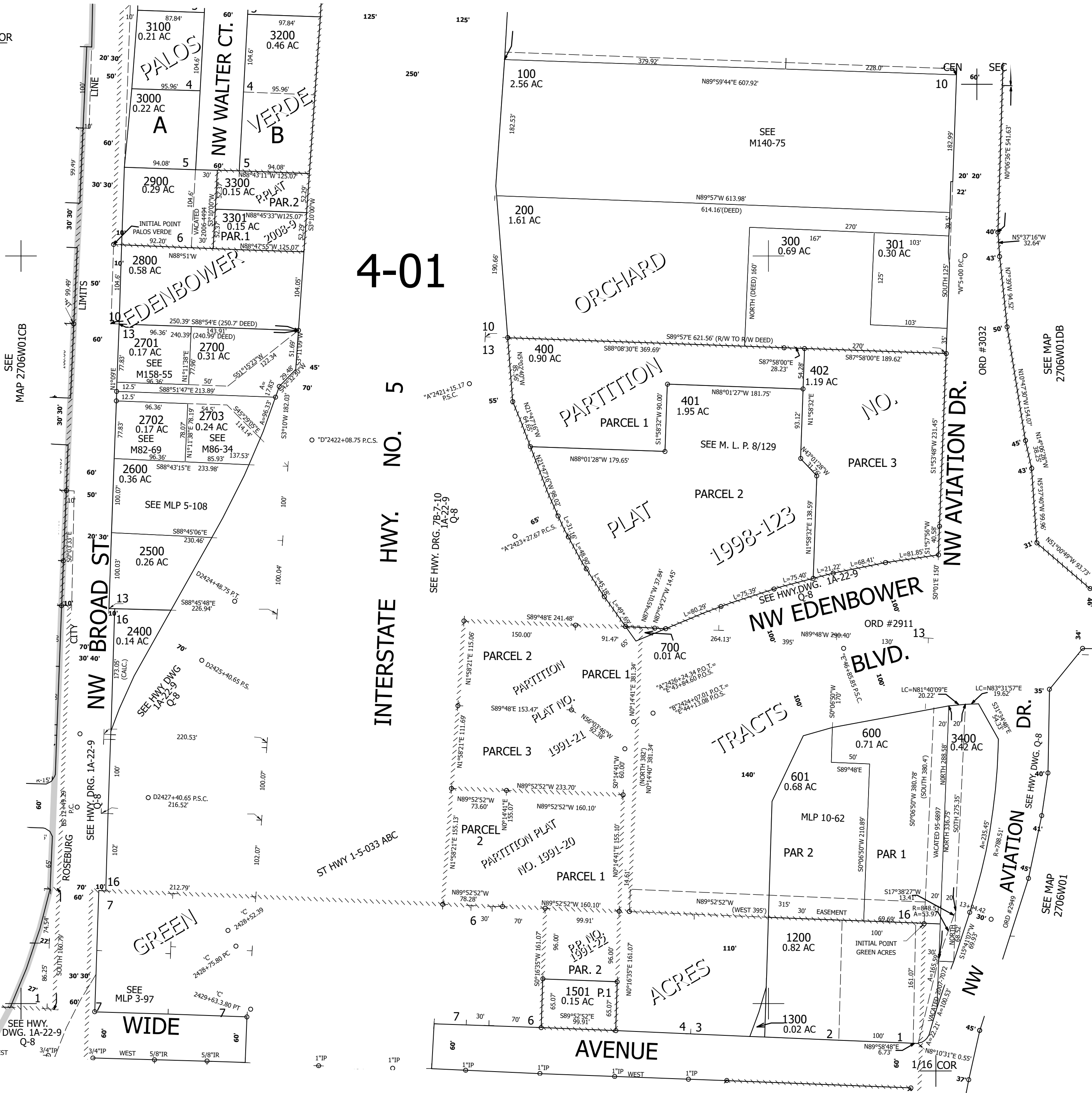
Date Exported 2025-02-18

270601CA
Roseburg

CANCELLED NOS:
900 1800 702
1000 2000 800
1700 2100 1500
1900 2200 2300
1600 602 1400
701 801 2801
403 404 405
406 501 500
2704 2705 1100

SEE MAP
2706W01BD

1/16 COR



4-01

INTERSTATE HWY. NO. 5

ST HWY 1-5-033 ABC

SEE MAP
2706W01CD

1/16 COR

270601CA
Roseburg

Lower Right:
123°21'19"W 43°14'48"N
4160683E 588740N ft