

THIS MAP WAS PREPARED FOR ASSESSMENT PURPOSE ONLY.

SEE MAP 27 6 1B

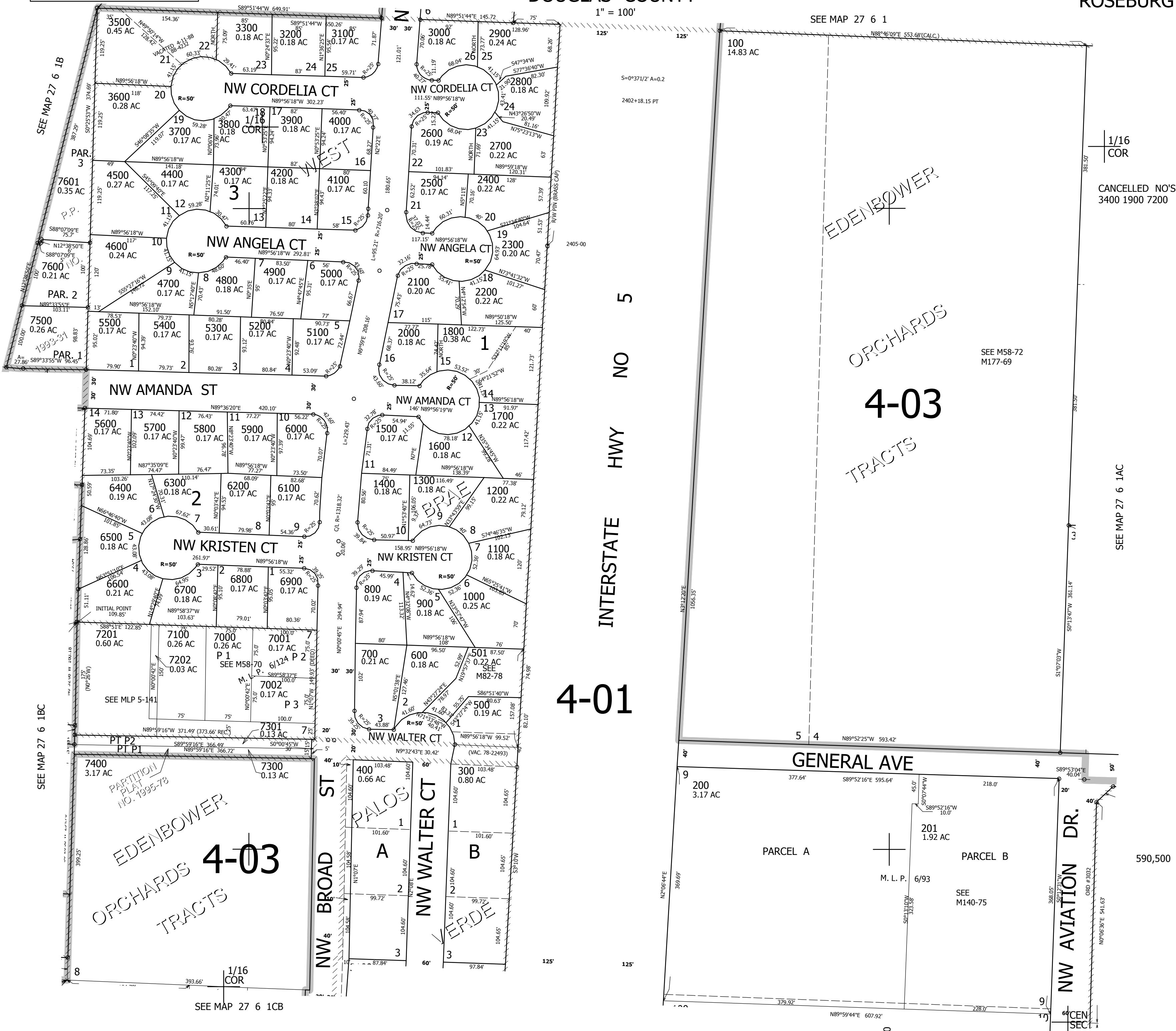
SE1/4 NW1/4 SEC.1 T.27S. R.6W. W.M. DOUGLAS COUNTY

REVISED ON 12-13-17

27 6 1BD ROSEBURG

1" = 100'

SEE MAP 27 6 1



SEE MAP 27 6 1B

SEE MAP 27 6 1B

EDENBOWER ORCHARDS TRACTS 4-03

4-03

1/16 COR

SEE MAP 27 6 1C

INTERSTATE HWY NO 5

4-01

SEE MAP 27 6 1A

EDENBOWER

ORCHARDS

4-03

TRACTS

GENERAL AVE

NW AVIATION DR.

1/16 COR

CANCELLED NO'S 3400 1900 7200

SEE M58-72 M177-69

SEE MAP 27 6 1A

590,500

27 6 1BD ROSEBURG

4,160,000