

SW1/4 NW1/4 SEC.1 T.27S. R.6W. W.M.  
DOUGLAS COUNTY

REVISED ON  
9-12-16

27 6 1BC  
ROSEBURG

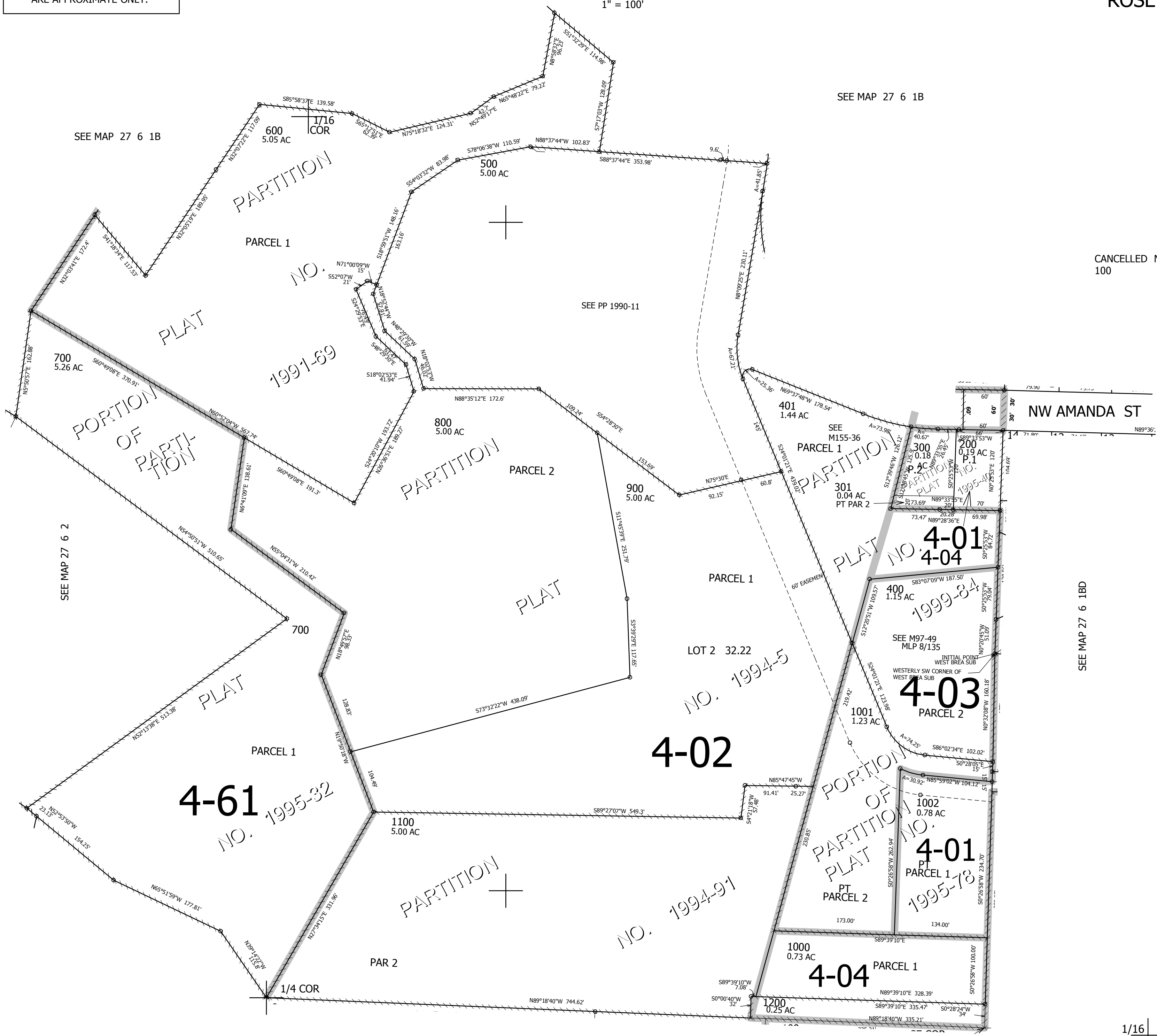
LINES PROTRACTED HEREON  
ARE APPROXIMATE ONLY.

1" = 100'

SEE MAP 27 6 1B

1/16  
COR

CANCELLED NO'S  
100



SEE MAP 27 6 1B

SEE MAP 27 6 2

SEE MAP 27 6 1BD

SEE MAP 27 6 1CB

1/16  
COR

27 6 1BC  
ROSEBURG

4,158,000