

THIS MAP WAS PREPARED FOR ASSESSMENT PURPOSE ONLY.

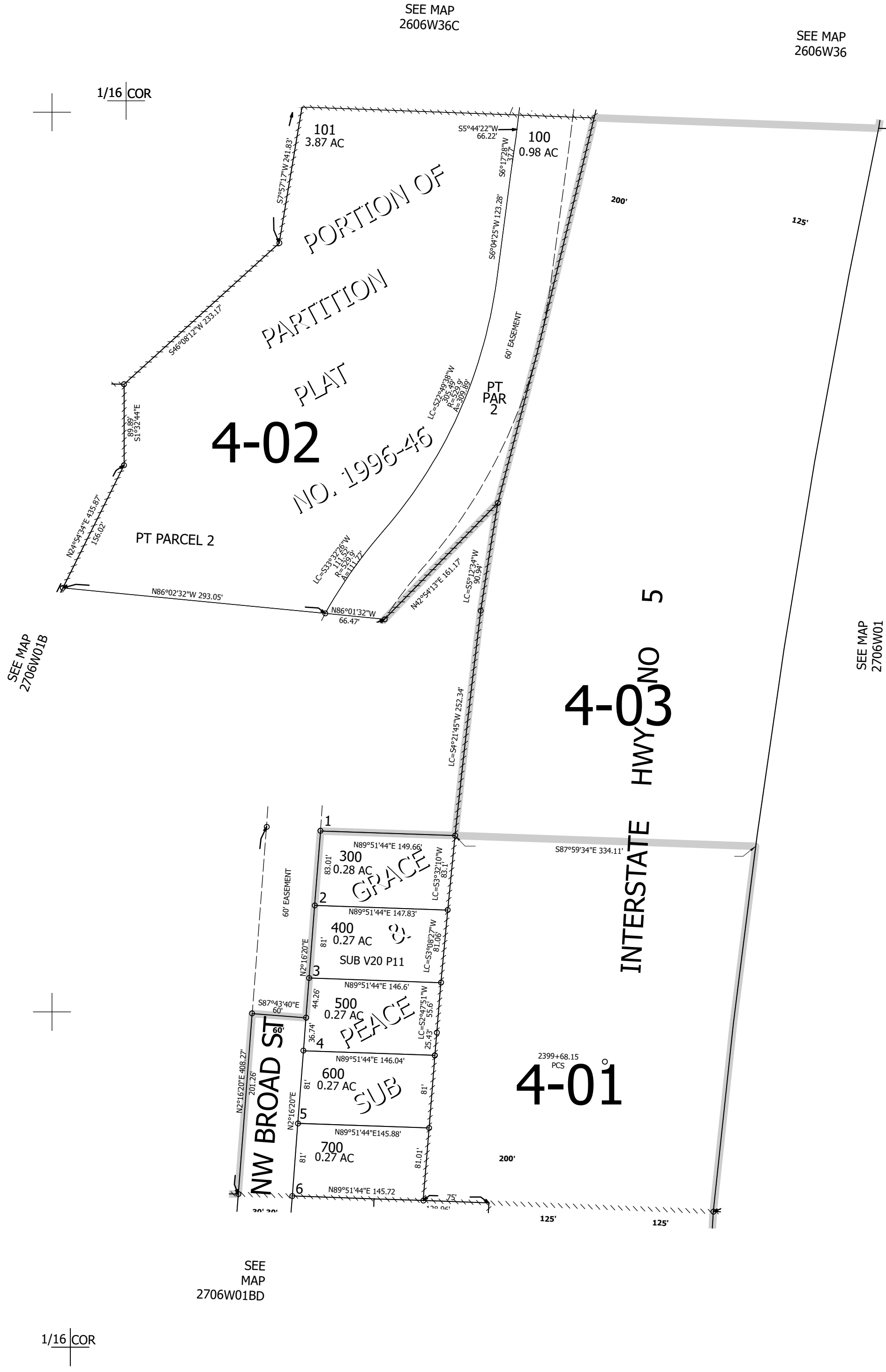
Upper Left:
123°21'51"W 43°15'32"N
4158472E 593275N ft

NE1/4 NW1/4 SEC.01 T.27S. R.06W. W.M.
DOUGLAS COUNTY
1" = 100'

Date Exported 2025-07-07

270601BA
Roseburg

CANCELLED NOS:
200



1/16 COR

1/4 COR

SEE MAP
2706W01B

SEE MAP
2706W01

SEE
MAP
2706W01BD

1/16 COR

1/16 COR

Lower Right:
123°21'24"W 43°15'15"N
4160447E 591495N ft

270601BA
Roseburg