

THIS MAP WAS PREPARED FOR ASSESSMENT PURPOSE ONLY.

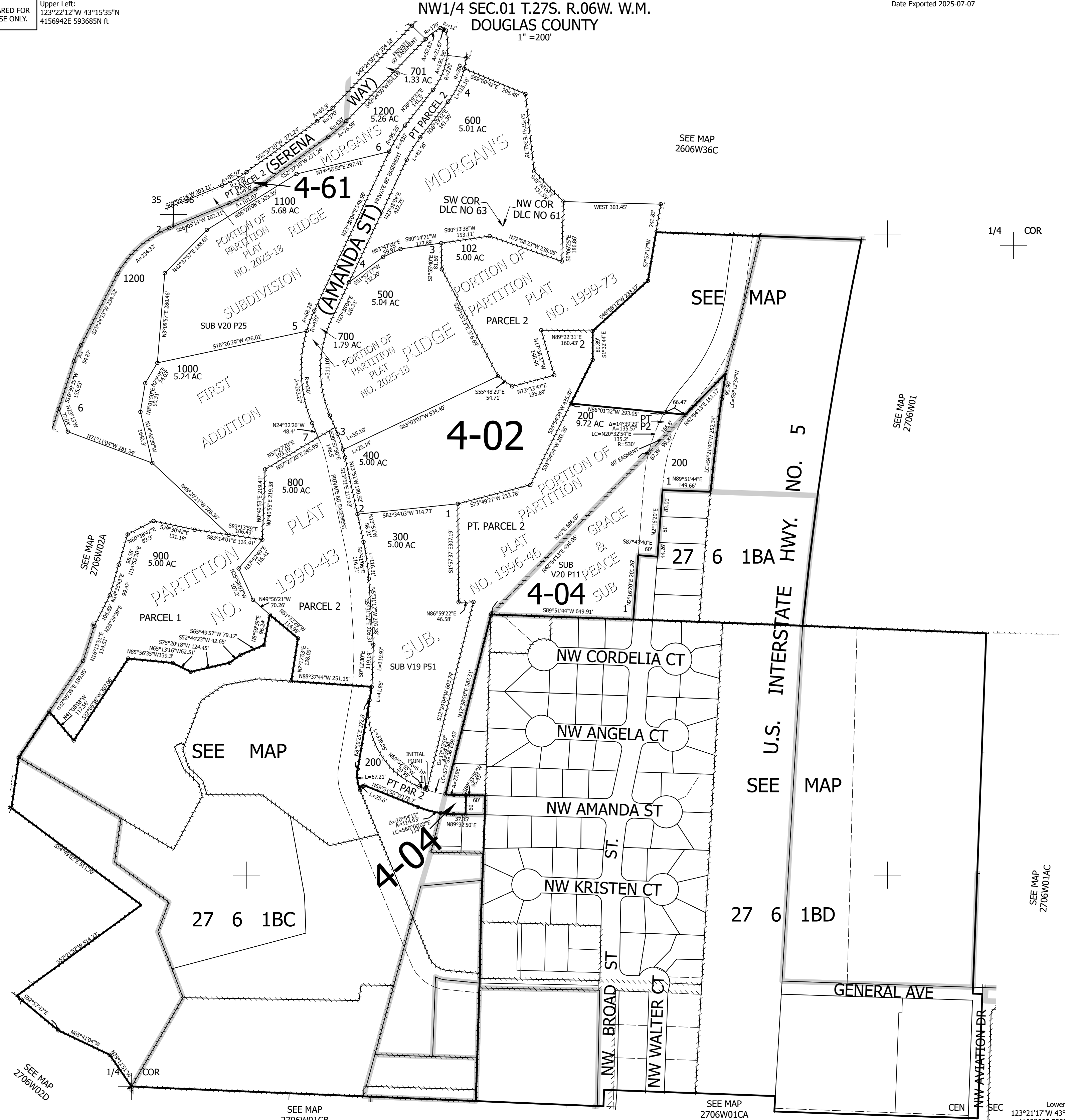
Upper Left:
123°22'12"W 43°15'35"N
4156942E 593685N ft

NW1/4 SEC.01 T.27S. R.06W. W.M.
DOUGLAS COUNTY
1" = 200'

Date Exported 2025-07-07

270601B
& INDEX
Roseburg

CANCELLED NOS:
101 100 702
201 202



SEE MAP
2706W02D

SEE MAP
2706W01CB

SEE MAP
2706W01CA

SEE MAP
2706W01AC

Lower Right:
123°21'17"W 43°15'2"N
4160866E 590207N ft

270601B
& INDEX
Roseburg