

THIS MAP WAS PREPARED FOR ASSESSMENT PURPOSE ONLY.

Upper Left:
123°21'31"W 43°15'18"N
4159945E 591834N ft

SW1/4 NE1/4 SEC.01 T.27S. R.06W. W.M.
DOUGLAS COUNTY
1" = 100'

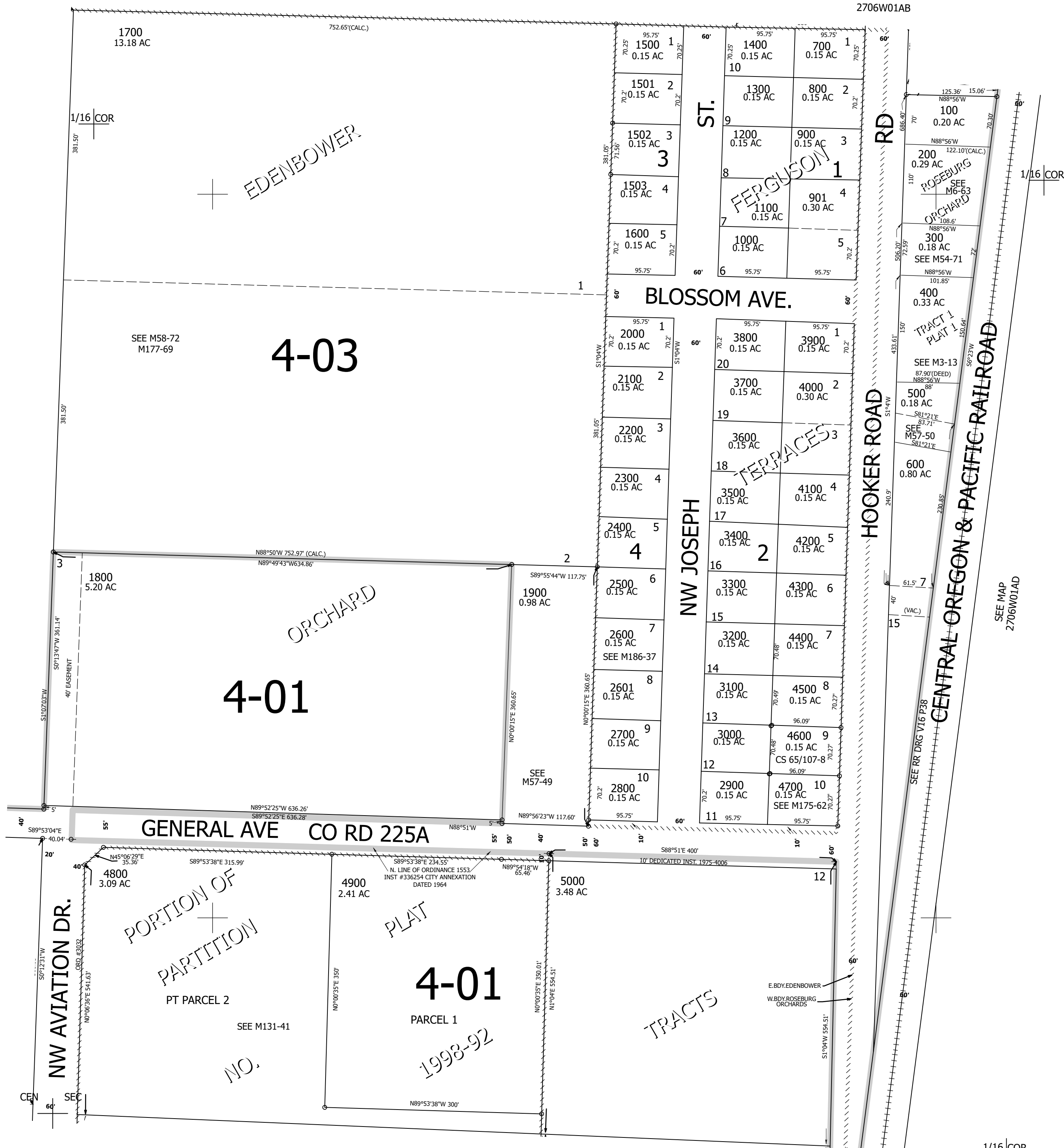
Date Exported 2026-05-04

270601AC
Roseburg

CANCELLED NOS:

SEE MAP
2706W01

SEE MAP
2706W01AB



SEE MAP
2706W01BD

SEE MAP
2706W01AD

SEE MAP
2706W01DB

1/16 COR

270601AC
Roseburg

Lower Right:
123°21'3"W 43°15'1"N
4161917E 590096N ft