

THIS MAP WAS PREPARED FOR ASSESSMENT PURPOSE ONLY.

Upper Left:  
123°21'23"W 43°15'31"N  
4160534E 593156N ft

NW1/4 NE1/4 SEC.01 T.27S. R.06W. W.M.  
DOUGLAS COUNTY  
1" = 100'

Date Exported 2023-08-21

270601AB  
Roseburg

CANCELLED NOS:  
1600 1800

SEE MAP  
2606W36DC

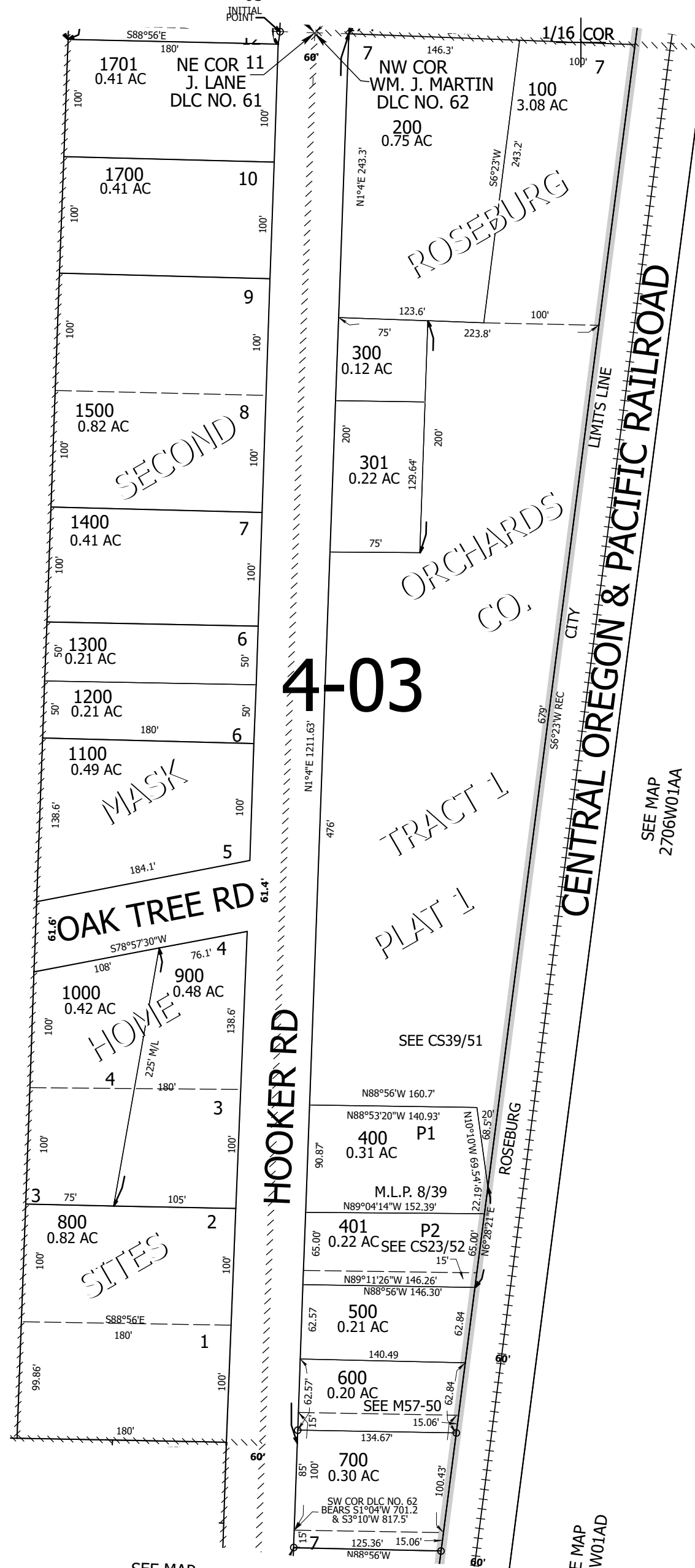
SEE MAP  
2606W36DD

SEE MAP  
2706W01

SEE MAP  
2706W01AA

SEE MAP  
2706W01AC

SEE MAP  
2706W01AD



1/16 COR

270601AB  
Roseburg

Lower Right:  
123°20'56"W 43°15'15"N  
4162497E 591417N ft