

THIS MAP WAS PREPARED FOR ASSESSMENT PURPOSE ONLY.

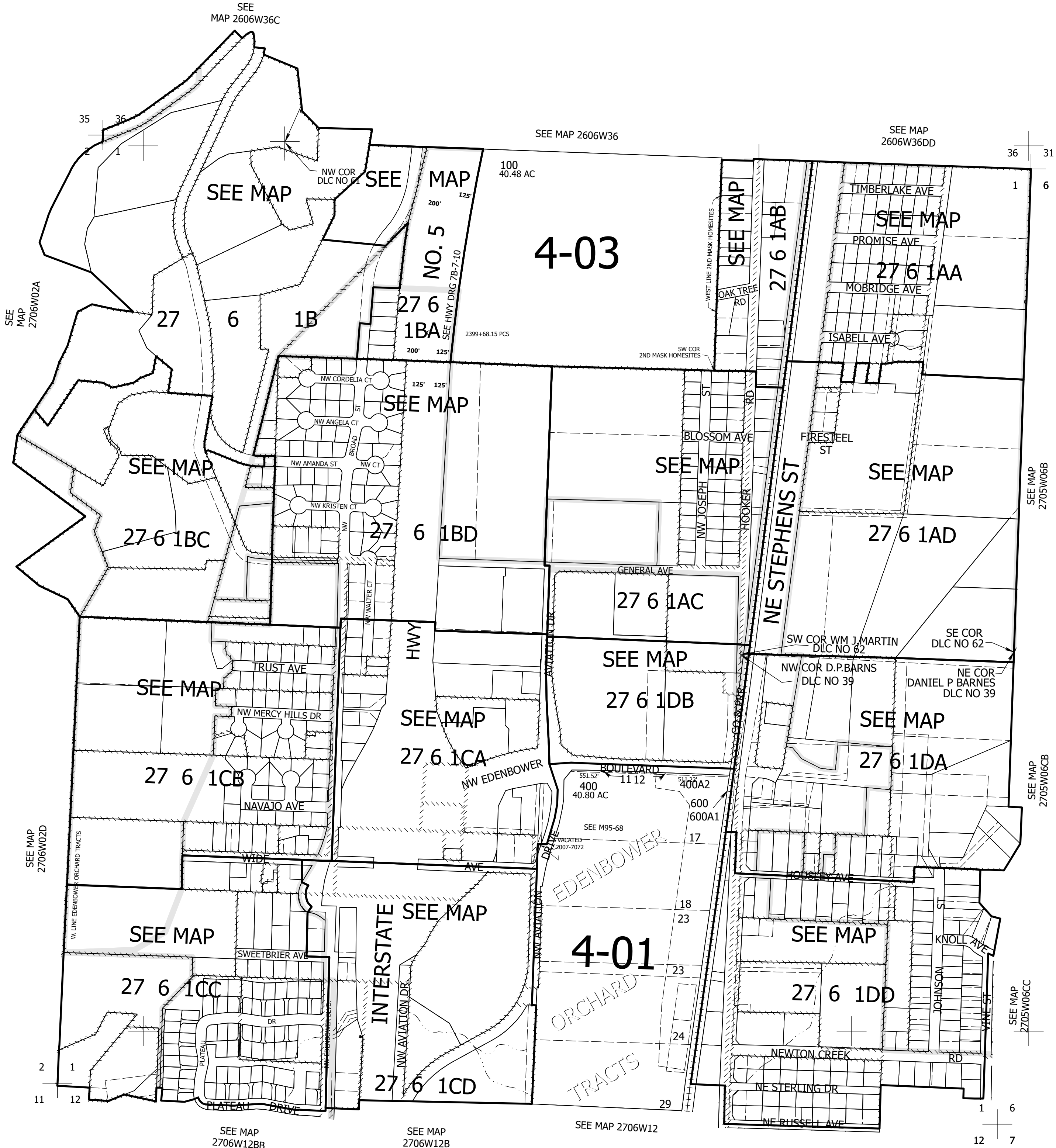
Upper Left:
123°22'22"W 43°15'38"N
4156211E 594021N ft

SEC.01 T.27S. R.06W. W.M.
DOUGLAS COUNTY
1" = 400'

Date Exported 2025-07-07

270601
& INDEX
Roseburg

CANCELLED NOS:
209 201 202
210 203 204
207 208 213
214 215 216
401 400A1 500
500M1 300 218
200 205 206
211 212 217



270601
& INDEX
Roseburg

Lower Right:
123°20'33"W 43°14'32"N
4164061E 587065N ft