

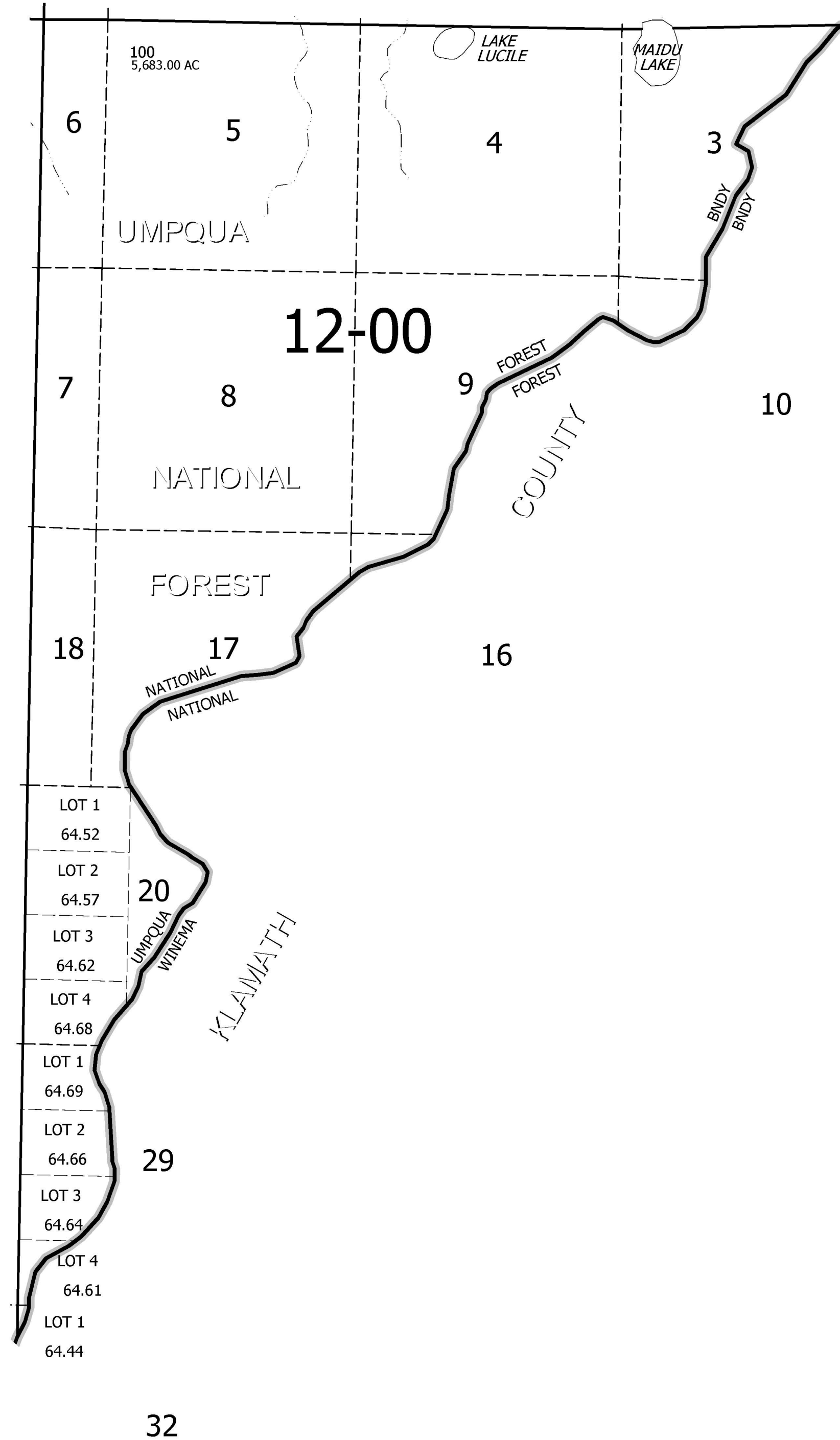
THIS MAP WAS PREPARED FOR  
ASSESSMENT PURPOSE ONLY.

T.27S. R.6 1/2E. W.M.  
DOUGLAS COUNTY  
1" = 2000'

REVISED ON

27 6VE 00

SEE MAP 26 6VE 00



SEE MAP 27 6E 00

27 6VE 00