

THIS MAP WAS PREPARED FOR ASSESSMENT PURPOSE ONLY.

Upper Left:
122°10'55"W 43°15'36"N
4473243E 585140N ft

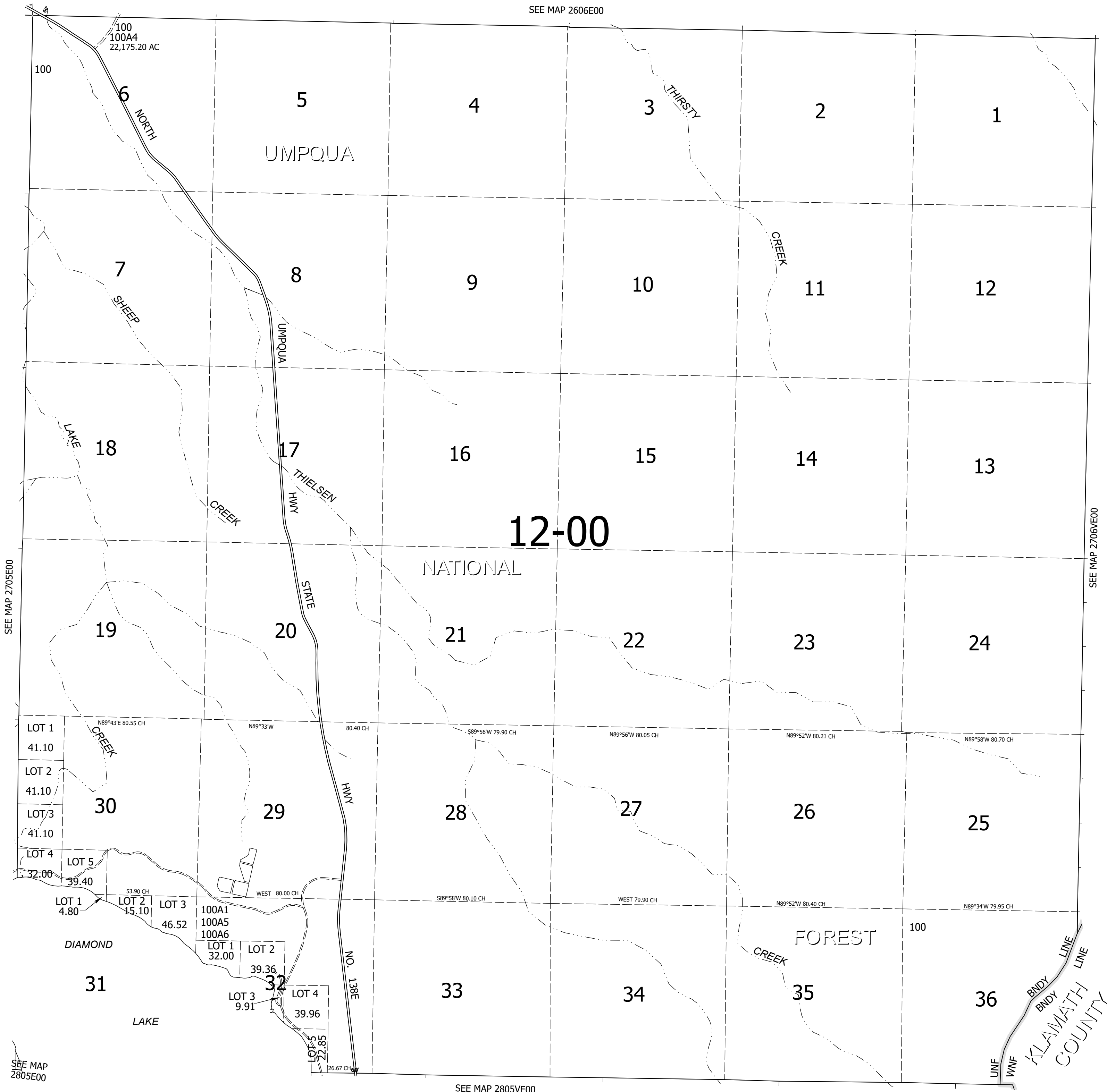
T.27S. R.06E. W.M.
DOUGLAS COUNTY
1" = 2,000'

Date Exported 2023-07-20

2706E00

CANCELLED NOS:
100A2 100A3

SEE MAP 2606E00



SEE MAP 2705E00

SEE MAP 2706VE00

SEE MAP 2805E00

SEE MAP 2805VE00

2706E00

Lower Right:
122°1'57"W 43°10'N
4512489E 550363N ft