

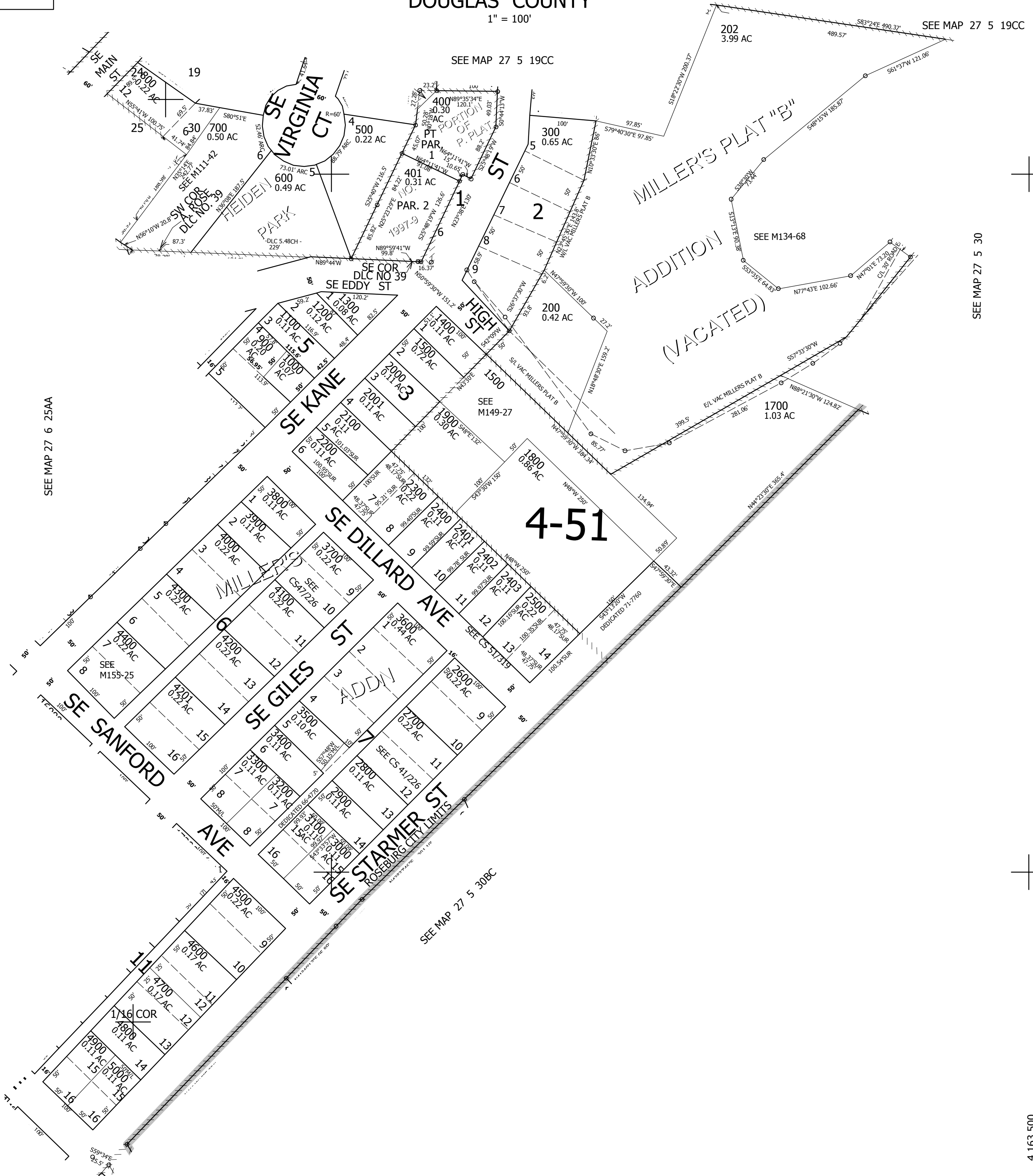
THIS MAP WAS PREPARED FOR ASSESSMENT PURPOSE ONLY.

NW1/4 NW1/4 SEC.30 T.27S. R.5W. W.M.  
DOUGLAS COUNTY

REVISED ON  
1-21-20

27 5 30BB  
ROSEBURG

1" = 100'



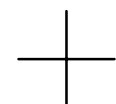
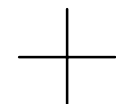
SEE MAP 27 6 25AA

SEE MAP 27 5 19CC

SEE MAP 27 5 19CC

SEE MAP 27 5 30

SEE MAP 27 5 30BC



CANCELLED NO'S  
402 1600 100  
201

570,500

4,163,500

27 5 30BB  
ROSEBURG