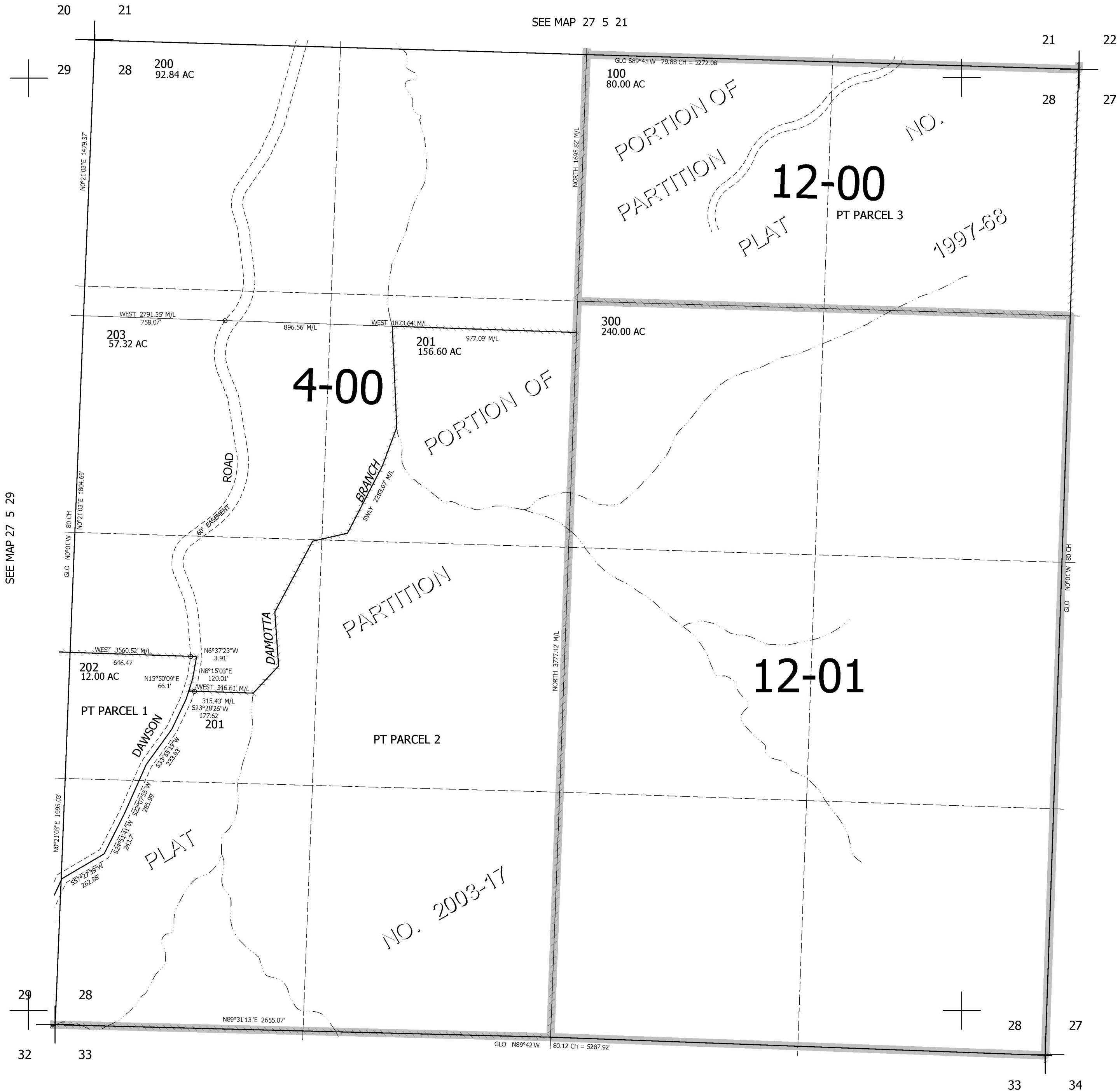


THIS MAP WAS PREPARED FOR ASSESSMENT PURPOSE ONLY.

SEC.28 T.27S. R.5W. W.M.  
DOUGLAS COUNTY  
1" = 400'

REVISED ON  
4-9-09

27 5 28



CANCELLED NO'S  
204 205

SEE MAP 27 5 29

SEE MAP 27 5 27

SEE MAP 27 5 33

566,000

4,178,000

27 5 28