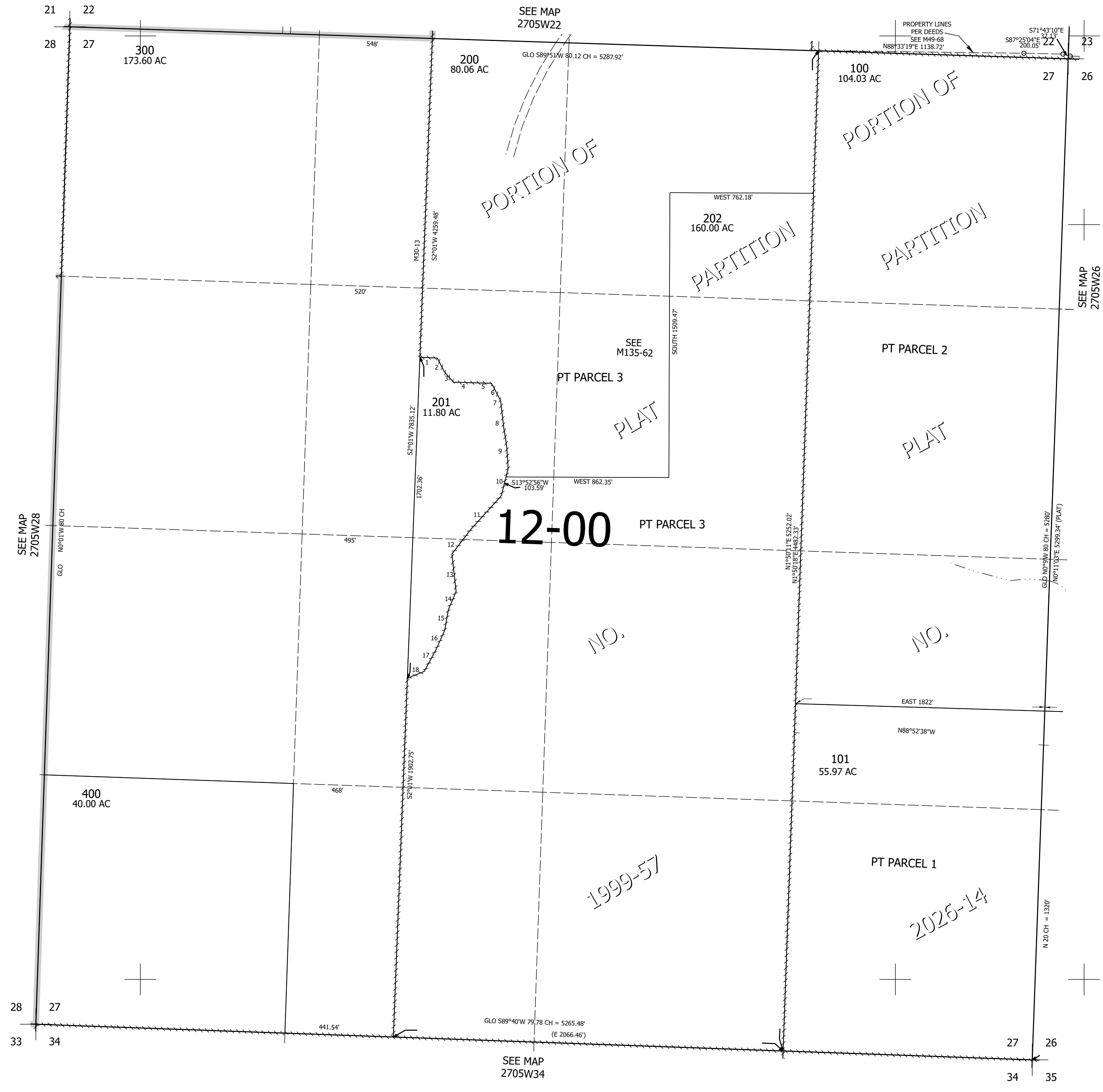


THIS MAP WAS PREPARED FOR ASSESSMENT PURPOSE ONLY.

Upper Left:
123°17'26"W 43°12'5"N
4177377E 571701N ft

SEC.27 T.27S. R.05W. W.M.
DOUGLAS COUNTY
1" = 400'

- PARCEL 201
1. S87°34'08"E 92.1'
 2. S27°20'15"E 81.42'
 3. S41°30'32"E 73.9'
 4. S88°43'05"E 128.74'
 5. S88°26'44"E 73.08'
 6. S27°44'45"E 103.43'
 7. S6°55'22"E 141.36'
 8. S8°56'40"E 103.11'
 9. S4°03'46"E 117.72'
 10. S13°52'56"W 149.76'
 11. S43°05'21"W 239.86'
 12. S37°16'06"W 164.19'
 13. S6°34'44"E 200.21'
 14. S22°48'25"W 104.19'
 15. S9°57'33"W 110.91'
 16. S23°58'W 111'
 17. S28°02'06"W 132.67'
 18. S67°32'59"W 96.82'



Lower Right:
123°15'40"W 43°11'N
4185022E 564927N ft