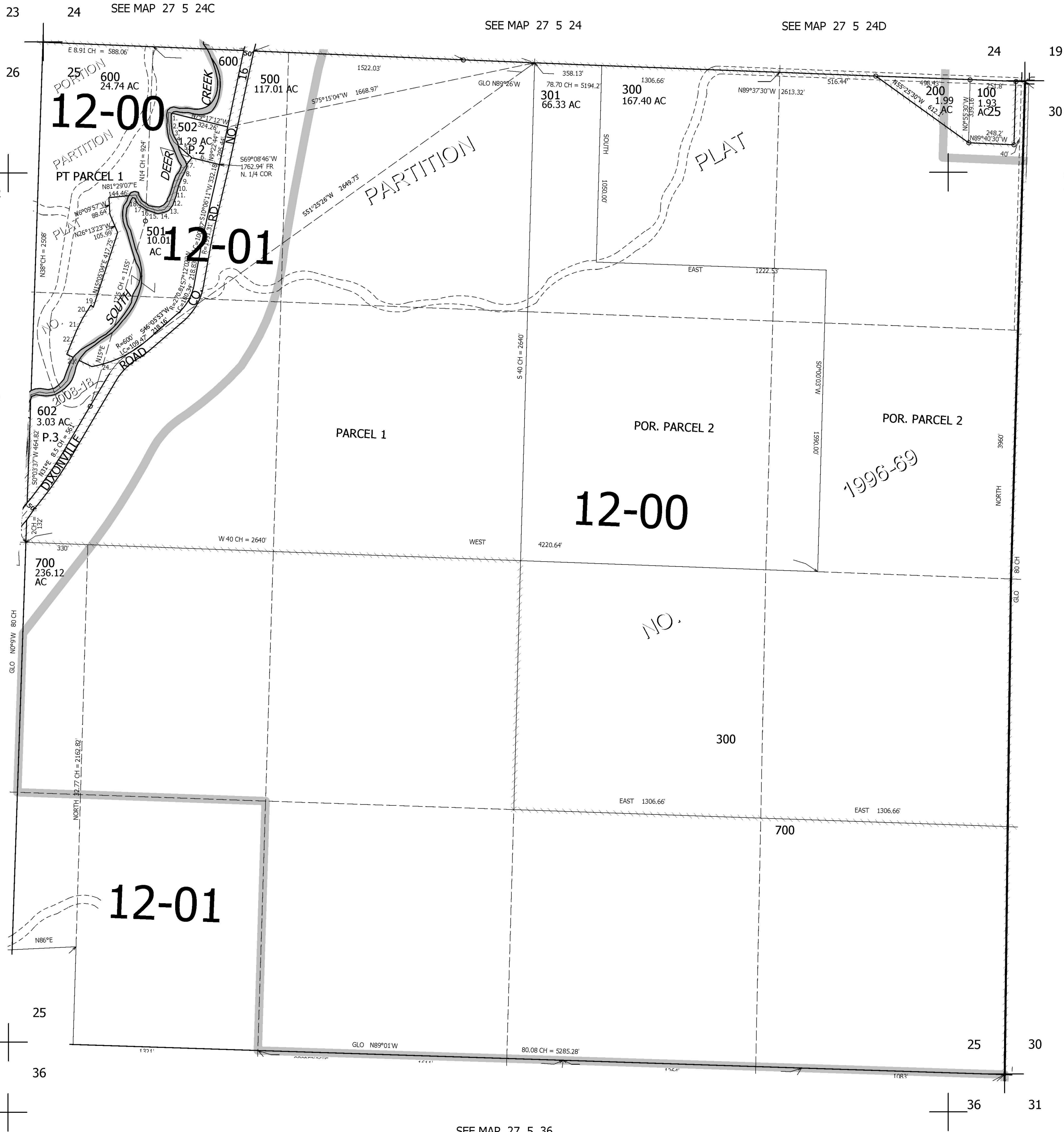


THIS MAP WAS PREPARED FOR ASSESSMENT PURPOSE ONLY.

SEC.25 T.27S. R.5W. W.M.
DOUGLAS COUNTY
1" = 400'

REVISED ON
2-18-09

27 5 25



12-01

CANCELLED NO'S
400 503 601

TAXLOTS 501 & 502

1. S0°12'48"E 27.42'
 2. S8°48'31"E 47.27'
 3. S7°53'53"E 40.48'
 4. S28°56'43"E 44.46'
 5. S51°20'25"E 129.8'
 6. S79°06'09"E 152.07'
 7. N34°56'05"E 60.88'
 8. N29°00'28"E 45.61'
 9. N20°22'52"E 38.01'
 10. N17°12'49"E 41.4'
 11. N14°02'08"E 49.23'
 12. N19°26'32"E 43.46'
 13. N36°29'17"E 35.57'
 14. N75°36'24"E 34.82'
 15. S77°02'00"E 35.44'
 16. S73°52'49"E 35.05'
 17. S52°38'43"E 41.46'
 18. S31°23'31"E 40.33'
 19. S54°13'54"E 16.23'
 20. N29°08'40"E 82.68'
 21. N23°57'44"E 72.08'
 22. N19°08'23"E 136.59'
 23. N66°53'43"W 147.93'
 24. LC=S66°52'45"W 214.84'
- R=600'

SEE MAP 27 5 26

SEE MAP 27 4 30

SEE MAP 27 5 36

565,000

27 5 25

4,194,000